

Crawford County Recorder
Denise Meeves
Fee Book 2010-1907

INDEXED 30
FOLLOW UP
PROOFED
SCANNED

09/17/2010 @ 11:13AM
PLC PLAT CORNER CER
Book: Page: # Pages: 1
Total Fees: \$9.00

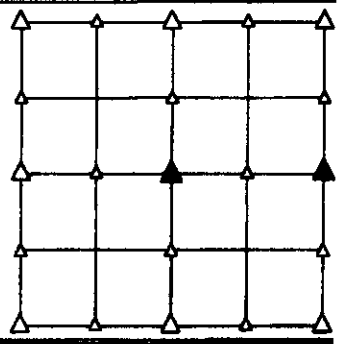
PREPARED BY - TERENCE E. CRAWFORD - SUNDQUIST ENGINEERING - 120 S. MAIN, DENISON, IOWA 51442 - PHONE (712) 263-8118

UNITED STATES PUBLIC LAND SURVEY CORNER CERTIFICATE OF

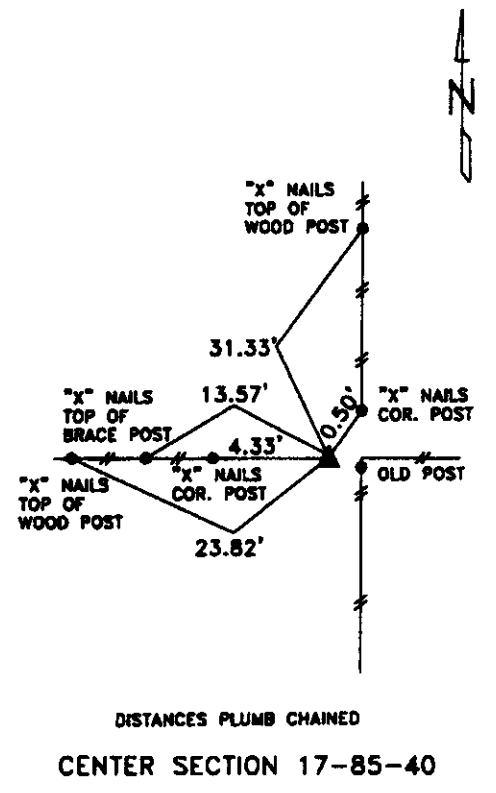
LAND SURVEY MONUMENT SITUATED IN SECTION 17, T 85 N, R 40 W OF
THE 5TH P.M., CRAWFORD COUNTY, IOWA.
PREVIOUSLY RECORDED IN BOOK , PAGE , OTHER

MONUMENT DESCRIPTION AND REMARKS

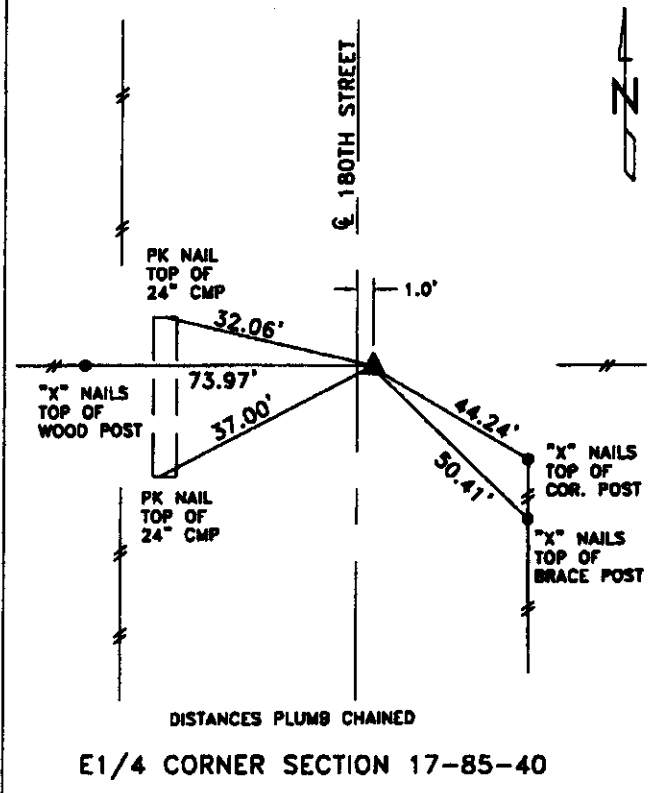
CENTER - SET 5/8" DIA. X 18" IRON PIN W/YELLOW CAP #8893
FLUSH, SET FROM LOCAL EVIDENCE & ON LINE BETWEEN
N1/4 COR. & S1/4 COR. OF SEC. 17.
E1/4 CORNER - FOUND IRON PIN W/ORANGE CAP #13721 0.4' DEEP.



PLAN VIEW SHOWING RELATIVE LOCATION OF MONUMENT AND REFERENCE POINTS.



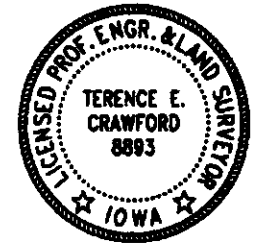
DISTANCES PLUMB CHAINED
CENTER SECTION 17-85-40



DISTANCES PLUMB CHAINED
E1/4 CORNER SECTION 17-85-40

I HEREBY CERTIFY THAT THIS LAND SURVEYING DOCUMENT WAS PREPARED
AND THE RELATED SURVEY WORK WAS PERFORMED BY ME OR UNDER MY
DIRECT PERSONAL SUPERVISION AND THAT I AM A DULY LICENSED LAND
SURVEYOR UNDER THE LAWS OF THE STATE OF IOWA.

Terence E. Crawford
TERENCE E. CRAWFORD
IA LICENSE NO. 8893
DATE
SEP 16 2010
EXP. DATE DECEMBER 31, 2011



SE PROJECT NO. 20510
DRAWN BY: LLL