

INDEXED       
FOLLOW UP       
PROOFED       
SCANNED     

09/17/2010 @11:13AM  
PLC PLAT CORNER CER # Pages: 1  
Book: Page: \$9.00  
Total Fees:

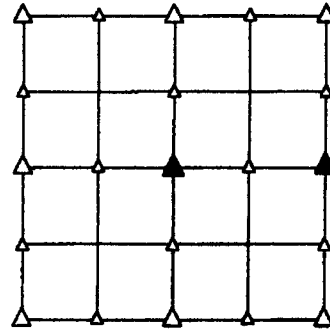
PREPARED BY - TERENCE E. CRAWFORD - SUNDOQUIST ENGINEERING - 120 S. MAIN, DENISON, IOWA 51442 - PHONE (712) 283-8118

**UNITED STATES PUBLIC LAND SURVEY CORNER CERTIFICATE  
OF**

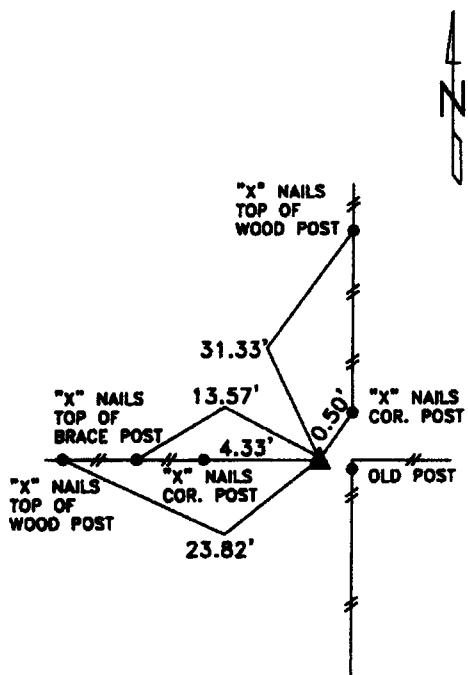
LAND SURVEY MONUMENT SITUATED IN SECTION 17, T 85 N, R 40 W OF  
THE 5TH P.M., CRAWFORD COUNTY, IOWA.  
PREVIOUSLY RECORDED IN BOOK     , PAGE     , OTHER     

**MONUMENT DESCRIPTION AND REMARKS**

CENTER - SET 5/8" DIA. X 18" IRON PIN W/YELLOW CAP #8893  
FLUSH, SET FROM LOCAL EVIDENCE & ON LINE BETWEEN  
N1/4 COR. & S1/4 COR. OF SEC. 17.  
E1/4 CORNER - FOUND IRON PIN W/ORANGE CAP #13721 0.4' DEEP.

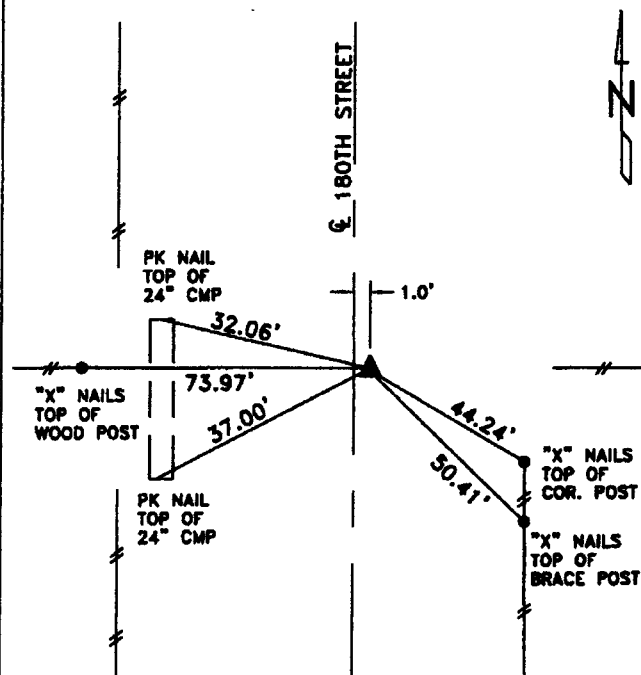


**PLAN VIEW SHOWING RELATIVE LOCATION OF MONUMENT AND REFERENCE POINTS.**



DISTANCES PLUMB CHAINED

CENTER SECTION 17-85-40

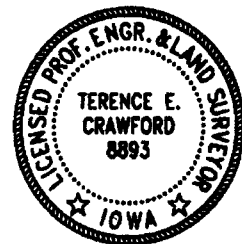


DISTANCES PLUMB CHAINED

E1/4 CORNER SECTION 17-85-40

I HEREBY CERTIFY THAT THIS LAND SURVEYING DOCUMENT WAS PREPARED AND THE RELATED SURVEY WORK WAS PERFORMED BY ME OR UNDER MY DIRECT PERSONAL SUPERVISION AND THAT I AM A DULY LICENSED LAND SURVEYOR UNDER THE LAWS OF THE STATE OF IOWA.

*Terence E. Crawford*  
TERENCE E. CRAWFORD  
IA LICENSE NO. 8893  
DATE  
SEP 16 2010  
EXP. DATE DECEMBER 31, 2011



SE PROJECT NO. 20510  
DRAWN BY: LLL