

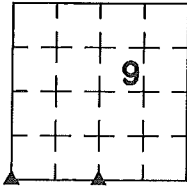
# UNITED STATES PUBLIC LAND SURVEY CORNER CERTIFICATE

INDEXED YM  
 FOLLOW UP \_\_\_\_\_  
 PROOFED \_\_\_\_\_  
 SCANNED \_\_\_\_\_

**Prepared by & Return to:** Joseph A. Snethen, P.L.S.  
 PH: 515-832-1876 Ryken Engineering & Land Surveying, Inc.  
 FAX: 515-832-1932 511 Bank St., Webster City, IA, 50595

**Corners to be Indexed**

Corners	Section	Township	Range
SW Corner	9	T85N	R40W
S¼ Corner	9	T85N	R40W



**Instrument #: 2017-1672**  
 08/28/2017 10:14:05 AM Total Pages: 2  
 PLC PLAT CORNER CER  
 Recording Fee: \$12.00 Transfer Tax: \$0  
 Denise Neeves, Recorder, Crawford County Iowa



Land Survey Monuments situated in Section 9, Township 85 North, Range 40 West, of the Fifth Principal Meridian, Crawford County, Iowa, Previously recorded in (see below) in County Recorder's Office.

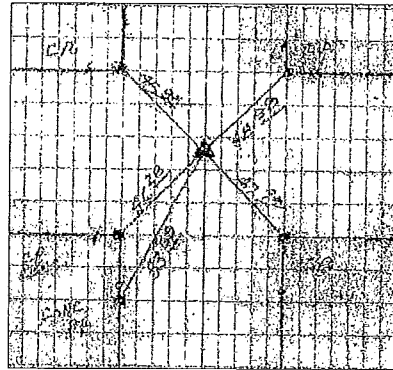
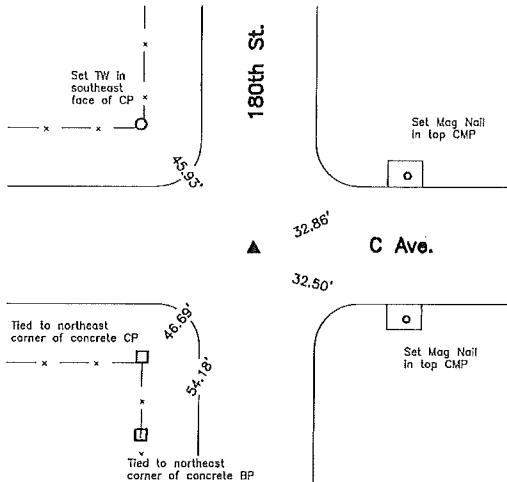
SW Corner – Not Applicable

S¼ Corner – Fee Book 2010-2829

These corners were used for a survey in this section for Kragel Farm Corporation. Basis of bearing for this corner certificate can be found on the associated plot of survey filed in the County Recorder's Office for this section.

## SW Corner

## County Engineer's Record Ties



**History of Corner =**

- 1882, May 31 - "Old Cor Plain" per County Engineer's McHenry Field Book 14 Page 114.
- 1896, Jan. 5 - "stone in Old Govt" per County Engineer's Surveyor's Record Book Page 209.
- Unknown - "Found, rock 8"x10"x12" - 14" deep, 3 pieces of strap iron 2"x10" 3½" deep, 2 pieces of windmill frame 3½" deep. Set C.M." per County Engineer's WPA Morgan Twp Field Book Page 49.
- 2005, Apr. 5 - "FOUND WOODEN STAKE 4' LONG UPRIGHT AT 2' DEEP. IT AGREES WITH SPLIT OF FENCES AND PREVIOUS TIE TO THE SW. DUG 8'X5'X5' NO CORNER FOUND SET 58"x14" REBAR 10" DEEP AT LOCATION OF STAKE." per County Engineer's WPA Morgan Twp Field Book Page 49.

For previous and current County Engineer's ties, see County Engineer's WPA Field Book Morgan Twp Page 49 with ties as shown.

**Corner Recovery =**

Searched a 10'± area with metal detector, excavated 3.0'± x 5.0'± deep hole at reading and found a 5/8"± x 1.2' iron rod 1.2' deep, over a 3/4" x 1 1/4" x 0.7'± rotten wood lath base from 4.2' to 4.9' deep in centerline of traveled surface of gravel road (North-South) and inline with traveled surfaces of dirt roads (East and West). Tied out and removed monuments, searched hole with metal detector and with a tile probe to 7.0'± deep, and found nothing. Monuments found match that of record and record ties are within reason. Therefore, set 3/4"± x 4.0' aluminum capped iron rod 2.2' deep to perpetuate lath location, placed lath remains around rod at 4.0' deep as memorial, reset 3/8"± rebar in original location and depth on 3/4"± rebar to raise up monumentation, and used 5/8"± rod as the correct corner. All ties are plumb distance unless indicated otherwise.

This certificate is being prepared because there are no certificates on file for this corner.



I hereby certify that this land surveying document was prepared and the related survey work was performed by me or under my direct personal supervision and that I am a duly licensed Professional Land Surveyor under the laws of the State of Iowa.

*Joseph A. Snethen*  
 JOSEPH A. SNETHEN, PLS  
 Date: 8-23-2017 License number: 23133  
 My license renewal date is December 31, 2018  
 Pages or sheets covered by this seal: 1 & 2

**Legend**

- BP = Brace Post
- CP = Corner Post
- CMP = Corrugated Metal Pipe
- IR = 1/2"± x 2.0' Iron Rod
- TW = Iron Nail with Round Metal Washer

