

INDEXED DM/bm  
 FOLLOW UP ym  
 PROOFED sm  
 SCANNED km

Instrument #: 2016-1557  
 07/28/2016 11:11:06 AM Total Pages: 1  
 PLC PLAT CORNER CER  
 Recording Fee: \$0.00 Transfer Tax: \$0  
 Denise Meeves, Recorder, Crawford County Iowa



PREPARED BY: PAUL ASSMAN-CRAWFORD COUNTY ENGINEER'S OFFICE-COURTHOUSE-DENISON, IA.-712-263-2449

## UNITED STATES PUBLIC LAND SURVEY CORNER CERTIFICATE OF

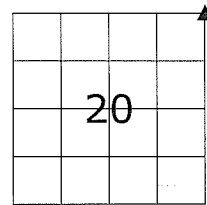
LAND SURVEY MONUMENT SITUATED IN MORGAN TOWNSHIP, THE NORTHEAST CORNER OF SECTION 20, T-85N  
R-40W OF THE FIFTH P.M. CRAWFORD COUNTY, IOWA.

PREVIOUSLY RECORDED AS NO. 2005-2089

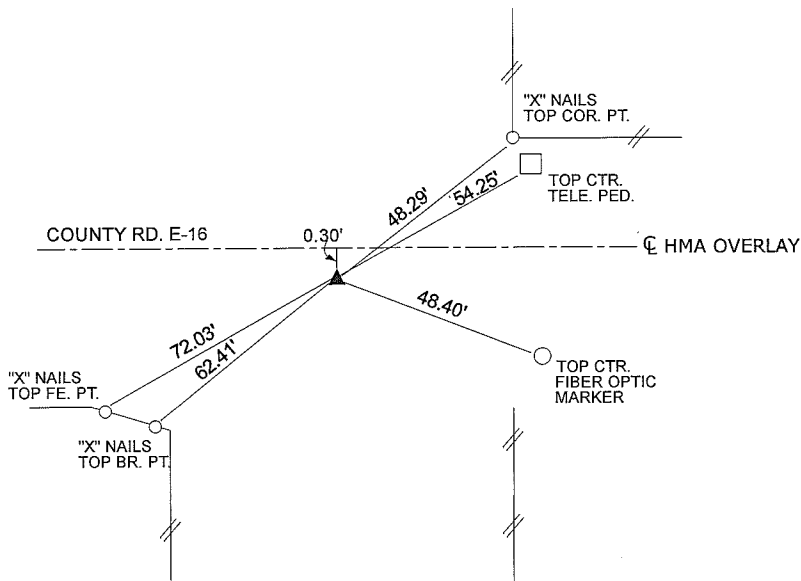
### MONUMENT DESCRIPTION AND REMARKS

NORTHEAST CORNER SEC. 20-85-40

FOUND BOLT FLUSH WITH SURFACE AS SET PER PREVIOUS  
TIES. COMPLETED HMA OVERLAY. SET CARRIAGE BOLT  
0.05' DEEP AND RETIED CORNER.



NORTHEAST CORNER SEC. 20-85-40



ALL DISTANCES ARE PLUMB CHAINED

**CERTIFICATION:**

I HEREBY CERTIFY THAT THIS LAND SURVEYING DOCUMENT WAS PREPARED AND THE RELATED SURVEY WORK WAS PERFORMED BY ME OR UNDER MY DIRECT PERSONAL SUPERVISION AND THAT I AM A DULY LICENSED LAND SURVEYOR UNDER THE LAWS OF THE STATE OF IOWA.

Signature

Date of Survey

PAUL J. ASSMAN  
Typed Name

11982  
L.S. No.

12-31-16  
License Renewal Date

Pages covered by this seal 1

