

INDEXED ME  
 FOLLOW UP ME  
 PROOFED \_\_\_\_\_  
 SCANNED \_\_\_\_\_

REC006757



Crawford County Recorder Denise Meeves  
 FEE BOOK 2005-1500 6/08/2005 @ 02:58PM  
 PLC PLAT CORNER CERBook: Page:05-1500 #: 1  
 Total Fees: \$.00

PREPARED BY: MICKAEL BERNDT  
 CRAWFORD COUNTY ENGINEERS OFFICE - COURTHOUSE - DENISON, IA. - 712-263-2449

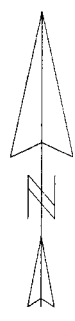
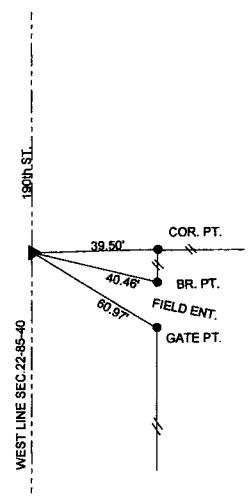
**UNITED STATES PUBLIC LAND SURVEY CORNER CERTIFICATE**  
**OF**  
 LAND SURVEY MONUMENT SITUATED IN MORGAN TOWNSHIP, THE WEST 1/4  
 CORNER OF SECTION 22, T-85N, R-40W OF THE 5TH P.M. CRAWFORD COUNTY, IOWA.  
 PREVIOUSLY RECORDED AS INST. NO. 99-2154

**MONUMENT DESCRIPTION AND REMARKS**

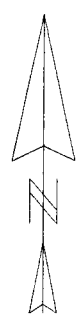
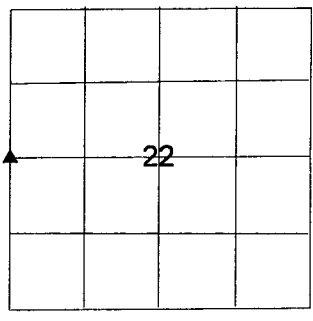
WEST 1/4 CORNER SEC.22-85-40

CRAWFORD COUNTY GRADED THE ROAD IN 2004. THE CORNER WAS TIED OFF AT THAT TIME AND SET BACK WHEN THE GRADING WAS FINISHED. CORNER WAS PREVIOUSLY ESTABLISHED BY E.R. LOEBIG NO.4981.

WEST 1/4 CORNER SEC. 22-85-40  
 SET 5/8" X 14" REBAR 0.5" DEEP  
 WITH A YELLOW CAP # 140808



CORNER: WEST 1/4  
 SECTION: 22  
 TOWNSHIP: 85N  
 RANGE: 40W



I HEREBY CERTIFY THAT THIS LAND SURVEYING DOCUMENT WAS PREPARED AND THE RELATED SURVEY WORK WAS PERFORMED BY ME OR UNDER MY DIRECT PERSONAL SUPERVISION AND THAT I AM A DULY LICENSED LAND SURVEYOR UNDER THE LAWS OF THE STATE OF IOWA.

Michael Berndt 6-8-05  
 MICKAEL F. BERNDT DATE  
 IA. LICENSE NO. 14808 EXP. DATE 12-31-06

