

Instrument #: 2022-0008
 01/03/2022 08:55:25 AM Total Pages: 1
 PLC PLAT COR CERT
 Recording Fee: \$7.00 Transfer Tax: \$0
 Denise Meeves, Recorder, Crawford County Iowa



PREPARED BY - JOSEPH P. RUESCHENBERG - SUNDQUIST ENGINEERING - 120 S. MAIN, DENISON, IOWA 51442 - PHONE (712) 263-8118

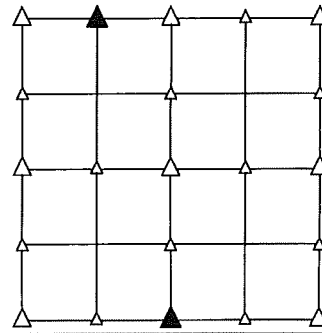
UNITED STATES PUBLIC LAND SURVEY CORNER CERTIFICATE
 OF

LAND SURVEY MONUMENT SITUATED IN SECTION 23, T 85 N, R 40 W OF
 THE 5TH P.M., CRAWFORD COUNTY, IOWA.
 PREVIOUSLY RECORDED IN BOOK _____, PAGE _____, OTHER _____

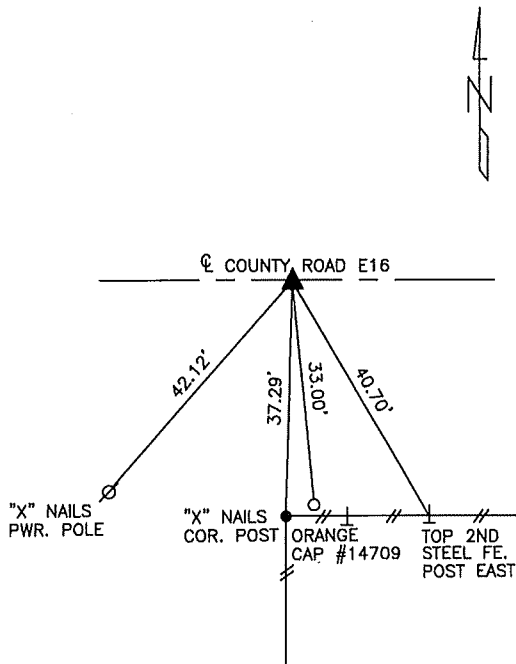
MONUMENT DESCRIPTION AND REMARKS

NE CORNER
 NW1/4 NW1/4 - SET PK NAIL ON LINE AND AT SPLIT BETWEEN
 NW COR. & N1/4 COR. OF SEC. 23.

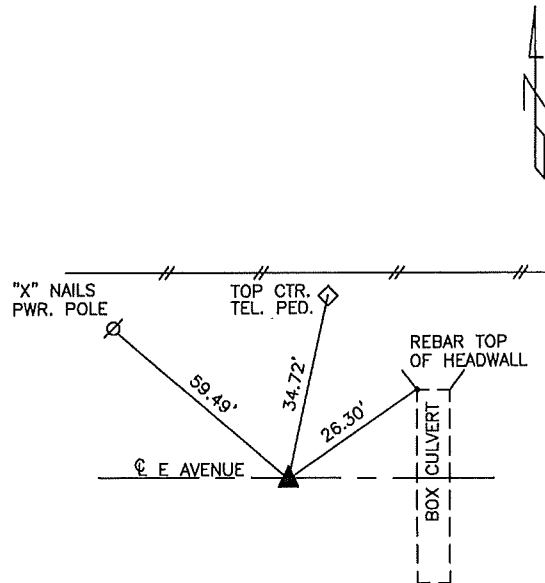
 S1/4 CORNER - SET 5/8" DIA. X 18" IRON PIN W/ORANGE CAP
 #14709 6" DEEP. SET USING OLD TIES.



PLAN VIEW SHOWING RELATIVE LOCATION OF MONUMENT AND REFERENCE POINTS.



DISTANCES PLUMB CHAINED
 NE CORNER NW1/4 NW1/4
 SECTION 23-85-40



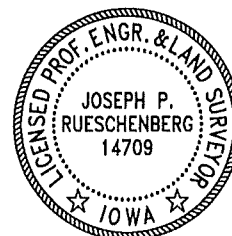
DISTANCES PLUMB CHAINED
 S1/4 CORNER SECTION 23-85-40

I HEREBY CERTIFY THAT THIS LAND SURVEYING DOCUMENT WAS PREPARED AND THE RELATED SURVEY WORK WAS PERFORMED BY ME OR UNDER MY DIRECT PERSONAL SUPERVISION AND THAT I AM A DULY LICENSED LAND SURVEYOR UNDER THE LAWS OF THE STATE OF IOWA.

Joseph P. Rueschenberg 12-23-2021
 JOSEPH P. RUESCHENBERG DATE

IA LICENSE NO. 14709

EXP. DATE DECEMBER 31, 2022



SE PROJECT NO. 27921
 DRAWN BY: LLL