

INDEXED KM
 FOLLOW UP _____
 PROOFED _____
 SCANNED _____

Instrument #: 2018-1943
 09/19/2018 08:27:33 AM Total Pages: 1
 PLC PLAT CORNER CER
 Recording Fee: \$0.00 Transfer Tax: \$0
 Denise Meeves, Recorder, Crawford County Iowa



PREPARED BY: PAUL ASSMAN-CRAWFORD COUNTY ENGINEER'S OFFICE-COURTHOUSE-DENISON, IA.-712-263-2449

UNITED STATES PUBLIC LAND SURVEY CORNER CERTIFICATE OF

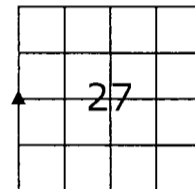
LAND SURVEY MONUMENT SITUATED IN MORGAN TOWNSHIP, THE WEST 1/4 CORNER OF SECTION 27, T-85N,
R-40W OF THE FIFTH P.M. CRAWFORD COUNTY, IOWA.

PREVIOUSLY RECORDED AS NO. 2005-2617

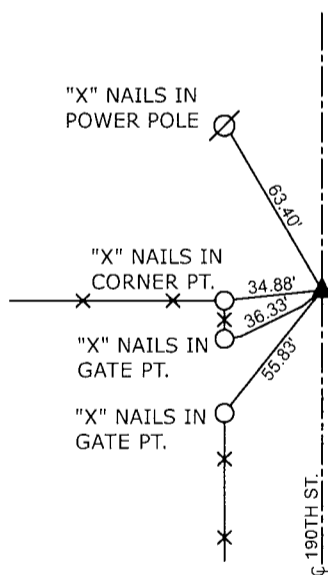
MONUMENT DESCRIPTION AND REMARKS

WEST 1/4 CORNER SEC. 27-85-40

FOUND 5/8" REBAR 0.5' DEEP IN ACCORDANCE WITH PREVIOUS TIES. COUNTY GRADED ROAD, PROJECT NO. LG50-27W. SET 5/8" X 18" REBAR WITH RED CAP #11982 0.8' DEEP OVER MONUMENT 2.2' DEEP AND RETIED CORNER.



WEST 1/4 CORNER SEC. 27-85-40



ALL DISTANCES ARE SLOPE CHAINED

CERTIFICATION:

I HEREBY CERTIFY THAT THIS LAND SURVEYING DOCUMENT WAS PREPARED AND THE RELATED SURVEY WORK WAS PERFORMED BY ME OR UNDER MY DIRECT PERSONAL SUPERVISION AND THAT I AM A DULY LICENSED LAND SURVEYOR UNDER THE LAWS OF THE STATE OF IOWA.

Paul J. Assman 7/31/18
 Signature Date of Survey

PAUL J. ASSMAN 11982 12-31-18
 Typed Name L.S. No. License Renewal Date

Pages covered by this seal 1

