

3514 ✓

INDEXED sm
FOLLOW UP _____
PROOFED _____
SCANNED _____

Instrument #: 2018-2681
12/27/2018 09:42:51 AM Total Pages: 1
PLC PLAT CORNER CER
Recording Fee: \$7.00 Transfer Tax: \$0
Denise Meeves, Recorder, Crawford County Iowa

PREPARED BY - JOSEPH P. RUESCHENBERG - SUNDQUIST ENGINEERING - 120 S. MAIN, DENISON, IOWA 51442 - PHONE (712) 263-8118

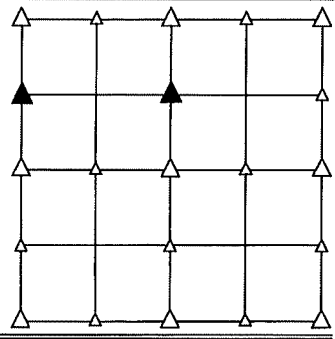
UNITED STATES PUBLIC LAND SURVEY CORNER CERTIFICATE OF

LAND SURVEY MONUMENT SITUATED IN SECTION 28, T 85 N, R 40 W OF
THE 5TH P.M., CRAWFORD COUNTY, IOWA.
PREVIOUSLY RECORDED IN BOOK _____, PAGE _____, OTHER _____

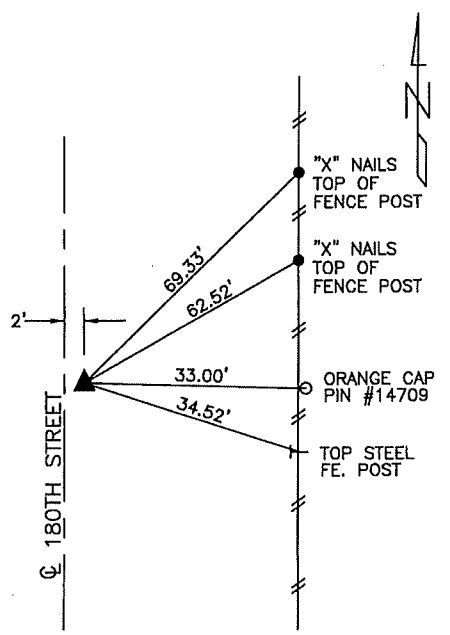
MONUMENT DESCRIPTION AND REMARKS

NW CORNER
S1/2 NW1/4 - SET 5/8" DIA. X 18" IRON PIN W/ORANGE CAP
#14709 0.4' DEEP. SET ON LINE & AT SPLIT BETWEEN
W1/4 COR. & NW COR. OF SEC. 28.

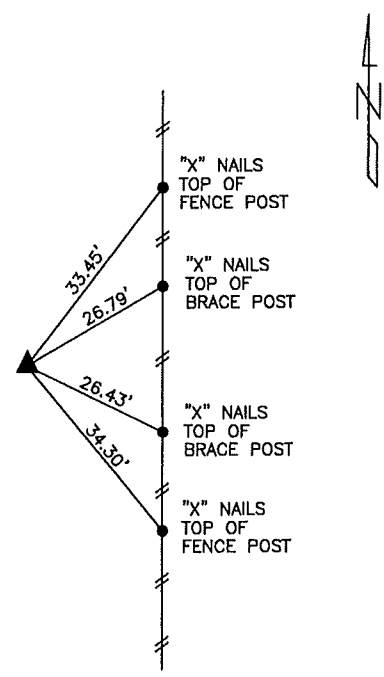
NE CORNER
S1/2 NW1/4 - SET 5/8" DIA. X 18" IRON PIN W/ORANGE CAP
#14709 0.8' DEEP. SET ON LINE & AT SPLIT BETWEEN
CENTER & N1/4 COR. OF SEC. 28.



PLAN VIEW SHOWING RELATIVE LOCATION OF MONUMENT AND REFERENCE POINTS.



DISTANCES PLUMB CHAINED
NW CORNER S1/2 NW1/4
SECTION 28-85-40

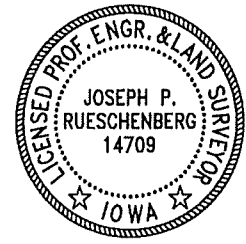


DISTANCES PLUMB CHAINED
NE CORNER S1/2 NW1/4
SECTION 28-85-40

I HEREBY CERTIFY THAT THIS LAND SURVEYING DOCUMENT WAS PREPARED AND THE RELATED SURVEY WORK WAS PERFORMED BY ME OR UNDER MY DIRECT PERSONAL SUPERVISION AND THAT I AM A DULY LICENSED LAND SURVEYOR UNDER THE LAWS OF THE STATE OF IOWA.

Joseph P. Rueschenberg 12-17-2018
JOSEPH P. RUESCHENBERG DATE

IA LICENSE NO. 14709 EXP. DATE DECEMBER 31, 2018



SE PROJECT NO. 24718
DRAWN BY: LLL