

29

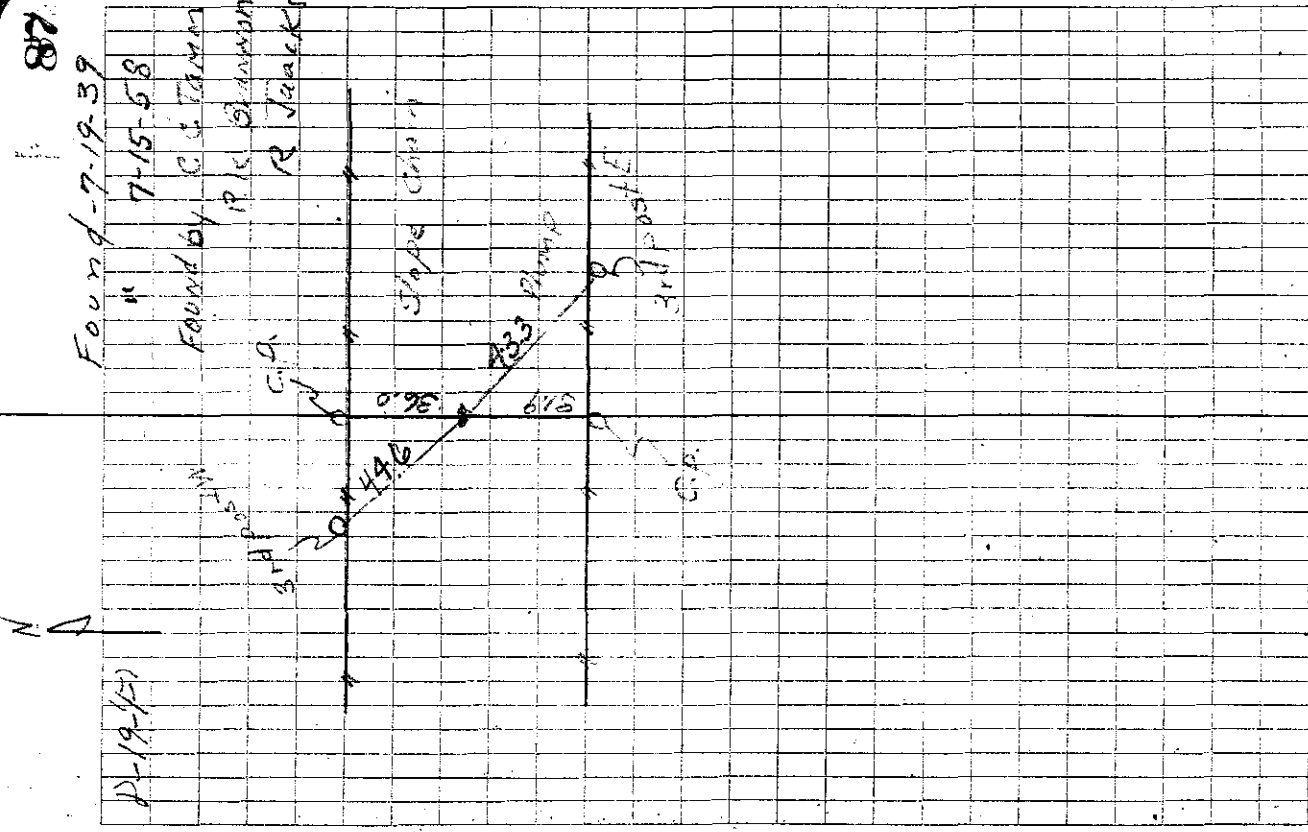
Found / large red rock 50' A 10" x 16" at road surface. lowered grid set G.M.

Ties from  
S. from cor post  
SE " 3rd post W.  
N " " cor post E  
NW " " 3rd post E

Found - 7-19-39

" 7-15-58

Found by C. C. TAMM  
P. K. BLANCK  
R. JACKS



P-19-41

3rd post W

G.P.

20 x 44.6

Slope change

333

6 1/8

3rd post E

G.P.