



INDEXED
FOLLOW UP
PROOFED
SCANNED

Crawford County Recorder Denise Meeves
FEE BOOK 2005-2795 10/14/2005 @ 12:55PM
PLC PLAT CORNER CERBook: Page:05-2795 #: 1
Total Fees: \$7.00

PREPARED BY - TERENCE E. CRAWFORD - SUNDQUIST ENGINEERING - 120 S. MAIN, DENISON, IOWA 51442 - PHONE (712) 263-8118

UNITED STATES PUBLIC LAND SURVEY CORNER CERTIFICATE OF

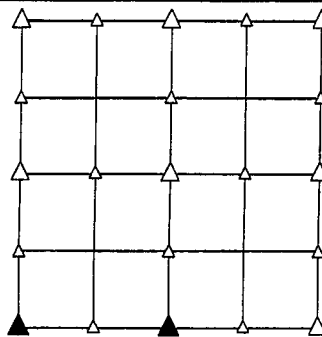
LAND SURVEY MONUMENT SITUATED IN SECTION 21, T 85 N, R 40 W OF
THE 5TH P.M., CRAWFORD COUNTY, IOWA.

PREVIOUSLY RECORDED IN BOOK _____, PAGE _____, OTHER _____

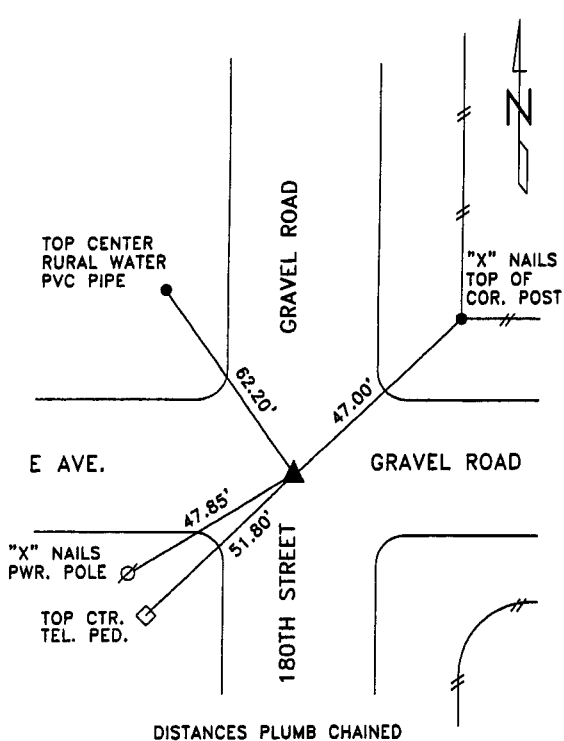
MONUMENT DESCRIPTION AND REMARKS

SW CORNER - FOUND 5/8" DIA. STEEL PIN PAINTED PINK 0.8' DEEP,
PROBED FOR CM BELOW PIN BUT DID NOT FIND.

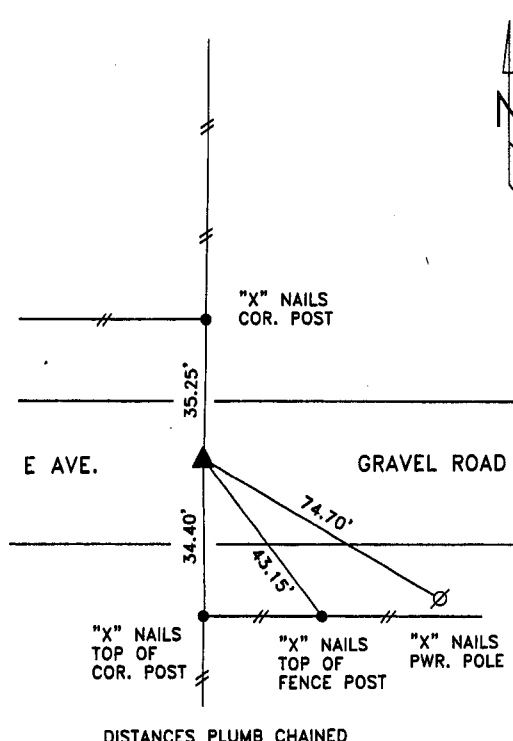
S1/4 CORNER - FOUND CM 2.5' DEEP W/PINCHED PIPE OVER CM
0.5' DEEP, CM IS ON LINE W/FENCE NORTH &
2' EAST OF FENCE SOUTH.



PLAN VIEW SHOWING RELATIVE LOCATION OF MONUMENT AND REFERENCE POINTS.



SW CORNER SECTION 21-85-40



S1/4 CORNER SECTION 21-85-40

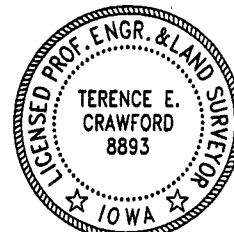
I HEREBY CERTIFY THAT THIS LAND SURVEYING DOCUMENT WAS PREPARED AND THE RELATED SURVEY WORK WAS PERFORMED BY ME OR UNDER MY DIRECT PERSONAL SUPERVISION AND THAT I AM A DULY LICENSED LAND SURVEYOR UNDER THE LAWS OF THE STATE OF IOWA.

Terence E. Crawford

SEP 14 2005

TERENCE E. CRAWFORD
IA LICENSE NO. 8893

DATE
EXP. DATE DECEMBER 31, 2005



SE PROJECT NO. 24205
DRAWN BY: LLL