

REVISIONS  
 FOLLOW UP  
 PRINTED  
 SCANNED

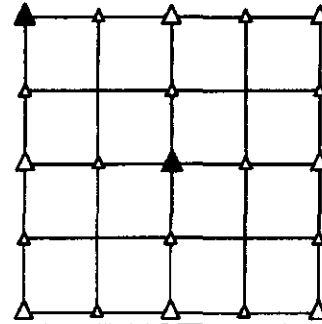
PREPARED BY - JOSEPH P. RUESCHENBERG - SUNDQUIST ENGINEERING - 120 S. MAIN, DENISON, IOWA 51442 - PHONE (712) 263-8110

**UNITED STATES PUBLIC LAND SURVEY CORNER CERTIFICATE**  
**OF**

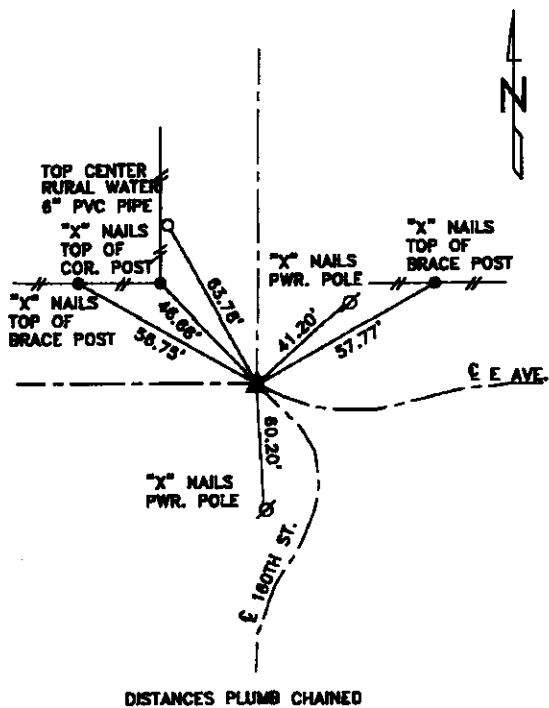
LAND SURVEY MONUMENT SITUATED IN SECTION 30, T 85 N, R 40 W OF  
 THE 5TH P.M., CRAWFORD COUNTY, IOWA.  
 PREVIOUSLY RECORDED IN BOOK \_\_\_\_\_, PAGE \_\_\_\_\_, OTHER \_\_\_\_\_

**MONUMENT DESCRIPTION AND REMARKS**

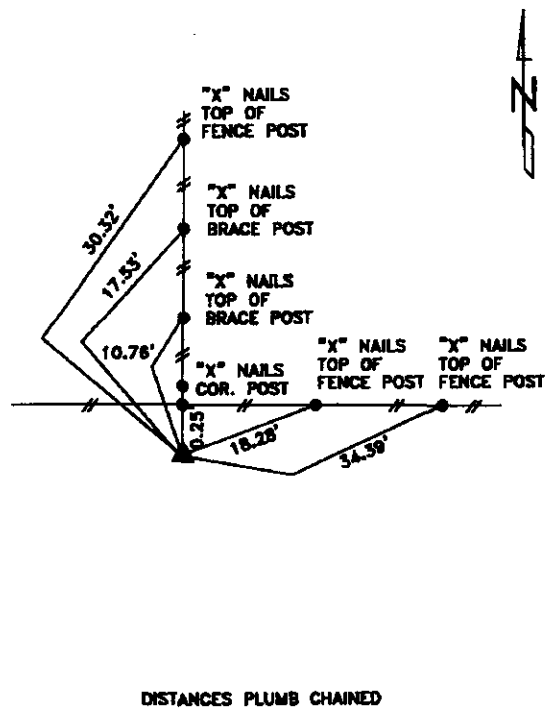
NW CORNER - FOUND IRON PIN W/YELLOW CAP #6806 0.8' DEEP  
 ON CENTERLINE WITH ROADS NORTH AND WEST.  
 CENTER - SET 5/8" DIA. X 18" IRON PIN W/ORANGE CAP  
 #14709 FLUSH, SET FROM LOCAL EVIDENCE.



**PLAN VIEW SHOWING RELATIVE LOCATION OF MONUMENT AND REFERENCE POINTS.**



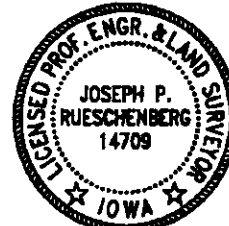
NW CORNER SECTION 30-85-40



CENTER OF SECTION 30-85-40

I HEREBY CERTIFY THAT THIS LAND SURVEYING DOCUMENT WAS PREPARED AND THE RELATED SURVEY WORK WAS PERFORMED BY ME OR UNDER MY DIRECT PERSONAL SUPERVISION AND THAT I AM A DULY LICENSED LAND SURVEYOR UNDER THE LAWS OF THE STATE OF IOWA.

*Joseph P. Rueschenberg* 6-3-2013  
 JOSEPH P. RUESCHENBERG DATE  
 IA LICENSE NO. 14709 EXP. DATE DECEMBER 31, 2014



SE PROJECT NO. 22013  
 DRAWN BY: LLL