

COPY

FOLLOW UP
120001
CRAWF
WV



Crawford County Recorder Denise Heeves
Fee Book 2006-2938 RECO12256
10/17/2006 @0312PM # Pages 1
PLC PLAT CORNER CER
Total Fees: \$7.00

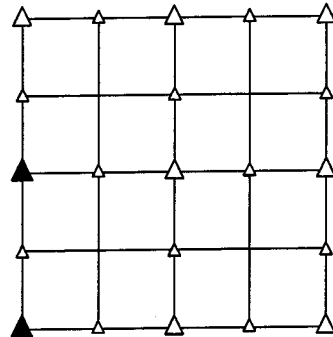
PREPARED BY - TERENCE E. CRAWFORD - SUNDQUIST ENGINEERING - 120 S. MAIN, DENISON, IOWA 51442 - PHONE (712) 263-8118

UNITED STATES PUBLIC LAND SURVEY CORNER CERTIFICATE OF

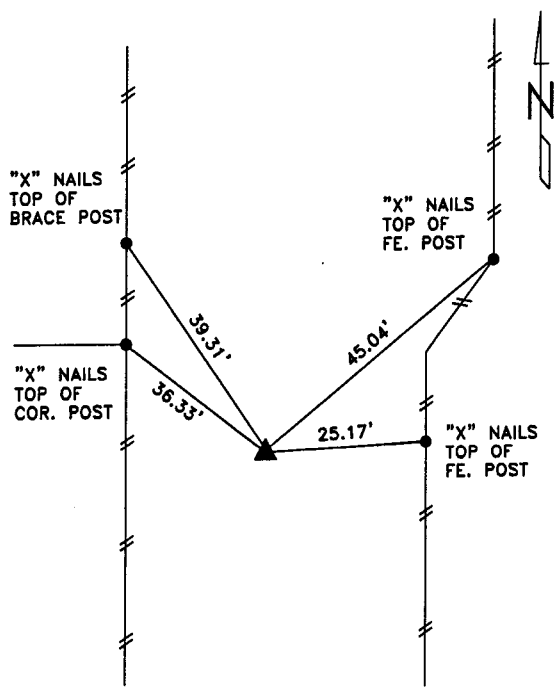
LAND SURVEY MONUMENT SITUATED IN SECTION 29, T 85 N, R 40 W OF
THE 5TH P.M., CRAWFORD COUNTY, IOWA.
PREVIOUSLY RECORDED IN BOOK _____, PAGE _____, OTHER _____

MONUMENT DESCRIPTION AND REMARKS

W1/4 CORNER - FOUND CM 8.5' DEEP BY COUNTY ROAD DEPT.,
SET IRON PIN W/YELLOW CAP #8893 0.4' DEEP.
SW CORNER - FOUND IRON PIN 10" DEEP FROM OLD COUNTY TIES.

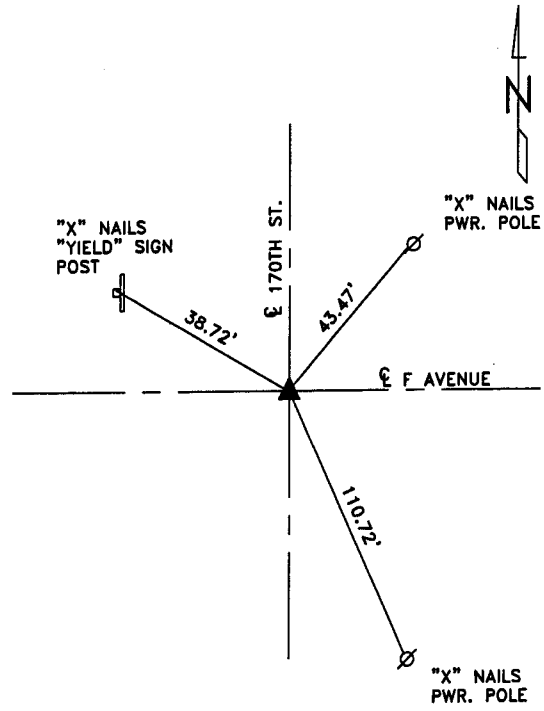


PLAN VIEW SHOWING RELATIVE LOCATION OF MONUMENT AND REFERENCE POINTS.



DISTANCES PLUMB CHAINED

W1/4 CORNER SECTION 29-85-40



DISTANCES PLUMB CHAINED

SW CORNER SECTION 29-85-40

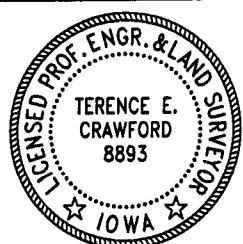
I HEREBY CERTIFY THAT THIS LAND SURVEYING DOCUMENT WAS PREPARED AND THE RELATED SURVEY WORK WAS PERFORMED BY ME OR UNDER MY DIRECT PERSONAL SUPERVISION AND THAT I AM A DULY LICENSED LAND SURVEYOR UNDER THE LAWS OF THE STATE OF IOWA.

Terence E. Crawford
TERENCE E. CRAWFORD
IA LICENSE NO. 8893

OCT 17 2006

DATE

EXP. DATE DECEMBER 31, 2007



SE PROJECT NO. 24406
DRAWN BY: LLL