

COPY

FOLLOW UP PROJECT  
CRAWFORD RECORDER  
Crawford County Recorder Denise Meeves  
Fee Book 2006-2938 REC012256  
10/17/2006 @0312PM # Pages 1  
PLC PLAT CORNER CER  
Total Fees: \$7.00

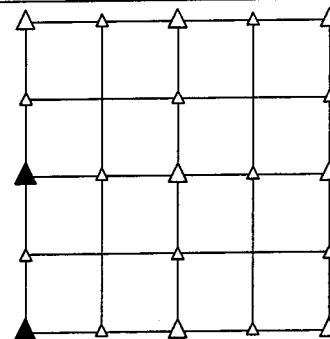
PREPARED BY - TERENCE E. CRAWFORD - SUNDQUIST ENGINEERING - 120 S. MAIN, DENISON, IOWA 51442 - PHONE (712) 263-8118

UNITED STATES PUBLIC LAND SURVEY CORNER CERTIFICATE OF

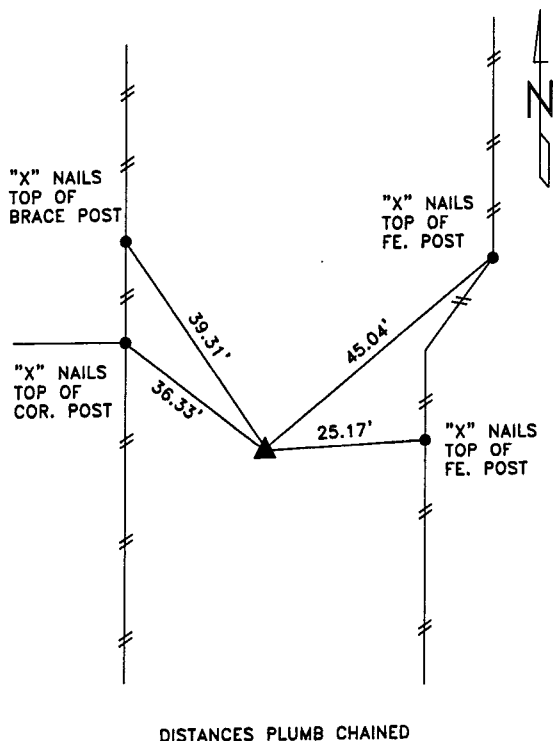
LAND SURVEY MONUMENT SITUATED IN SECTION 29, T 85 N, R 40 W OF THE 5TH P.M., CRAWFORD COUNTY, IOWA. PREVIOUSLY RECORDED IN BOOK \_\_\_\_\_, PAGE \_\_\_\_\_, OTHER \_\_\_\_\_

MONUMENT DESCRIPTION AND REMARKS

W1/4 CORNER - FOUND CM 8.5' DEEP BY COUNTY ROAD DEPT., SET IRON PIN W/YELLOW CAP #8893 0.4' DEEP.  
SW CORNER - FOUND IRON PIN 10" DEEP FROM OLD COUNTY TIES.

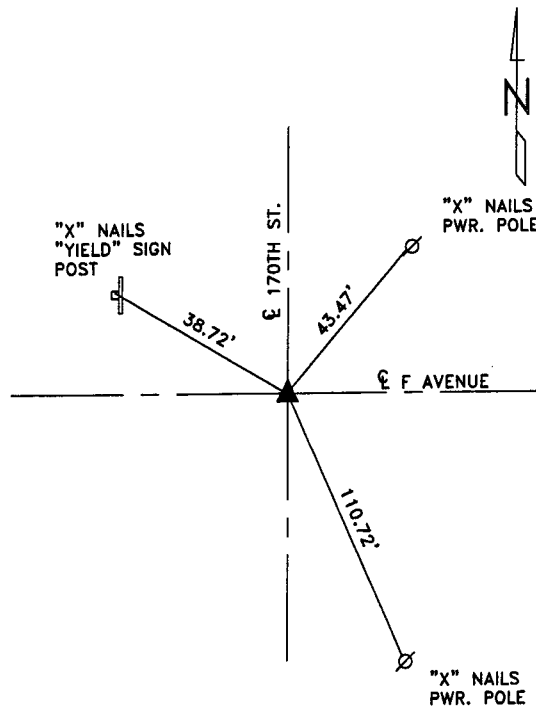


PLAN VIEW SHOWING RELATIVE LOCATION OF MONUMENT AND REFERENCE POINTS.



DISTANCES PLUMB CHAINED

W1/4 CORNER SECTION 29-85-40



DISTANCES PLUMB CHAINED

SW CORNER SECTION 29-85-40

I HEREBY CERTIFY THAT THIS LAND SURVEYING DOCUMENT WAS PREPARED AND THE RELATED SURVEY WORK WAS PERFORMED BY ME OR UNDER MY DIRECT PERSONAL SUPERVISION AND THAT I AM A DULY LICENSED LAND SURVEYOR UNDER THE LAWS OF THE STATE OF IOWA.

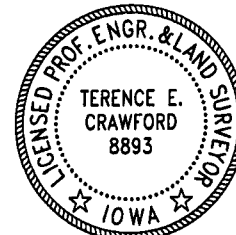
*Terence E. Crawford*  
TERENCE E. CRAWFORD

OCT 17 2006

DATE

IA LICENSE NO. 8893

EXP. DATE DECEMBER 31, 2007



SE PROJECT NO. 24406  
DRAWN BY: LLL