



PREPARED BY: JEFFREY M. KRUEGER L.S., KUEHL AND PAYER LTD., 423 WEST MAIN ST., SAC CITY, IA 50583 PH. (712)662-7859

### UNITED STATES PUBLIC LAND SURVEY CORNER CERTIFICATE OF

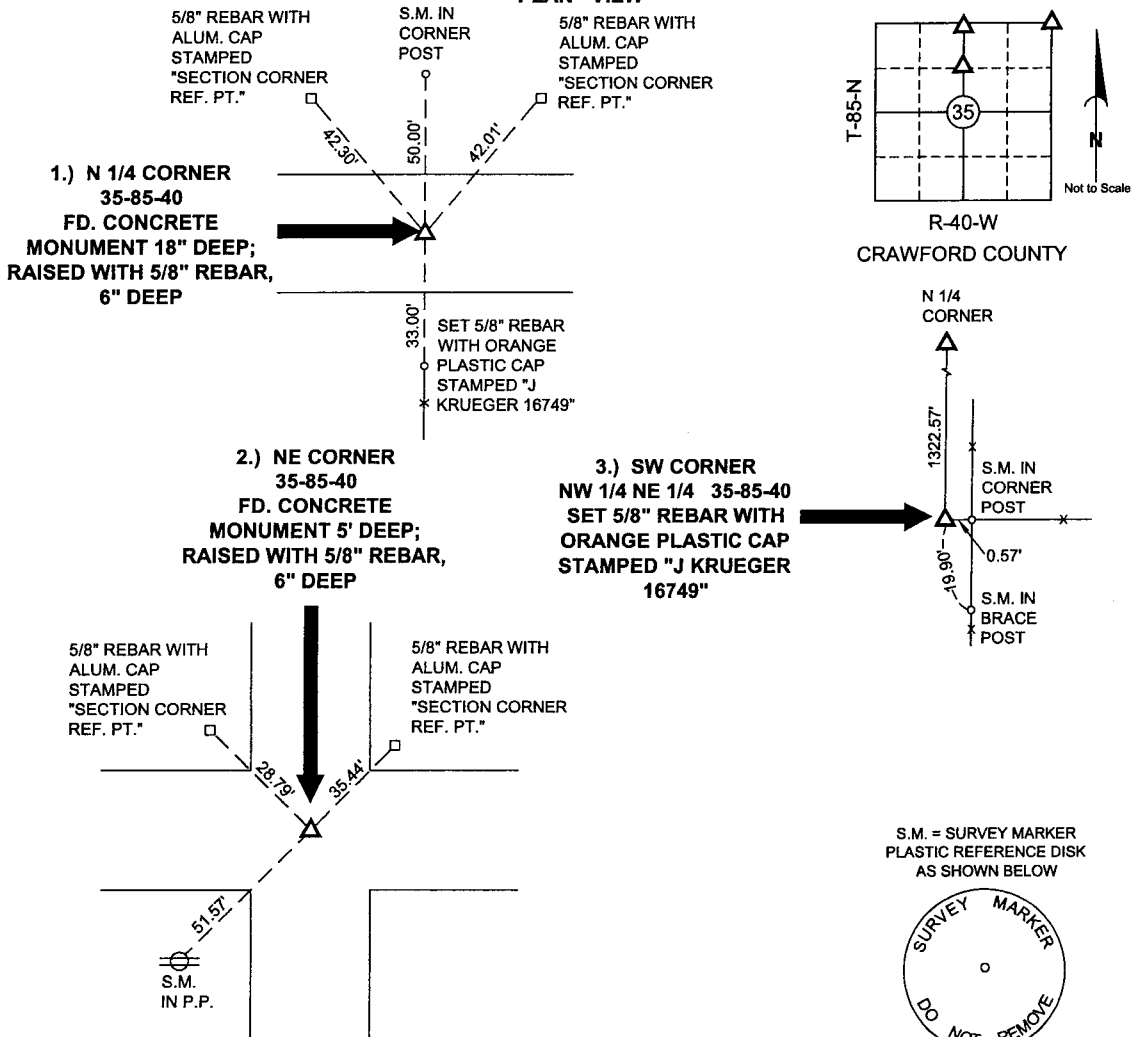
LAND SURVEY MONUMENTS SITUATED IN SECTION 35, TOWNSHIP 85 NORTH,  
RANGE 40 WEST, OF THE 5TH PRINCIPAL MERIDIAN, CRAWFORD COUNTY, IOWA.

PREVIOUSLY RECORDED IN BOOK \_\_\_\_\_ PAGE \_\_\_\_\_

#### MONUMENT DESCRIPTION AND REMARKS:

- 1.) N 1/4 CORNER 35-85-40: FOUND CONCRETE MONUMENT 18" DEEP; RAISED WITH 5/8" REBAR, 6" DEEP.
- 2.) NE CORNER 35-85-40: FOUND CONCRETE MONUMENT 5' DEEP; RAISED WITH 5/8" REBAR, 6" DEEP.
- 3.) SW CORNER NW 1/4 NE 1/4 35-85-40: SEARCHED AND FOUND NOTHING; SET 5/8" REBAR WITH ORANGE PLASTIC CAP STAMPED "J KRUEGER 16749" ON WEST SIDE OF CORNER POST.

#### PLAN - VIEW



I hereby certify that this land surveying document was prepared and that related survey work was performed by me or under my direct personal supervision and that I am a duly licensed Land Surveyor under the laws of the State of Iowa.

*Jeffrey M. Krueger*  
Jeffrey M. Krueger  
License Number 16749  
My license renewal date is December 31, 2006  
Pages covered by this seal 1

Date: 6-17-2005

#### List Corners to be Indexed

Corners	Section	Township	Range
1) N 1/4	35	85	40
2) NE	35	85	40
3) SW NW 1/4 NE 1/4	35	85	40