

REC008985



Crawford County Recorder Denise Meeves  
FEE BOOK 2006-0021 1/03/2006 @ 03:55PM  
PLC PLAT CORNER CERBook: Page:06-0021 #: 1  
Total Fees: \$7.00

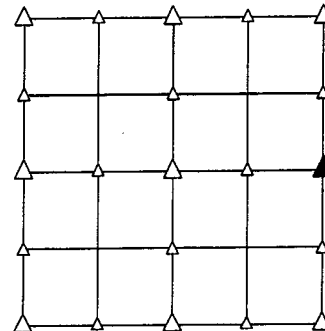
PREPARED BY - TERENCE E. CRAWFORD - SUNDQUIST ENGINEERING - 120 S. MAIN, DENISON, IOWA 51442 - PHONE (712) 263-8118

### UNITED STATES PUBLIC LAND SURVEY CORNER CERTIFICATE OF

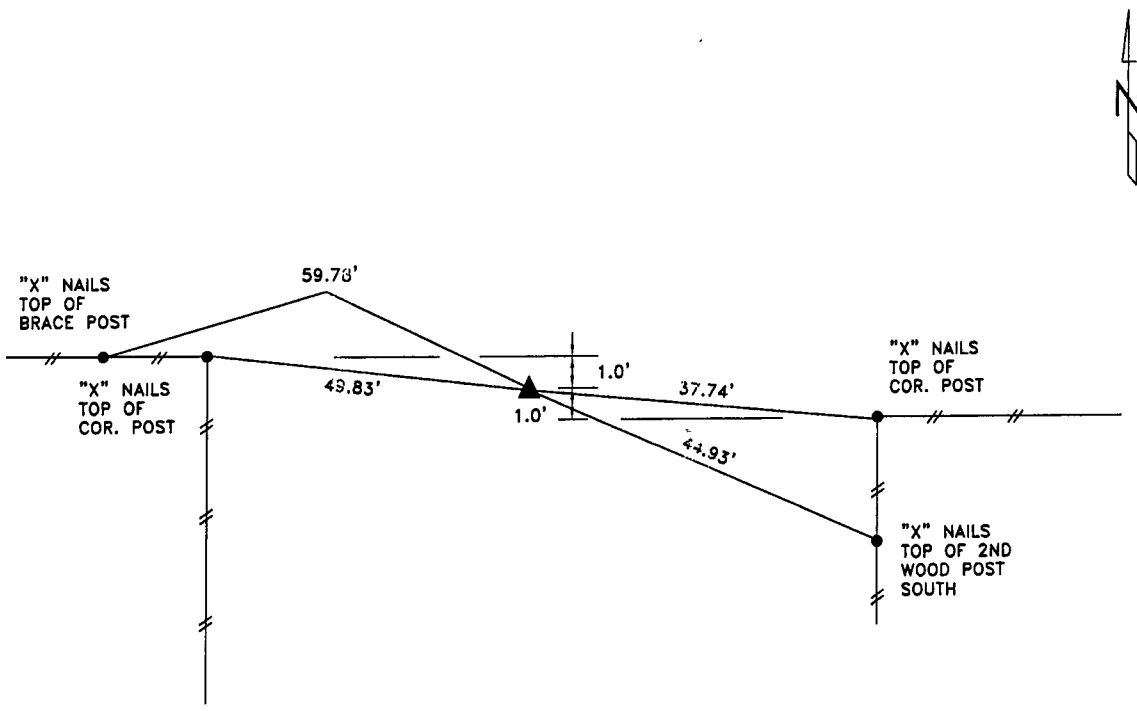
LAND SURVEY MONUMENT SITUATED IN SECTION   3  , T   85   N, R   40   W OF  
THE 5TH P.M.,   CRAWFORD   COUNTY, IOWA.  
PREVIOUSLY RECORDED IN BOOK   , PAGE   , OTHER   

#### MONUMENT DESCRIPTION AND REMARKS

E1/4 CORNER - FOUND 1/2" DIA. IRON PIN 0.15' DEEP.



PLAN VIEW SHOWING RELATIVE LOCATION OF MONUMENT AND REFERENCE POINTS.

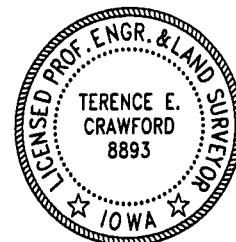


DISTANCES SLOPE CHAINED

E1/4 CORNER SECTION 3-85-40

I HEREBY CERTIFY THAT THIS LAND SURVEYING DOCUMENT WAS PREPARED AND THE RELATED SURVEY WORK WAS PERFORMED BY ME OR UNDER MY DIRECT PERSONAL SUPERVISION AND THAT I AM A DULY LICENSED LAND SURVEYOR UNDER THE LAWS OF THE STATE OF IOWA.

Terence E. Crawford      DEC 22 2005  
TERENCE E. CRAWFORD      DATE  
IA LICENSE NO. 8893      EXP. DATE DECEMBER 31, 2007



SE PROJECT NO.   25605    
DRAWN BY:   LLL