

INDEXED MM  
 FOLLOW UP MM  
 PROOFED SM  
 SCANNED MM

Instrument #: 2020-0892  
 05/05/2020 09:19:41 AM Total Pages: 1  
 PLC PLAT COR CERT  
 Recording Fee: \$0.00 Transfer Tax: \$0  
 Denise Meeves, Recorder, Crawford County Iowa



PREPARED BY: PAUL ASSMAN-CRAWFORD COUNTY ENGINEER'S OFFICE-COURTHOUSE-DENISON, IA.-712-263-2449

## UNITED STATES PUBLIC LAND SURVEY CORNER CERTIFICATE OF

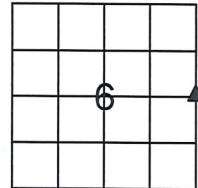
LAND SURVEY MONUMENT SITUATED IN MORGAN TOWNSHIP, THE EAST 1/4 CORNER OF SECTION 6, T-85N,  
R-40W OF THE FIFTH P.M. CRAWFORD COUNTY, IOWA.

PREVIOUSLY RECORDED IN MORGAN TWP FIELD BOOK PAGE 17, COUNTY ENGINEER'S OFFICE.

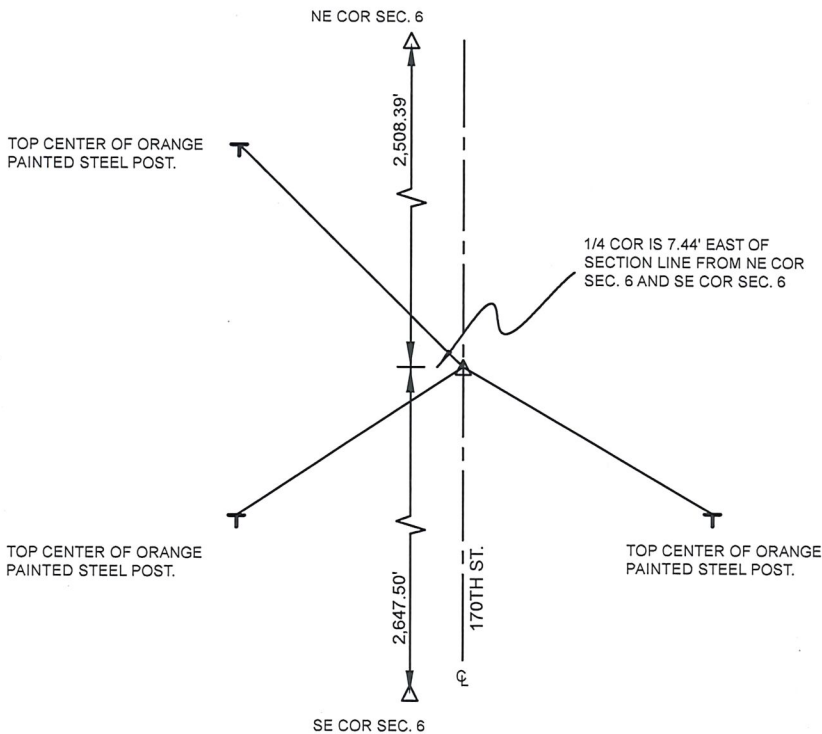
### MONUMENT DESCRIPTION AND REMARKS

EAST 1/4 CORNER SEC. 6-85-40

NO SECTION CORNER MONUMENT OR MARKER FOUND  
 USING OLD TIES.  
 COUNTY RE-ESTABLISH THE LOCATION OF THE CORNER  
 USING FIVE EXISTING TIES FROM RESET ON 4-28-73.  
 COUNTY GRADED ROAD AND SET 5/8" X 18" REBAR WITH  
 RED CAP #11982 1.3' DEEP AND RETIED CORNER.



EAST 1/4 CORNER SEC. 6-85-40



ALL DISTANCES ARE SLOPE CHAINED

**CERTIFICATION:**

I HEREBY CERTIFY THAT THIS LAND SURVEYING DOCUMENT WAS PREPARED AND THE RELATED SURVEY WORK WAS PERFORMED BY ME OR UNDER MY DIRECT PERSONAL SUPERVISION AND THAT I AM A DULY LICENSED LAND SURVEYOR UNDER THE LAWS OF THE STATE OF IOWA.

Paul J. Assman  
 Signature

5/5/20  
 Date of Survey

PAUL J. ASSMAN                      11982                      12-31-20  
 Typed Name                      L.S. No.                      License Renewal Date

Pages covered by this seal 1

