

INDEXED \_\_\_\_\_  
 FOLLOW UP \_\_\_\_\_  
 PROOFED \_\_\_\_\_  
 SCANNED \_\_\_\_\_

REC006095 

Crawford County Recorder Denise  
 FEE BOOK 2005-0935 4/14/2005 @ 09:27AM  
 PLC PLAT CORNER CERBook: Page:05-0935 #: 1  
 Total Fees: \$7.00

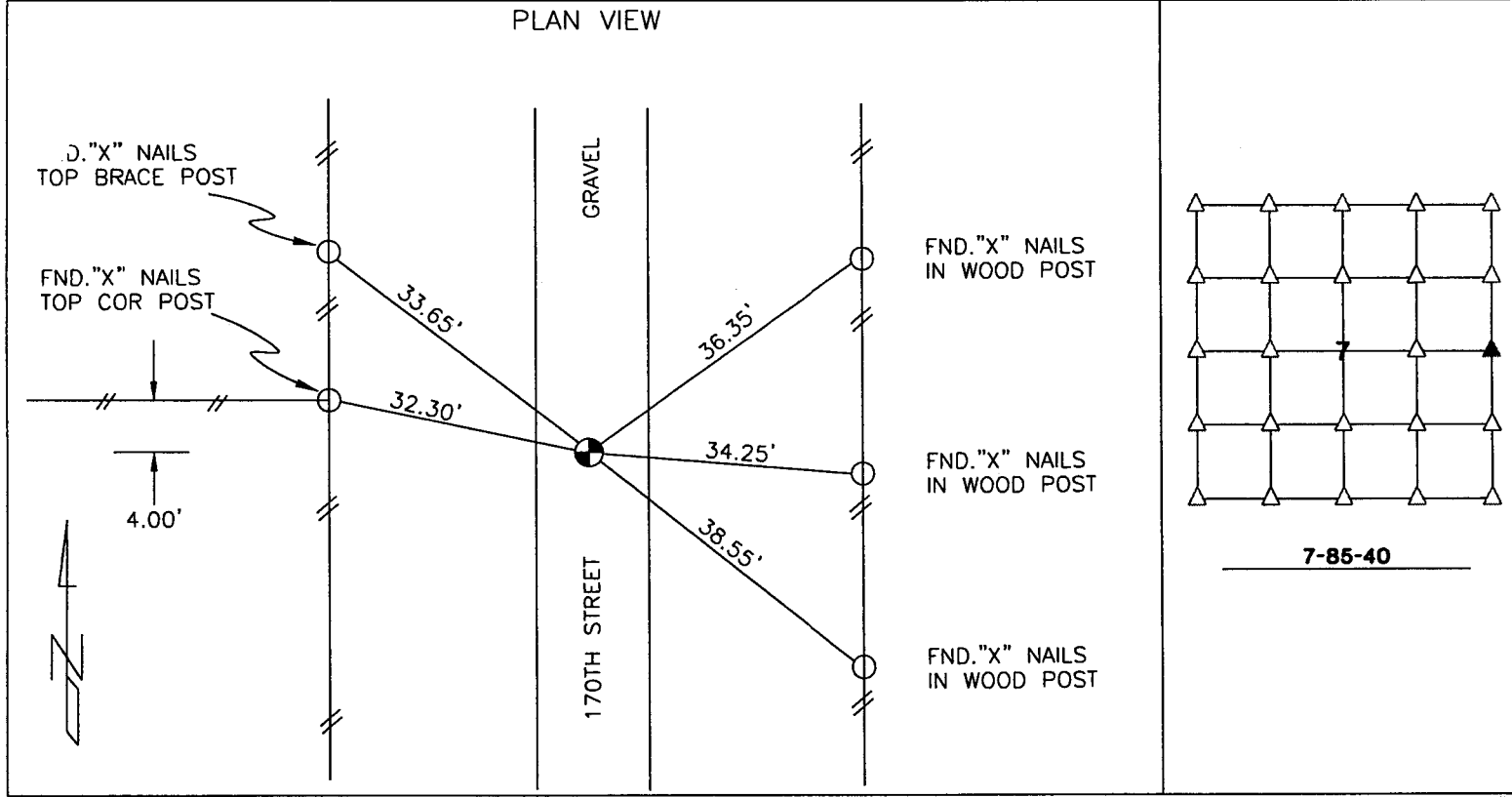
PREPARED BY: JOHN A. MUNSON - SUNDQUIST ENGINEERING - 706 IOWA STREET, ONAWA, IOWA 51040-PHONE (712)423-3131

**UNITED STATES PUBLIC LAND SURVEY CORNER CERTIFICATE OF**  
 LAND SURVEY MONUMENT SITUATED IN SECTION 7, TOWNSHIP 85 NORTH, RANGE 40 WEST  
 OF THE FIFTH PRINCIPAL MERIDIAN, CRAWFORD, COUNTY, IOWA.  
 PREVIOUSLY RECORDED IN # \_\_\_\_\_ IN COUNTY RECORDERS OFFICE.

MONUMENT DESCRIPTION AND REMARKS  
 EAST QUARTER CORNER OF SECTION 7-85-40.  
 FOUND CONCRETE MONUMENT 12" DEEP. MONUMENT MUST HAVE METAL INSIDE AS IT RINGS WITH METAL DETECTOR.  
 MONUMENT FITS CENTERLINE OF NORTH SOUTH ROAD "170TH STREET."  
 MONUMENT IS 4 FEET SOUTH OF FENCE LINE WEST.

L. STUKENHOLTZ & R. ANDERSON

DATE 4-07-05



I HEREBY CERTIFY THAT THIS LAND SURVEYING DOCUMENT AND THE RELATED SURVEY WORK WAS PERFORMED BY ME OR UNDER MY DIRECT PERSONAL SUPERVISION AND THAT I AM A DULY LICENSED LAND SURVEYOR UNDER THE LAWS OF THE STATE OF IOWA.

*John A. Munson III*  
 JOHN A. MUNSON III  
 DATE 4-11-05

IA. LICENSE NO. 11118 EXP. DATE DECEMBER 31, 2006

SE PROJECT NO. 21905-I1 DRAWN BY: LLH

