

REC015210
 Crawford County Recorder
 Denise Meeves
Fee Book 2007-1950
 07/17/2007 002:10PM
 PLC PLAT CORNER CER # Pages: 1
 Book: Page: \$7.00
 Total Fees:

WILKE LAND SURVEYING INC. 401 1800th Street Panama, Iowa 51562 (712)489-2898

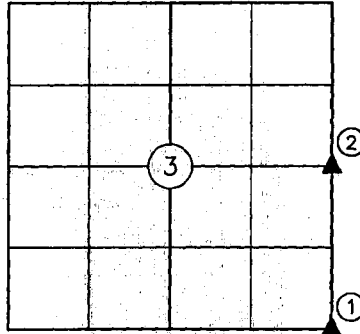
UNITED STATES PUBLIC LAND SURVEY CORNER CERTIFICATE

SECTION 3 TOWNSHIP 82N RANGE 38W COUNTY CRAWFORD

Certificate Prepared For: Survey of a parcel of land in the NE1/4 SE1/4

Monument Description and Remarks:

- ① - Found concrete monument w/brass disc using information from the Crawford County Engineer's Office. Set 5/8" dia. by 18" rebar w/orange cap PLS #17048 above the C.M. (0.4' deep).
- ② - Used metal detection and dug and probed for corner monument but nothing was found. Corner location is directly above a C.M.P. under the road for the creek so when that was put in the monument was lost. Set 5/8" dia. by 24" rebar w/orange cap PLS #17048 (0.3' deep) on line between the NE Corner and SE Corner of Section 3 at a prorated distance between two H. Gene McKeown & Assoc. surveys. One survey was in the NW1/4 of Section 2, T82N, R38W and was recorded and the other was not in the NE1/4 SE1/4 of Section 3, T82N, R38W. I got a copy of the one in the NE1/4 SE1/4 of Section 3 from my clients abstract.



LICENSED LAND SURVEYOR

DEAN A. WILKE

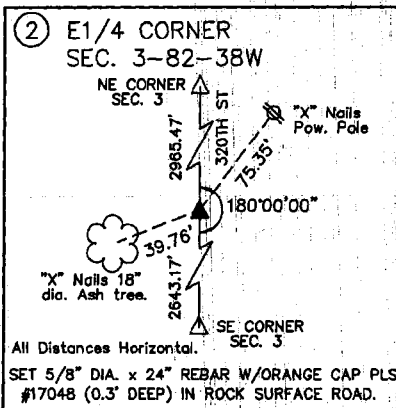
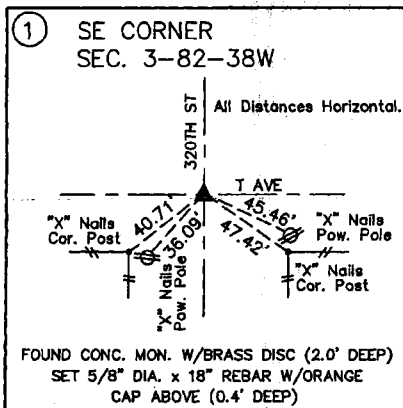
17048

IOWA

I hereby certify that this land surveying document was prepared and the related survey work was performed by me or under my direct personal supervision and that I am a duly licensed Land Surveyor under the laws of the State of Iowa.

Dean A. Wilke 7/10/07
 Dean A. Wilke Date

License number 17048
 My license renewal date is December 31, 2007
 Pages or sheets covered by this seal: This page only



List Corners to be Indexed			
Corner	Section	Twp.	Range
SE CORNER	3	82N	38W
E1/4 CORNER	3	82N	38W