

Instrument #: 2016-1394
 07/11/2016 09:49:23 AM Total Pages: 1
 PLC - PLAT CORNER CER
 Recording Fee: \$7.00 Transfer Tax: \$0
 Denise Neeves, Recorder, Crawford County Iowa



PREPARED BY - JOSEPH P. RUESCHENBERG - SUNDQUIST ENGINEERING - 120 S. MAIN, DENISON, IOWA 51442 - PHONE (712) 263-8118

**UNITED STATES PUBLIC LAND SURVEY CORNER CERTIFICATE
 OF**

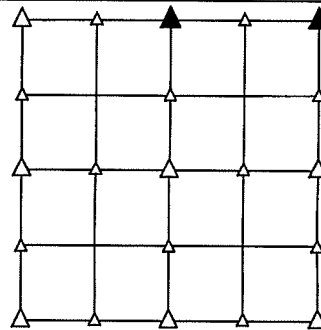
LAND SURVEY MONUMENT SITUATED IN SECTION 13, T 82 N, R 38 W OF
 THE 5TH P.M., CRAWFORD COUNTY, IOWA.

PREVIOUSLY RECORDED IN BOOK _____, PAGE _____, OTHER _____

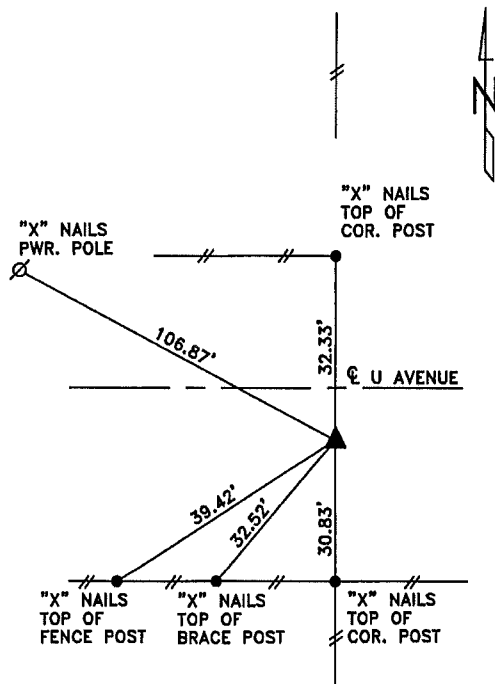
MONUMENT DESCRIPTION AND REMARKS

N1/4 CORNER - FOUND CM W/BRASS CAP 2.0' DEEP WITH 5/8" DIA. IRON PIN ON NO. SIDE OF CM & FLUSH W/TOP OF CM. RAISED WITH 5/8" DIA. X 18" IRON PIN W/ORANGE CAP #14709 0.4' DEEP.

NE CORNER - FOUND 1/2" DIA. IRON PIN 1.0' DEEP IN LINE WITH CENTERLINE OF N-S ROAD. PIN IS IN LINE WITH SOUTH EDGE OF GRAVEL ROAD WEST.

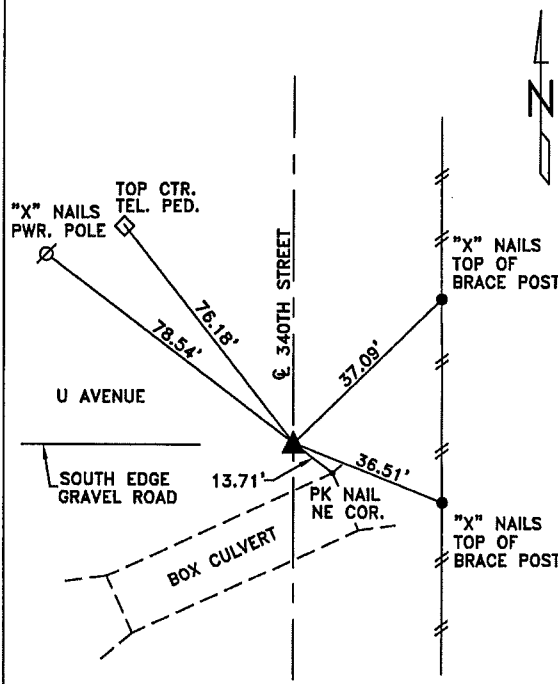


PLAN VIEW SHOWING RELATIVE LOCATION OF MONUMENT AND REFERENCE POINTS.



DISTANCES PLUMB CHAINED

N1/4 CORNER SECTION 13-82-38



DISTANCES PLUMB CHAINED

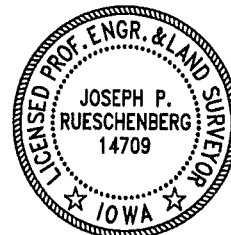
NE CORNER SECTION 13-82-38

I HEREBY CERTIFY THAT THIS LAND SURVEYING DOCUMENT WAS PREPARED AND THE RELATED SURVEY WORK WAS PERFORMED BY ME OR UNDER MY DIRECT PERSONAL SUPERVISION AND THAT I AM A DULY LICENSED LAND SURVEYOR UNDER THE LAWS OF THE STATE OF IOWA.

Joseph P. Rueschenberg 7-1-2016
 JOSEPH P. RUESCHENBERG DATE

IA LICENSE NO. 14709

EXP. DATE DECEMBER 31, 2016



SE PROJECT NO. 22416
 DRAWN BY: LLL