

RECORDED mg  
 FILED sy  
 INDEXED g  
 SERIALIZED g

Crawford County Recorder  
 Denise Meeves  
**Fee Book 2009-1119**  
 04/21/2009 @03:10PM  
 PLC PLAT CORNER CER # Pages: 1  
 Book: Page: \$7.00  
 Total Fees:

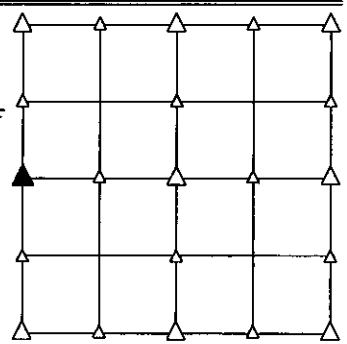
PREPARED BY - JOSEPH P. RUESCHENBERG - SUNDQUIST ENGINEERING - 120 S. MAIN, DENISON, IOWA 51442 - PHONE (712) 263-8118

**UNITED STATES PUBLIC LAND SURVEY CORNER CERTIFICATE  
OF**

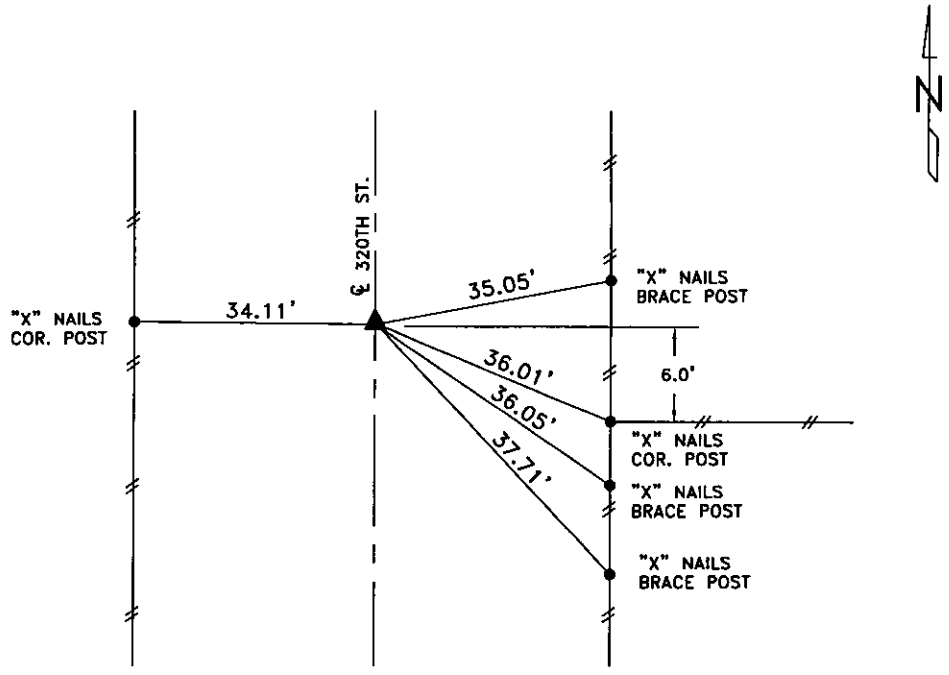
LAND SURVEY MONUMENT SITUATED IN SECTION 14, T 82 N, R 38 W OF  
 THE 5TH P.M., CRAWFORD COUNTY, IOWA.  
 PREVIOUSLY RECORDED IN BOOK \_\_\_\_\_, PAGE \_\_\_\_\_, OTHER \_\_\_\_\_

**MONUMENT DESCRIPTION AND REMARKS**

W1/4 CORNER - FOUND BROKEN CM WITH 1/4" IRON PIN IN CENTER  
 15" DEEP, SET 5/8" DIA. IRON PIN ON SO. SIDE OF  
 CM FOR LOCATING, SET 5/8" DIA. X 9" IRON PIN  
 W/ORANGE CAP #14709 0.4' DEEP DIRECTLY OVER  
 CM.



PLAN VIEW SHOWING RELATIVE LOCATION OF MONUMENT AND REFERENCE POINTS.

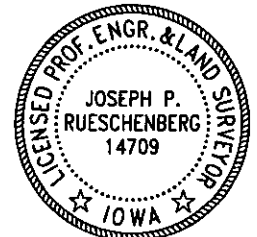


DISTANCES PLUMB CHAINED

**W1/4 CORNER SECTION 14-82-38**

I HEREBY CERTIFY THAT THIS LAND SURVEYING DOCUMENT WAS PREPARED  
 AND THE RELATED SURVEY WORK WAS PERFORMED BY ME OR UNDER MY  
 DIRECT PERSONAL SUPERVISION AND THAT I AM A DULY LICENSED LAND  
 SURVEYOR UNDER THE LAWS OF THE STATE OF IOWA.

Joseph P. Rueschenberg APR 21 2009  
 JOSEPH P. RUESCHENBERG DATE  
 IA LICENSE NO. 14709 EXP. DATE DECEMBER 31, 2010



SE PROJECT NO. 21109  
 DRAWN BY: LLL