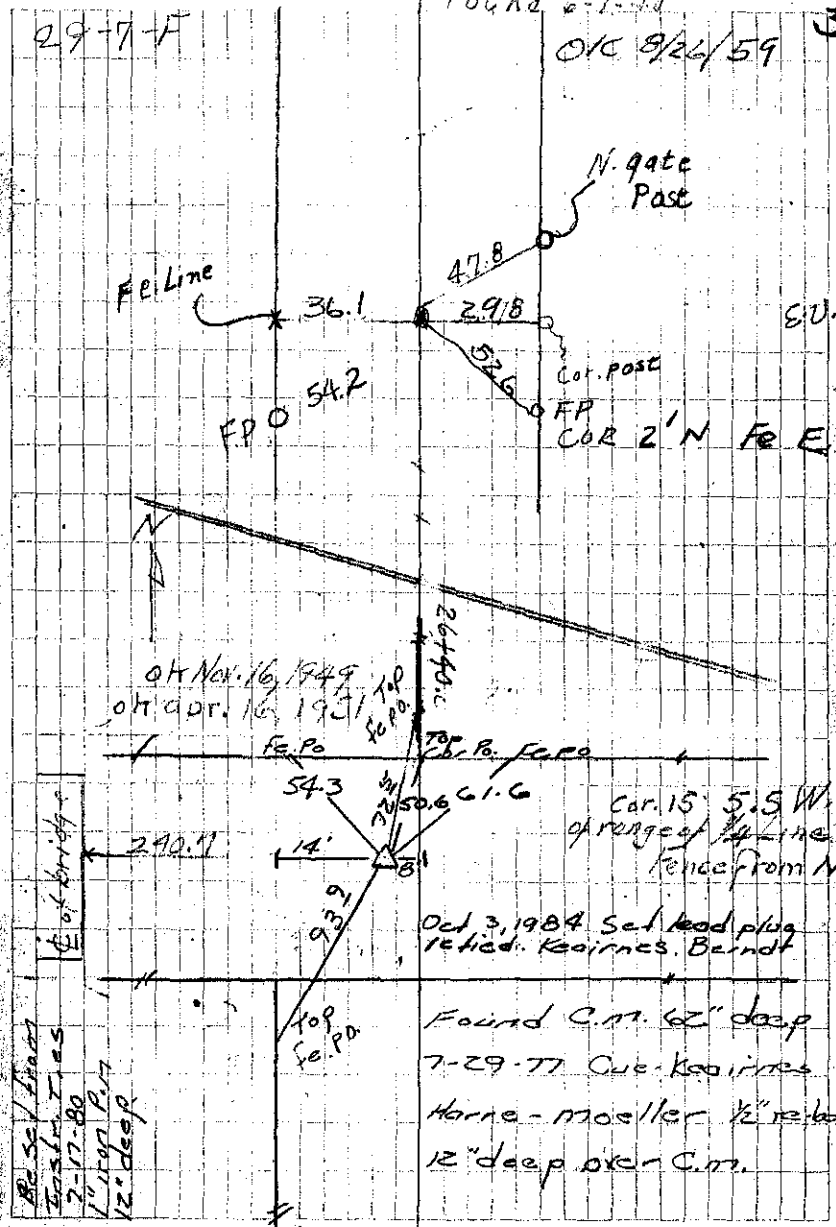


1-6
 Found 1 rock 6"x8"x12" at a depth
 of 24" Lowered and Set C.M.

Ties from 2 SPIKES in Cor Posts
 24.2 E. from fe. line
 28.7 W. " " cor Post
 32.8 SW. " " N. gate Post

36 Found 1 limestone 6"x12"x16"
 1 and rotted remains of old
 wood stake at a depth of 2.6
 Lowered and set C.M.
 Set 2"x1" hub over C.M. (C.M. 40' deep)

Ties:-
 240.7 E from E of bridge
 38.8 S " " cor post
 31.9 N " " hedge row
 41.8 NE " " cor post to S.



Found 6-1-77
 OK 8/24/59

3
 3
 E.U.
 E.U.
 E.U.

RE set lines
 East ties
 2-21-80
 1" dia. 12" deep