

FILED DENISE MEEVES, RECORDER
CRAWFORD COUNTY

INDEXED
FOLLOW UP
PROCESSED

2000 OCT -6 AM 9:45

200-2553

INST. NO.
DENISE MEEVES, RECORDER
Denise Meeves
FEE \$ 6.00

WARDER C. HILLHOUSE, JR. MHF ENGINEERING P.C. 300 W. MCKINLEY JEFFERSON, IA. (515)386-4101

UNITED STATES PUBLIC LAND SURVEY CORNER CERTIFICATE OF

Land Survey Monuments in Section 22, Township 82, Range 38, of the Fifth Principal Meridian, CRAWFORD County, Iowa.

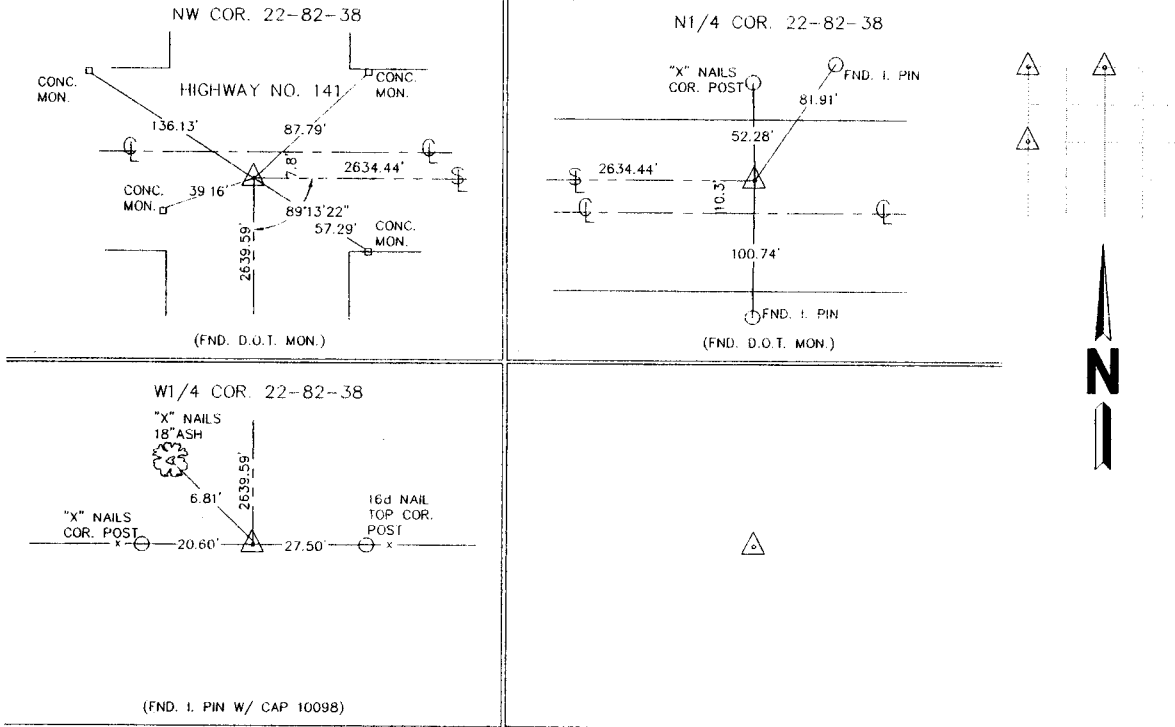
Previously recorded in _____ in County Recorder's Office.
(book, page, document number, etc.)

(Show reason for preparing this certificate, the evidence and detailed procedures used in establishing the corner positions and monumentation found or placed.)

Monument Description and Remarks: _____

PLAN - VIEW

(Show a minimum of three reference ties to durable physical objects, relevant monuments and physical conditions that will enable recovery of the corner.)

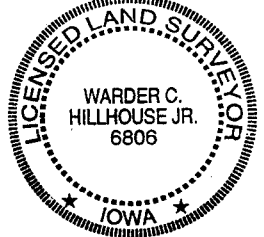


I hereby certify that land surveying document and the related survey work was performed by me or under my direct personal supervision and that I am a duly licensed land surveyor under the laws of the state of Iowa.

Signature: Warder C. Hillhouse, Jr.
Name typed or printed: Warder C. Hillhouse, Jr.

Date: 10/4/2000 Lic. No. 6806

License Renewal Dec. 31, 2001
Date Surveyed: 09/00



List Corners to be Indexed			
Corners	Section	Twp	Range
NW COR.	22	82	38
N1/4 COR.	22	82	38
W1/4 COR.	22	82	38

File No. 00178-1

M.H.F. ENGINEERING, P.C.
ENGINEERS - LAND SURVEYORS
Jefferson, Iowa 50129 Ph. (515)386-4101