

REC004306



INDEXED  
FOLLOW UP *ME*  
PROOFED *DM*  
SCANNED *g*

Crawford County Recorder Denise Meeves  
FEE BOOK 2004-3465 12/29/2004 @ 02:12PM  
PLC PLAT CORNER CERBook: Page:04-3465 #: 1  
Total Fees: \$7.00

PREPARED BY - TERENCE E. CRAWFORD - SUNDQUIST ENGINEERING - 120 S. MAIN, DENISON, IOWA 51442 - PHONE (712) 263-8118

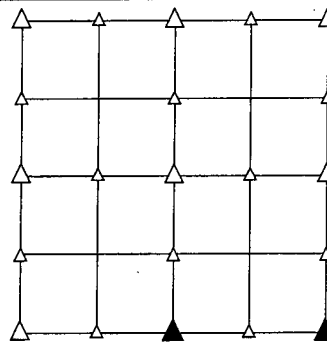
### UNITED STATES PUBLIC LAND SURVEY CORNER CERTIFICATE OF

LAND SURVEY MONUMENT SITUATED IN SECTION 23, T 82 N, R 38 W OF  
THE 5TH P.M., CRAWFORD COUNTY, IOWA.  
PREVIOUSLY RECORDED IN BOOK \_\_\_\_\_, PAGE \_\_\_\_\_, OTHER \_\_\_\_\_

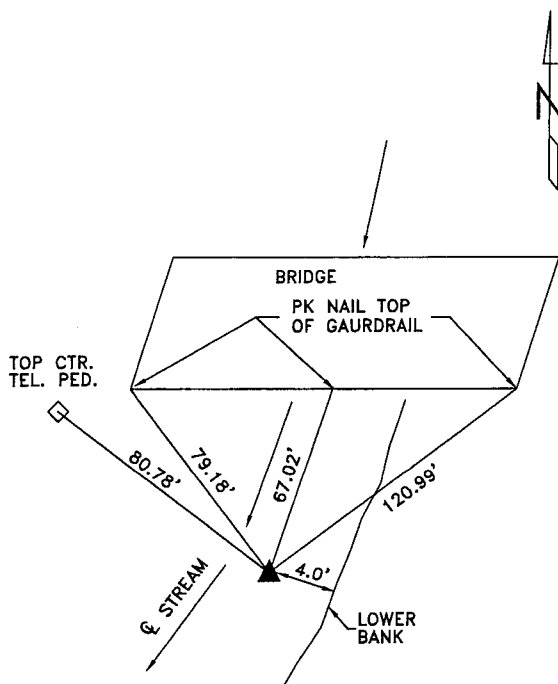
#### MONUMENT DESCRIPTION AND REMARKS

S1/4 CORNER - SET 5/8" DIA. X 18" IRON PIN W/YELLOW  
CAP #8893 FLUSH, CORNER IS 1.0' EAST OF EAST  
EDGE OF WATERLINE, SET ON LINE AND AT SPLIT  
BETWEEN SE COR. & SW COR. OF SECTION 23.

SE CORNER - FOUND CM 0.25' DEEP.

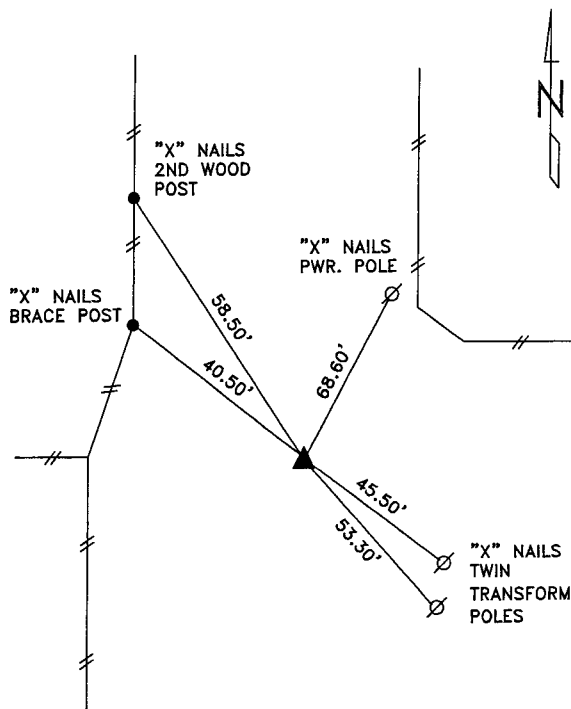


#### PLAN VIEW SHOWING RELATIVE LOCATION OF MONUMENT AND REFERENCE POINTS.



DISTANCES PLUMB CHAINED

S1/4 CORNER SECTION 23-82-38



DISTANCES SLOPE CHAINED

SE CORNER SECTION 23-82-38

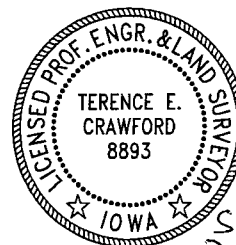
I HEREBY CERTIFY THAT THIS LAND SURVEYING DOCUMENT WAS PREPARED  
AND THE RELATED SURVEY WORK WAS PERFORMED BY ME OR UNDER  
MY DIRECT SUPERVISION AND THAT I AM A DULY LICENSED LAND  
SURVEYOR UNDER THE LAWS OF THE STATE OF IOWA.

*Terence E. Crawford*

DEC 23 2004

TERENCE E. CRAWFORD  
IA LICENSE NO. 8893

DATE  
EXP. DATE DECEMBER 31, 2005



SE Project# 24604  
- Drawn By: LLL