


INDEXED mw  
 FILED UP \_\_\_\_\_  
 PROVED \_\_\_\_\_  
 SCANNED \_\_\_\_\_

00   
 Crawford County Recorder Denise Meeves  
 Fee Book 2007-0946 REC014090  
 04/11/2007 8:127AM # Pages 1  
 PLC PLAT CORNER CER  
 Total Fees: \$7.00

WILKE LAND SURVEYING INC. 401 1800th Street Panama, Iowa 51562 (712)489-2898

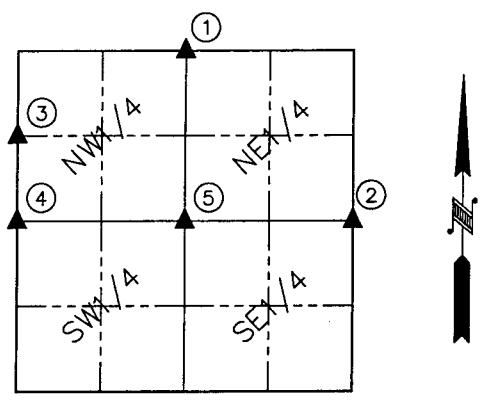
# UNITED STATES PUBLIC LAND SURVEY CORNER CERTIFICATE

SECTION 30 TOWNSHIP 82N RANGE 38W COUNTY CRAWFORD

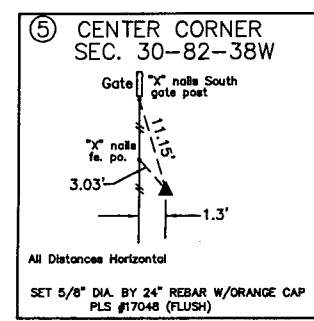
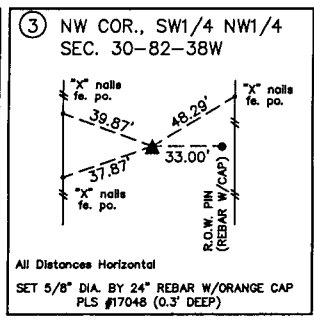
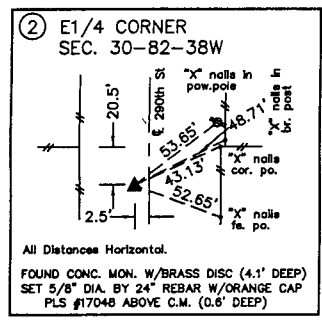
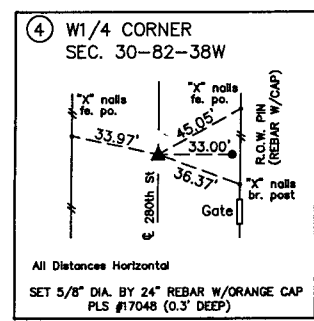
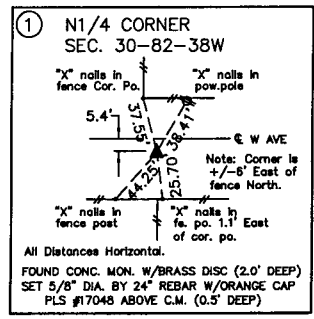
Certificate Prepared For: Survey of the North & South lines of the  
S1/2 NW1/4 of Section 30

**Monument Description and Remarks:**

- ① - Found conc. mon. w/brass disc (2.0' deep) using reference information from the County Engineer's Office. Set rebar along the North edge for detection purposes only. Set 5/8" dia. by 15" rebar w/orange cap PLS #17048 above at (0.5' deep)
- ② - Found conc. mon. w/brass disc (4.1' deep) using 1941 chaining notes from the County Engineer's Office. Set rebar along the North edge for detection purposes. Set 5/8" by 24" rebar w/orange cap PLS #17048 above conc. mon. at (0.6' deep)
- ③ - Set 5/8" by 24" rebar w/orange cap PLS #17048 on line at the midpoint between the Northwest Corner and the W1/4 Corner of Section 30.
- ④ - No record of monument being set at this corner in 1941. Searched with metal detector and found nothing. Set 5/8" dia by 24" rebar at split of road right-of-way fences and equal distances from the Northwest Corner and Southwest Corner of Section 30.
- ⑤ - Set 5/8" dia by 24" rebar w/orange cap PLS #17048 (flush) at intersection point of lines connecting opposite 1/4 Corners.



List Corners to be Indexed			
Corner	Section	Twp.	Range
N1/4 CORNER	30	82N	38W
E1/4 CORNER	30	82N	38W
NW CORNER			
SW1/4 NW1/4	30	82N	38W
CENTER CORNER	30	82N	38W



I hereby certify that this land surveying document was prepared and the related survey work was performed by me or under my direct personal supervision and that I am a duly licensed Land Surveyor under the laws of the State of Iowa.

Dean A. Wilke 4/10/07  
 Dean A. Wilke /Date

License number 17048  
 My license renewal date is December 31, 2007  
 Pages or sheets covered by this seal: This page only

