

2001 NOV 9 PM 3:32

2001-3242

DEPT. OF  
DENISE MEWES, RECORDER

Denise Mewes  
#60 Mary Gitten, Deputy

PREPARED BY - TERENCE E. CRAWFORD - SUNDQUIST ENGINEERING - 120 S. MAIN, DENISON, IOWA 51442 - PHONE (712)263-8118

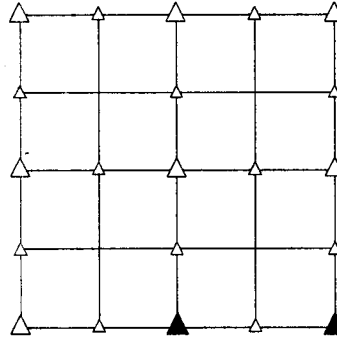
# UNITED STATES PUBLIC LAND SURVEY CORNER CERTIFICATE OF

LAND SURVEY MONUMENT SITUATED IN SECTION 31, T 82 N, R 38 W OF  
THE 5TH P.M., CRAWFORD COUNTY, IOWA.  
PREVIOUSLY RECORDED IN BOOK \_\_\_\_\_, PAGE \_\_\_\_\_, OTHER \_\_\_\_\_

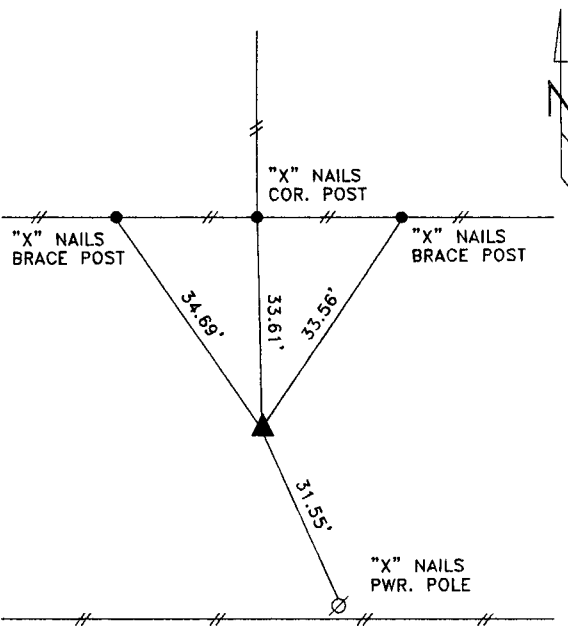
## MONUMENT DESCRIPTION AND REMARKS

S1/4 CORNER - FOUND 5/8" DIA. IRON PIN 6" DEEP

SE CORNER - FOUND 5/8" DIA. IRON PIN 6" DEEP

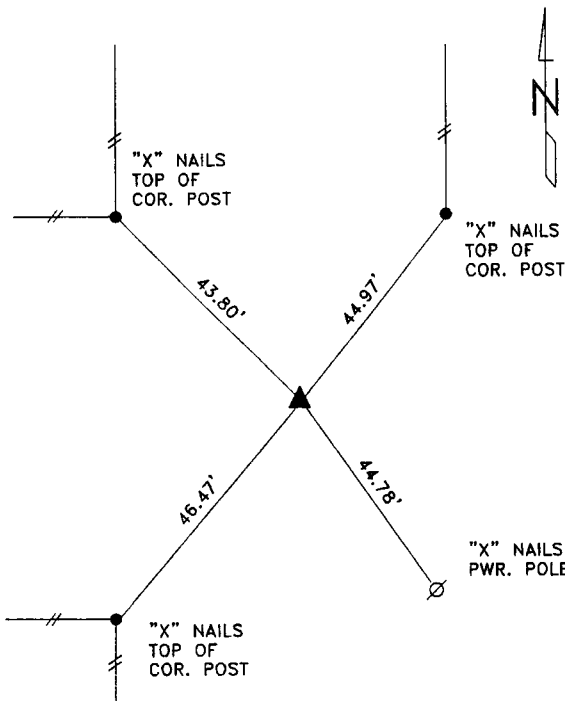


## PLAN VIEW SHOWING RELATIVE LOCATION OF MONUMENT AND REFERENCE POINTS.



DISTANCES SLOPE CHAINED

S1/4 CORNER SECTION 31-82-38



DISTANCES SLOPE CHAINED

SE CORNER SECTION 31-82-38

I HEREBY CERTIFY THAT THIS LAND SURVEYING DOCUMENT WAS PREPARED  
AND THE RELATED SURVEY WORK WAS PERFORMED BY ME OR UNDER  
MY DIRECT SUPERVISION AND THAT I AM A DULY LICENSED LAND  
SURVEYOR UNDER THE LAWS OF THE STATE OF IOWA.

*Terence E. Crawford*

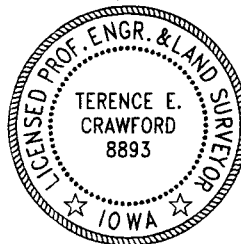
OCT 18 2001

TERENCE E. CRAWFORD

DATE

IOWA LICENSE NO. 8893

EXP. DATE DECEMBER 31, 2001



SE PROJECT NO. 25301  
DRAWN BY: LLL