



INDEXED MB  
FOLLOW UP MB  
PROOFED MB  
SCANNED MB

PREPARED BY: MICKAEL BERNDT  
CRAWFORD COUNTY ENGINEERS OFFICE - COURTHOUSE - DENISON, IA. - 712-263-2449

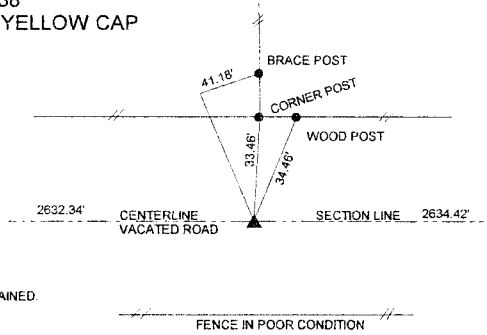
# UNITED STATES PUBLIC LAND SURVEY CORNER CERTIFICATE OF

## LAND SURVEY MONUMENT SITUATED IN NISHNABOTNA TOWNSHIP, THE NORTH 1/4 CORNER OF SECTION 31, T-82N, R-38W OF THE 5TH P.M. CRAWFORD COUNTY, IOWA.

### MONUMENT DESCRIPTION AND REMARKS

NORTH 1/4 CORNER SEC. 31-82-38  
THE CORNER WAS DUG FOR IN 1939 AND NOT LOCATED DUE TO THE FACT THAT IT FELL IN A 6 FT. CUT AREA.  
IN THE LATE 1800'S A ROAD WAS ESTABLISHED ON THE SECTION LINE AND IT WAS VACATED ON 1-29-02  
SUPERVISOR'S BOOK I-1 P.212. I LOCATED THE ORIGINAL FENCE LINES AND THE CENTERLINE OF THE VACATED  
ROAD THAT HAD NOT BEEN OBLITERATED. I SPLIT THE FENCES AND SET THE CORNER IN LINE WITH THE PROPER  
FENCE LINE TO THE NORTH, WHICH HAS BEEN IN EXISTENCE FOR OVER 50 YEARS. THIS SPLIT FELL WITHIN  
1 FOOT OF THE SPLIT OF THE OVERALL MILE.

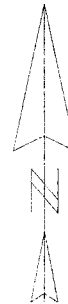
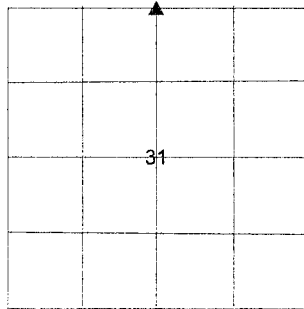
NORTH 1/4 CORNER SEC. 31-82-38  
SET 1/2" REBAR 18" LONG WITH YELLOW CAP  
#14808 8" DEEP



ALL DISTANCES ARE PLUMB CHAINED.  
ALL TIES ARE "X" NAILS



CORNER: NORTH 1/4  
SECTION: 31  
TOWNSHIP: 82N  
RANGE: 38W



I HEREBY CERTIFY THAT THIS LAND SURVEYING DOCUMENT WAS PREPARED  
AND THE RELATED SURVEY WORK WAS PERFORMED BY ME OR UNDER MY  
DIRECT PERSONAL SUPERVISION AND THAT I AM A DULY LICENSED LAND  
SURVEYOR UNDER THE LAWS OF THE STATE OF IOWA.

*Mickael F. Berndt*  
MICKAEL F. BERNDT

IA. LICENSE NO. 14808

7-1-04  
DATE

EXP. DATE 12-31-04

