

FILED DENISON IOWA  
 CRAWFORD COUNTY  
 2003 AUG -5 PH 3:51  
 2003-3019  
 DENISE MEEVES  
 MARY GIBSON, Deputy

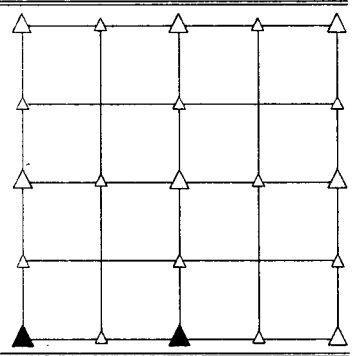
PREPARED BY - TERENCE E. CRAWFORD - SUNDQUIST ENGINEERING - 120 S. MAIN, DENISON, IOWA 51442 - PHONE (712) 263-8118

## UNITED STATES PUBLIC LAND SURVEY CORNER CERTIFICATE OF

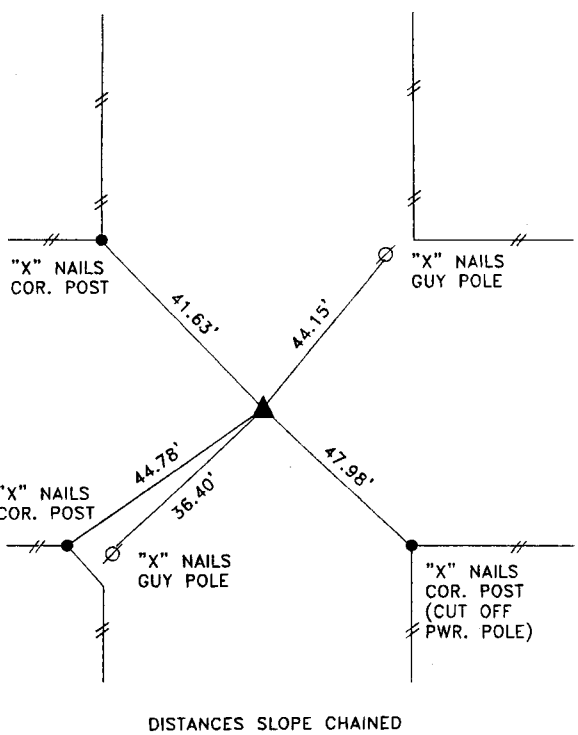
LAND SURVEY MONUMENT SITUATED IN SECTION 28, T 82 N, R 38 W OF  
 THE 5TH P.M., CRAWFORD COUNTY, IOWA.  
 PREVIOUSLY RECORDED IN BOOK \_\_\_\_\_, PAGE \_\_\_\_\_, OTHER \_\_\_\_\_

### MONUMENT DESCRIPTION AND REMARKS

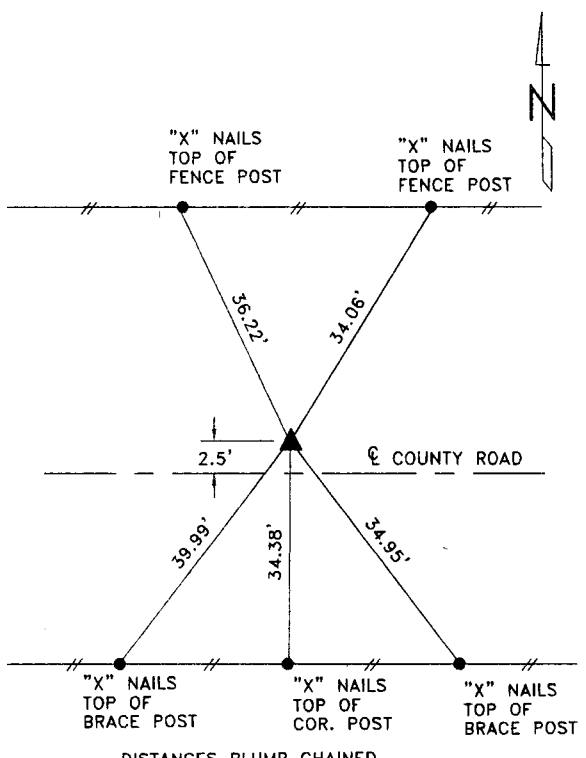
SW CORNER - FOUND 1/2" BOLT 12" DEEP.  
 S1/4 CORNER - THIS CORNER WAS NOT PREVIOUSLY SET, SET 5/8" DIA. X 18" IRON PIN W/YELLOW CAP #8893, 5" DEEP, SET FROM LOCAL EVIDENCE & CHECKED DISTANCES BETWEEN SW COR. AND SE COR. OF SECTION 28.



### PLAN VIEW SHOWING RELATIVE LOCATION OF MONUMENT AND REFERENCE POINTS.



SW CORNER SECTION 28-82-38

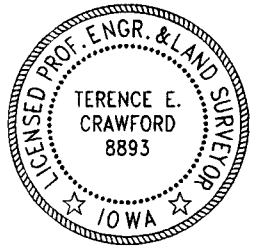


S1/4 CORNER SECTION 28-82-38

I HEREBY CERTIFY THAT THIS LAND SURVEYING DOCUMENT WAS PREPARED AND THE RELATED SURVEY WORK WAS PERFORMED BY ME OR UNDER MY DIRECT SUPERVISION AND THAT I AM A DULY LICENSED LAND SURVEYOR UNDER THE LAWS OF THE STATE OF IOWA.

*Terence E. Crawford*      AUG 01 2003  
 TERENCE E. CRAWFORD      DATE

IA LICENSE NO. 8893      EXP. DATE DECEMBER 31, 2003



SE PROJECT NO. 24003  
 DRAWN BY: LLL