

INDEXED
 RECORDED
 PLATED
 SERIALIZED

Crawford County Recorder
 Denise Meeves
Fee Book 2010-2536
 11/17/2010 @12:06PM
 PLC PLAT CORNER CER # Pages: 1
 Book: Page: \$0.00
 Total Fees:

PREPARED BY: MICKAEL F. BERNDT - CRAWFORD COUNTY ENGINEER'S OFFICE - COURTHOUSE - DENISON, IA. - 712-263-2449

**UNITED STATES PUBLIC LAND SURVEY CORNER CERTIFICATE
 OF**

**LAND SURVEY MONUMENT SITUATED IN NISHNABOTNA TOWNSHIP, THE NW CORNER
 OF SECTION 35, T-82N, R-38W OF THE FIFTH P.M. CRAWFORD COUNTY, IOWA.**

PREVIOUSLY RECORDED AS:

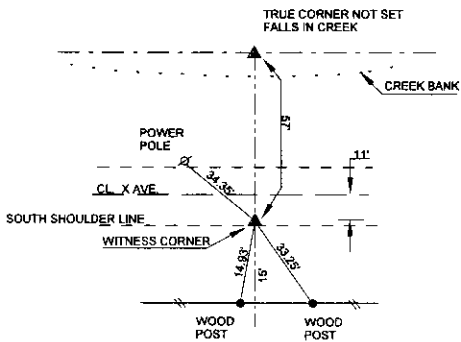
MONUMENT DESCRIPTION AND REMARKS

NW COR. OF SEC. 35-82-38

DATE: 11/2/10

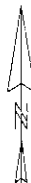
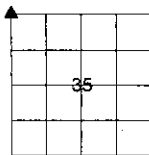
FOUND WITNESS CORNER (5/8" REBAR 0.4' DEEP)
 ACCORDING TO THE NISHNABOTNA CORNER BOOK PAGE 68 LOCATED IN THE COUNTY ENGINEERS
 OFFICE THE TRUE SECTION CORNER IS LOCATED 57' NORTH OF THE WITNESS CORNER. (IT IS
 ASSUMED THAT THE TRUE CORNER IS LOCATED ON THE EXTENSION OF THE LINE THAT PASSES
 THROUGH THE W1/4 COR. OF SEC. 35 AND THE FOUND WITNESS CORNER.)
 TIED OFF THE WITNESS CORNER.

NW COR. OF SEC. 35-82-38



ALL DISTANCES ARE SLOPED CHAINED
 ALL TIES ARE "X" NAILS UNLESS NOTED.

CORNER: NW COR.
 SECTION: 35
 TOWNSHIP: 82N
 RANGE: 38W



CERTIFICATION:

I HEREBY CERTIFY THAT THIS LAND SURVEYING DOCUMENT WAS PREPARED AND THE RELATED
 SURVEY WORK WAS PERFORMED BY ME OR UNDER MY DIRECT PERSONAL SUPERVISION AND
 THAT I AM A DULY LICENSED LAND SURVEYOR UNDER THE LAWS OF THE STATE OF IOWA.

Mickael F. Berndt 11-12-10
 Signature Date of Survey

MICKAEL F. BERNDT 14808 Dec. 31, 2010
 Typed Name L.S. No. License Renewal Date

Pages covered by this seal 1

