

INDEXED  
 FOLLOW UP  
 PROOFED  
 SCANNED

Crawford County Recorder  
 Denise Meeves  
**Fee Book 2013-0246**  
 02/05/2013 @ 11:19AM  
 PLC PLAT CORNER CER  
 Book: Page: # Pages: 1  
 Total Fees: \$7.00

This document prepared by : Semke & Associates - 712-792-2276  
 Micheal G. Semke, L.S. #10318 - 716 N. Crawford St. - Carroll, Iowa

UNITED STATES PUBLIC LAND SURVEY CORNER CERTIFICATE of  
 Land Survey Monuments situated in Section 35, Township 82 North, Range 38  
 West of the Fifth Principal Meridian, Crawford County, Iowa.  
 Previously recorded in Book , Page in County Recorder's Office.

(Show reason for preparing this certificate, the evidence and detailed procedures used in establishing the corner positions and monumentation found or placed.)

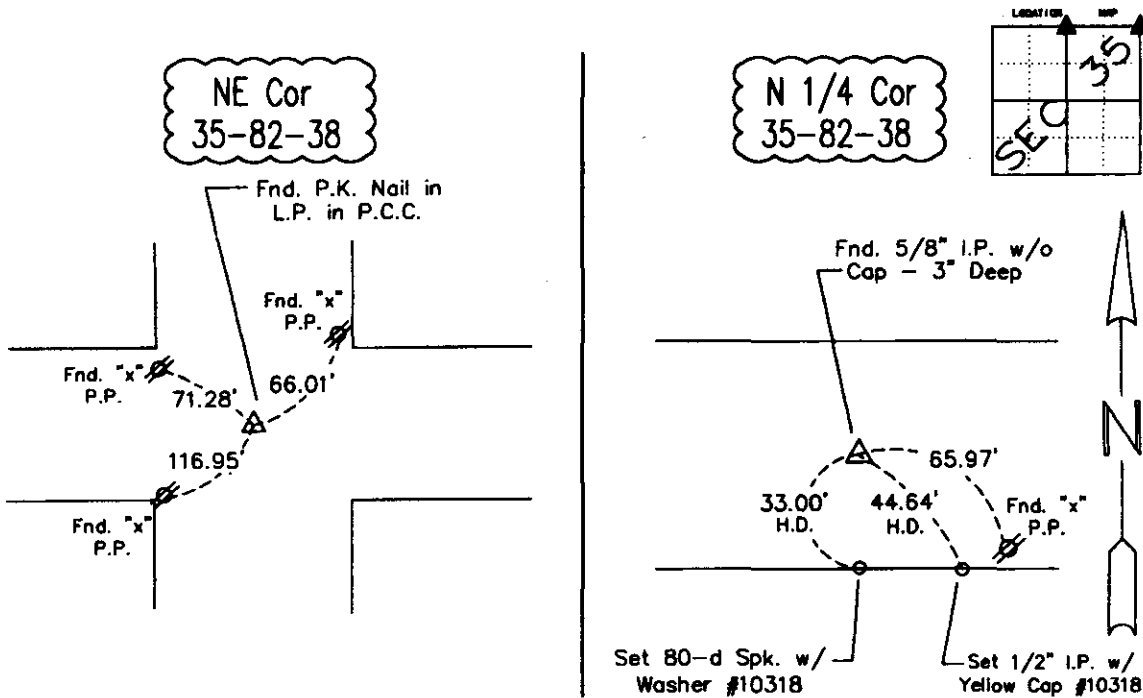
N 1/4 Corner Found 5/8" I.P. w/o Cap 3" Deep

NE Corner Found P.K. Nail in Lead Plug in P.C.C.  
Approx. 0.3' East of CL

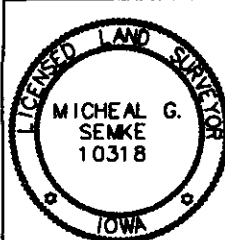
Note: All pins set are 1/2" x 24" Rerod w/Yellow Cap #10318 unless noted otherwise.

PLAN - VIEW

(Show a minimum of three reference ties to durable physical objects, relevant monuments and physical conditions that will enable recovery of the corner.)



Note: All ties slope chained unless noted otherwise - H.D. = Horz. Dist.



I HEREBY CERTIFY THAT THIS LAND SURVEYING DOCUMENT WAS PREPARED AND RELATED SURVEY WORK WAS PERFORMED BY ME OR UNDER MY DIRECT PERSONAL SUPERVISION AND THAT I AM A DULY LICENSED LAND SURVEYOR UNDER THE LAWS OF THE STATE OF IOWA.

*Micheal G. Semke* 1/31/13  
 Signature Date

Micheal G. Semke, L.S. No. 10318

Printed of Typed Name

Pages or sheets covered by this seal THIS PAGE My license renewal date is 12/31/13.

List Corners to be Indexed

Corners	Section	Top	Range
N 1/4 Cor	25	82	38
S 1/4 Cor	28	82	38
NE Cor	35	82	38
SE Cor	28	82	38
SW Cor	25	82	38
NW Cor	38	82	38