



REC015487
 Crawford County Recorder
 Denise Meeves
Fee Book 2007-2193

INDEXED *mm*
 FOLLOW UP _____
 PROOFED *mm*
 SCANNED _____

08/13/2007 @10:14AM
 PLC PLAT CORNER CER
 Book: _____ Page: _____ # Pages: 1
 Total Fees: \$7.00

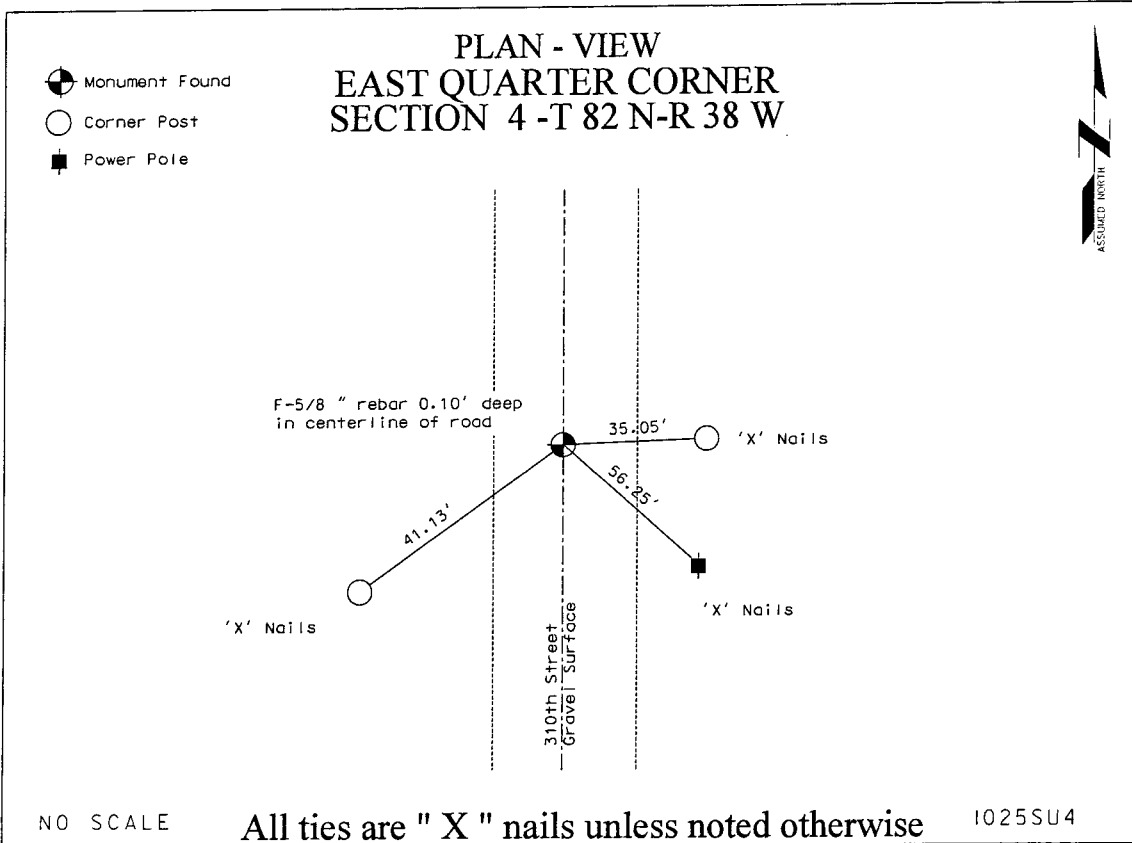
George A. Parris, PE/LS, JEO Consulting Group, Inc., 724 Simon Avenue, Carroll, Iowa 51401, 712-792-9711

**UNITED STATES PUBLIC LAND SURVEY
 CORNER CERTIFICATE**

Land Survey Monument Situated in Section 4
 Township 82 North Range 38 West, of the 5th P.M.
 Crawford County, Iowa.

Monument Description and Remarks:

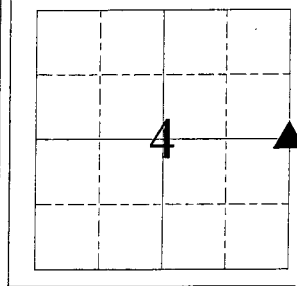
Found $5/8$ " rebar 0.10' deep in center line of 310th Street. Corner was used in a boundary survey in the northeast quarter of section 4.



I hereby certify that this land surveying document was prepared and the related survey work was performed by me or under my direct personal supervision and that I am a duly licensed Land Surveyor under the laws of the State of Iowa.

George A. Parris 8.6.7
 Signature Date
 GEORGE A. PARRIS
 Printed or Typed Name
 12108
 My license renewal date is: December 31, 2008
 Pages or sheets covered by this seal:
 THIS SHEET

DRAWN BY: AME QA/QC: GAP



List Corner to be Indexed

Corner	Section	Twp	Range
E	4	82	38

JEO
 Consulting Group, Inc.
 724 Simon Ave.
 Carroll, Iowa
 712.792.9711

Corporate Office
 402.443.4461
 PO Box 287
 Wahoo, Nebraska 68066

Branch Offices
 Hastings, Nebraska
 402.462.5637
 Lincoln, Nebraska
 402.425.3889
 Nebraska City, Nebraska
 402.873.8766
 Norfolk, Nebraska
 402.371.6416
 New Richmond, Wisconsin
 715.246.4319
 www.jeo.com