

INDEXED
 FOLLOW UP
 RECORDED
 SCHEDULED *ME*



Crawford County Recorder Denise Meeves
 Fee Book 2007-1625 REC014833
 06/15/2007 @1125AM # Pages 1
 PLC PLAT CORNER CER
 Total Fees: \$0.00

PREPARED BY: MICKAEL F. BERNDT - CRAWFORD COUNTY ENGINEER'S OFFICE - COURTHOUSE - DENISON, IA. - 712-263-2449

UNITED STATES PUBLIC LAND SURVEY CORNER CERTIFICATE
 OF

LAND SURVEY MONUMENT SITUATED IN NISHNABOTNA TOWNSHIP, THE NORTH 1/4
 CORNER OF SECTION 9, T-82N, R-38W OF THE FIFTH P.M. CRAWFORD COUNTY, IOWA.

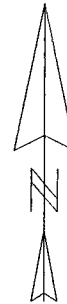
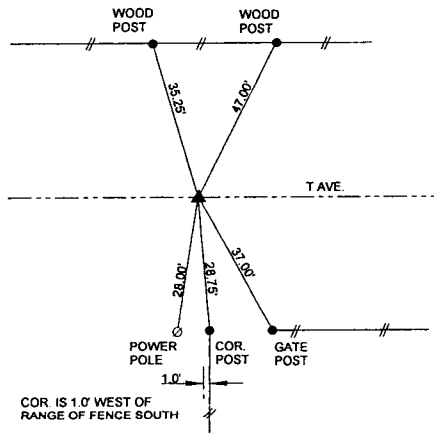
PREVIOUSLY RECORDED AS NO.

MONUMENT DESCRIPTION AND REMARKS

NORTH 1/4 CORNER SEC. 9-82-38

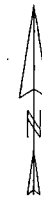
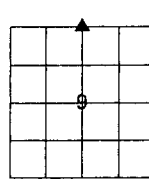
FOUND CONCRETE MONUMENT 15" DEEP. TOP IS BROKEN OFF.

NORTH 1/4 CORNER SEC. 9-82-38



ALL DISTANCES ARE SLOPED CHAINED
 ALL TIES ARE "X" NAILS UNLESS NOTED.

CORNER: NORTH 1/4
 SECTION: 9
 TOWNSHIP: 82N
 RANGE: 38W



<p>CERTIFICATION:</p> <p>I HEREBY CERTIFY THAT THIS LAND SURVEYING DOCUMENT WAS PREPARED AND THE RELATED SURVEY WORK WAS PERFORMED BY ME OR UNDER MY DIRECT PERSONAL SUPERVISION AND THAT I AM A DULY LICENSED LAND SURVEYOR UNDER THE LAWS OF THE STATE OF IOWA.</p>			
<p><i>Mickael F. Berndt</i></p> <p>Signature</p>	<p>6-15-07</p> <p>Date of Survey</p>		
<p>MICKAEL F. BERNDT</p> <p>Typed Name</p>	<p>14808</p> <p>L.S. No.</p>	<p>Dec. 31, 2008</p> <p>License Renewal Date</p>	
<p>Pages covered by this seal <u>1</u></p>			
<p></p>			