

INDEXED
 FILED
 RECORDED
 2014

Instrument #: 2014-1076
 05/30/2014 11:39:51 AM Total Pages: 1
 PLC PLAT CORNER CER
 Recording Fee: \$7.00 Transfer Tax: \$0
 Denise Heeves, Recorder, Crawford County Iowa



WILKE LAND SURVEYING INC. 401 1800th Street Panama, Iowa 51562 (712)489-2898

UNITED STATES PUBLIC LAND SURVEY CORNER CERTIFICATE

SECTION 11 TOWNSHIP 85N RANGE 39W COUNTY CRAWFORD

Reason for Certificate: (No record Certificate)

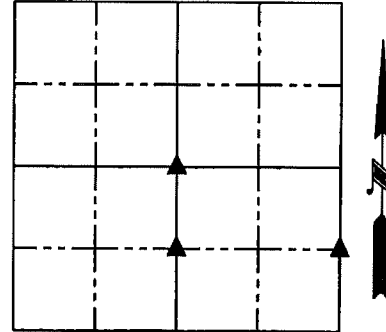
Monument Description and Remarks:

CENTER - Set 5/8" diameter by 24" long rebar with orange cap PLS #17048 on line between the N1/4 Corner and the S1/4 Corner, and in line with fences East & West. Corner is located +/- 0.7' Northwest of a thin rotted corner post with fences East, South, and West.

SW CORNER N1/2 SE1/4 - Set 5/8" diameter by 24" long rebar with orange cap PLS #17048 on line between the Center and the S1/4 Corner, and in line with a fence going East. Location fits well with fences North and South approximately 500' each direction.

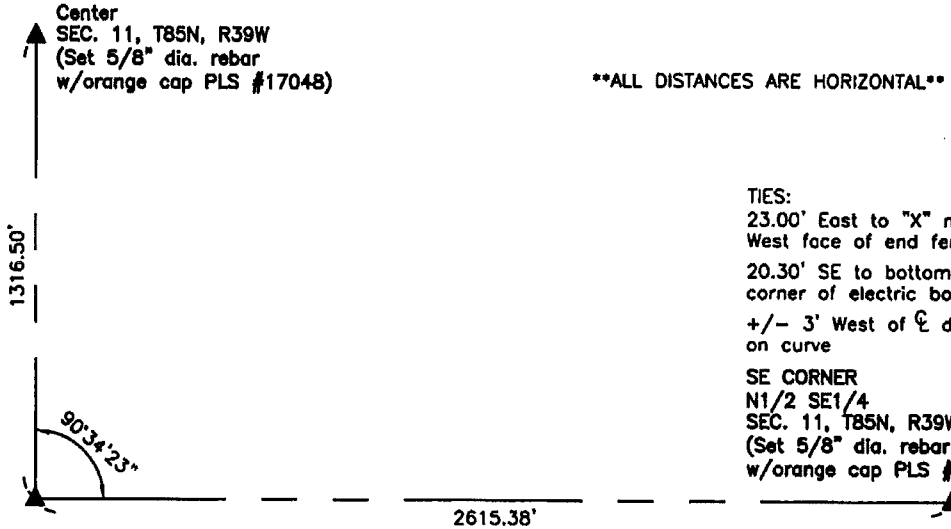
SE CORNER N1/2 SE1/4 - Set 5/8" diameter by 24" long rebar with orange cap PLS #17048 on line between the calculated E1/4 Corner and the SE Corner, and at a split of the fences going East & West. Location fit well with the centerline of the county road South.

SECTION 11



Center
 SEC. 11, T85N, R39W
 (Set 5/8" dia. rebar
 w/orange cap PLS #17048)

ALL DISTANCES ARE HORIZONTAL

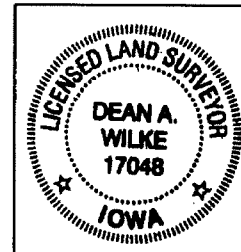


TIES:
 23.00' East to "X" nails in West face of end fence post
 20.30' SE to bottom SW corner of electric box
 +/- 3' West of C dirt road on curve

SE CORNER
 N1/2 SE1/4
 SEC. 11, T85N, R39W
 (Set 5/8" dia. rebar
 w/orange cap PLS #17048)

SW CORNER
 N1/2 SE1/4
 SEC. 11, T85N, R39W
 (Set 5/8" dia. rebar
 w/orange cap PLS #17048)

TIES:
 3.67' East to "X" nails in West face of corner post
 5.94' NE to "X" nails in SW face of fence post



List Corners to be Indexed			
Corner	Section	Twp.	Range
CENTER	11	85N	39W
SW CORNER N1/2 SE1/4	11	85N	39W
SE CORNER N1/2 SE1/4	11	85N	39W

I hereby certify that this land surveying document was prepared and the related survey work was performed by me or under my direct personal supervision and that I am a duly licensed Land Surveyor under the laws of the State of Iowa.

Dean A. Wilke 5/19/14
 Dean A. Wilke Date

License number 17048

My license renewal date is December 31, 2015

Pages or sheets covered by this seal: This page only