

Instrument #: 2014-0431
 03/05/2014 12:09:57 PM Total Pages: 1
 PLC PLAT CORNER CER
 Recording Fee: \$7.00 Transfer Tax: \$0
 Denise Heeves, Recorder, Crawford County, Iowa

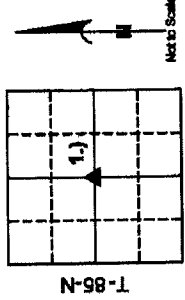
INDEXED BY
 FOLLOW UP
 PROOFED
 SCANNED



PREPARED BY J. SCOTT SHEVEL PLS, 168 GROUP, P.O. BOX 458 1725 N. LAKE AVE. STORM LAKE, IOWA 50688 TELEPHONE (712)732-0292

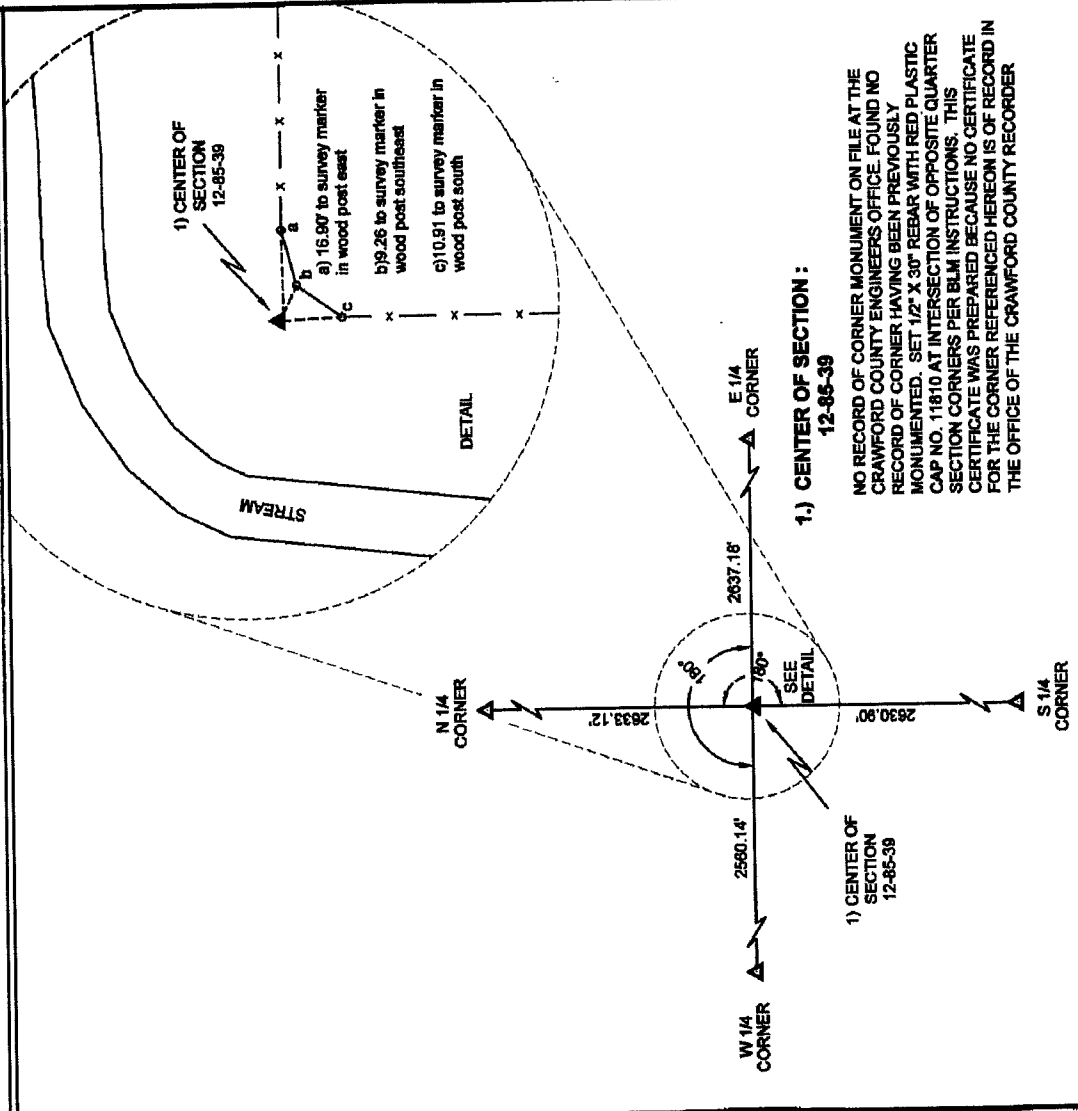
UNITED STATES PUBLIC LAND SURVEY CORNER CERTIFICATE
OF

LAND SURVEY MONUMENTS SITUATED IN SECTION 12
 TOWNSHIP 85 NORTH, RANGE 39 WEST
 OF THE 5TH P.M., CRAWFORD COUNTY, IOWA



R-39-W

- LEGEND OF SYMBOLS AND ABBREVIATIONS**
- ▲ = SECTION CORNER FOUND
 - ▲ = SECTION CORNER SET
 - 2830.30" = MEASURED
 - * = FENCE LINE
 - = SURVEY MARKER 1-1/2" PLASTIC DISK AS SHOWN



1.) CENTER OF SECTION : 12-85-39

NO RECORD OF CORNER MONUMENT ON FILE AT THE CRAWFORD COUNTY ENGINEERS OFFICE. FOUND NO RECORD OF CORNER HAVING BEEN PREVIOUSLY MONUMENTED. SET 1/2" X 30" REBAR WITH RED PLASTIC CAP NO. 11810 AT INTERSECTION OF OPPOSITE QUARTER SECTION CORNERS PER BLM INSTRUCTIONS. THIS CERTIFICATE WAS PREPARED BECAUSE NO CERTIFICATE FOR THE CORNER REFERENCED HEREON IS OF RECORD IN THE OFFICE OF THE CRAWFORD COUNTY RECORDER

I hereby certify that this land surveying document was prepared and the related survey work was performed by me or under my direct personal supervision and that I am a duly licensed Land Surveyor under the laws of the State of Iowa.

J. Scott Shevel
 License Number 11810
 My license renewal date is December 31, 2015
 Pages covered by this seal 1

Date: 3/4/14



List Corners to be Indexed

Corners	Section	Twp.	Rng.
1.) CENTER	12	85	39

PN: 103581
 DRAWN: JSS