

1 NW cor. Sec 12-85-39

12 Using Cor. Bk 10 - P. 7 as reference

Found 1/2" iron witness rod on North side of road of specified measurements.

Did not find wooden stake used as sett. Cor. on South side of road. Holding a chain

over 1/2 mile Cor. post on S side of road and over witness Cor. on N. side, dropped plumb

bob at 40' South of witness Cor. Found this point agreed with a specified measurement from E of Cement Culvert.

Set C.M. at this point

ties from X-SPKS

33.9 South of Cor. post

39.3 SE of tel. pole (#2)

40.1 NE of power pole

34.7 N of Cor. post

334.7 W of E of Cement Culvert

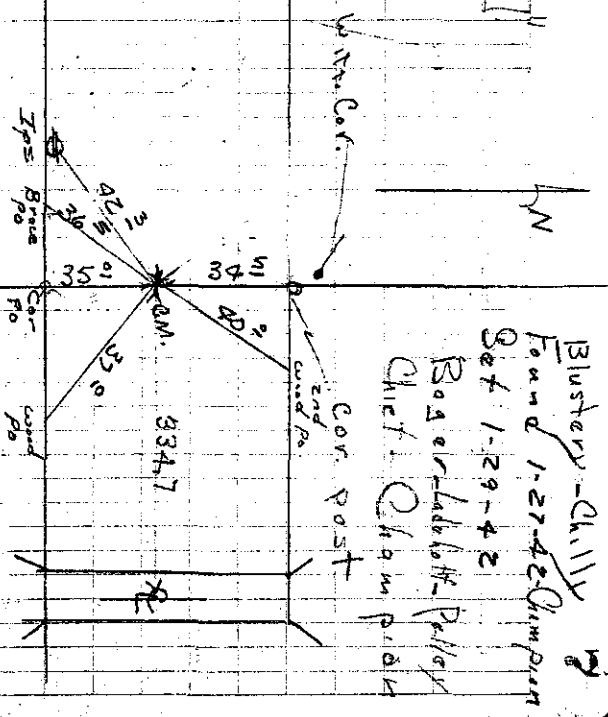
36
1

7.6.39 Dug 3' x 7' x 20' hole

No find

M= 14 P/148

9-7-51



Blustery - Chilly
Found 1-27-42
Set 1-29-42
Boyer-Ladlow-Puller
Chief Chain puller

Found C.M. Top Below
off 3' deep 6-16-78
Cue - Kadinnis
Horse - Mosler

NE