

FILED IN IOWA
 CRAWFORD COUNTY
 2002 FEB -1 AM 9:59
 2002-0466
 INST. NO.
 DENISE MEEVES, RECORDER
 Denise Meeves
 REF # 6.02
 Mary Eiten, Deputy

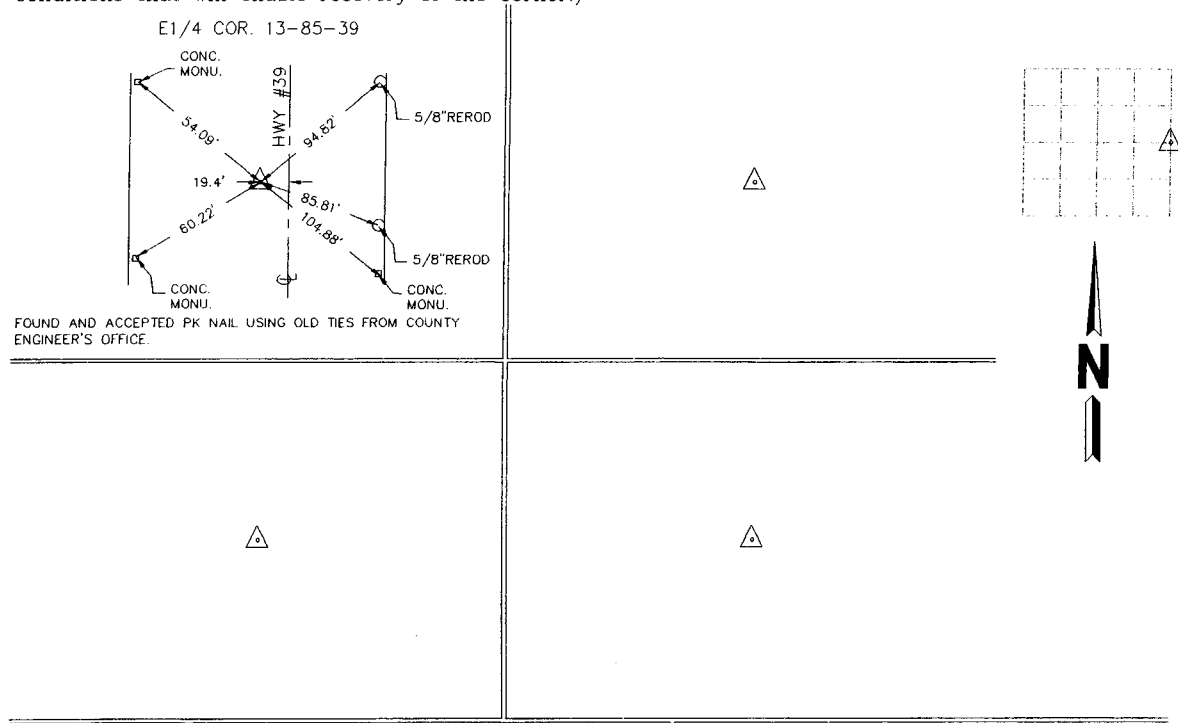
INDEXED
 JDM

WARDER C. HILLHOUSE, JR. MHF ENGINEERING P.C. 300 W. MCKINLEY JEFFERSON, IA. (515)386-4101
UNITED STATES PUBLIC LAND SURVEY CORNER CERTIFICATE OF
 Land Survey Monuments in Section 13, Township 85, Range
39, of the Fifth Principal Meridian, CRAWFORD County, Iowa.
 Previously recorded in _____ in County Recorder's Office.
 (book, page, document number, etc.)

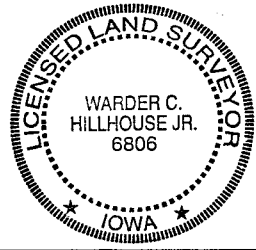
(Show reason for preparing this certificate, the evidence and detailed procedures used in establishing the corner positions and monumentation found or placed.)
 Monument Description and Remarks: CORNERS LOCATED FOR SURVEY WORK IN SECTION.

PLAN - VIEW

(Show a minimum of three reference ties to durable physical objects, relevant monuments and physical conditions that will enable recovery of the corner.)



I hereby certify that land surveying document and the related survey work was performed by me or under my direct personal supervision and that I am a duly licensed land surveyor under the laws of the state of Iowa.
 Signature: Warder C. Hillhouse, Jr.
 Name typed or printed: Warder C. Hillhouse, Jr.
 Date: 1/30/02 Lic. No. 6806
 License Renewal Dec. 31, 2003
 Date Surveyed: 01/02
 Seal



List Corners to be Indexed

Corners	Section	Twp	Range
E1/4 COR.	13	85	39

File No. 02008-1

M.H.F. ENGINEERING, P.C.
 ENGINEERS - LAND SURVEYORS
 Jefferson, Iowa 50129 Ph. (515)386-4101