

INDEXED
FOLLOW UP
INDEXED
SEARCHED

Crawford County Recorder
Denise Neeves
Fee Book 2012-1773
08/09/2012 8:09:55AM
PLC PLAT CORNER CER
Book: Page: # Pages: 1
Total Fees: \$7.00

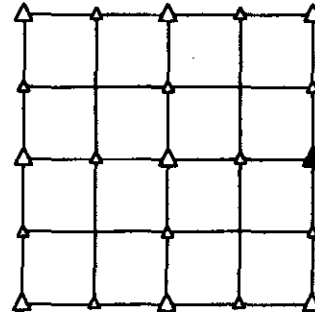
PREPARED BY - JOSEPH P. RUESCHENBERG - SUNDQUIST ENGINEERING - 120 S. MAIN, DENISON, IOWA 51442 - PHONE (712) 263-8118

UNITED STATES PUBLIC LAND SURVEY CORNER CERTIFICATE OF

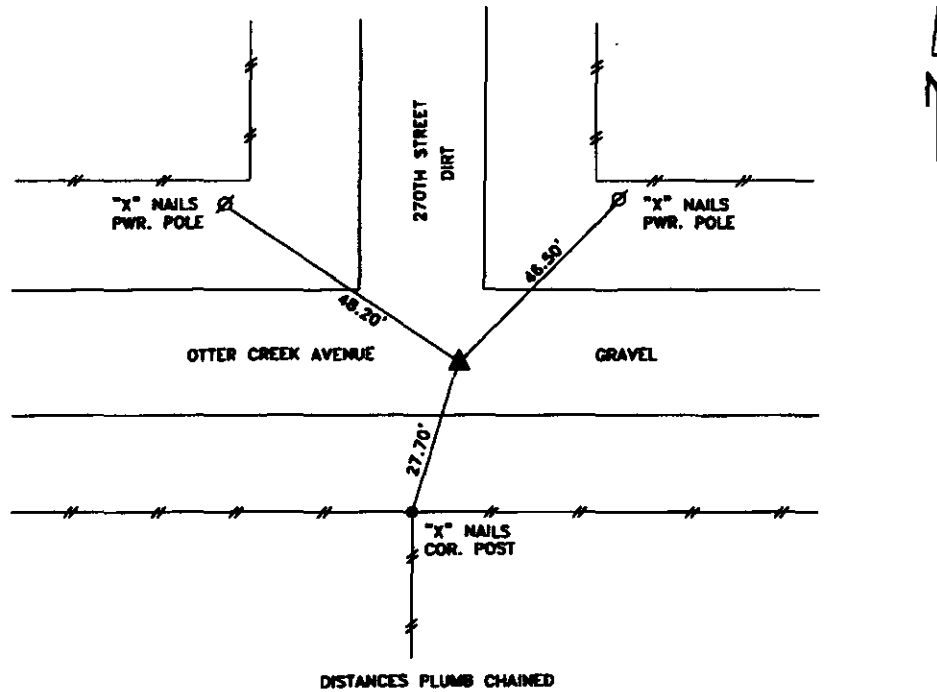
LAND SURVEY MONUMENT SITUATED IN SECTION 14, T 85 N, R 39 W OF
THE 5TH P.M., CRAWFORD COUNTY, IOWA.
PREVIOUSLY RECORDED IN BOOK _____, PAGE _____, OTHER _____

MONUMENT DESCRIPTION AND REMARKS

E1/4 CORNER - FOUND 1/2" DIA. IRON PIN 0.3' DEEP, CORNER IS
4.0' EAST OF FENCE LINE SOUTH.



PLAN VIEW SHOWING RELATIVE LOCATION OF MONUMENT AND REFERENCE POINTS.



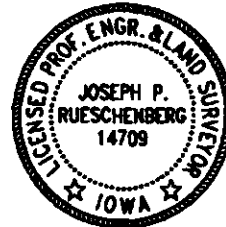
E1/4 CORNER SECTION 14-85-39

I HEREBY CERTIFY THAT THIS LAND SURVEYING DOCUMENT WAS PREPARED
AND THE RELATED SURVEY WORK WAS PERFORMED BY ME OR UNDER MY
DIRECT PERSONAL SUPERVISION AND THAT I AM A DULY LICENSED LAND
SURVEYOR UNDER THE LAWS OF THE STATE OF IOWA.

Joseph P. Rueschenberg 7-20-2012
JOSEPH P. RUESCHENBERG DATE

IA LICENSE NO. 14709

EXP. DATE DECEMBER 31, 2012



SE PROJECT NO. 23012
DRAWN BY: LLL