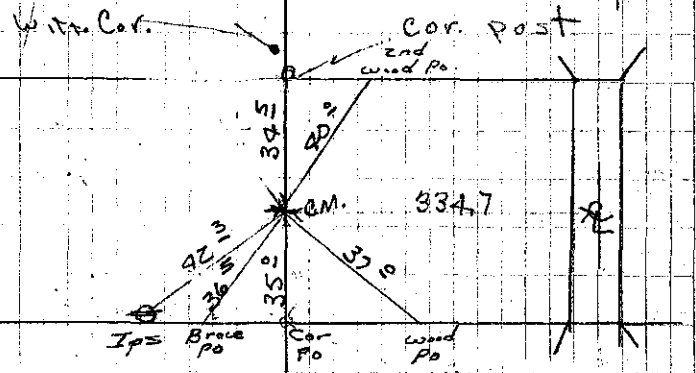


1/4 cor. Sec 13-85-39
 12-4-41 Using Co. Bk 10 - P. 77 as reference.
 Found 1/2" iron witness rod on North
 side of road at specified measurements.
 Did not find wooden stake used as witness
 cor on south side of road. Holding a chain
 over 1/2 mile cor. post on S side of road and
 over witness cor. on N. side, dropped plumb
 bob at 40' south of witness cor.
 Found this point agreed with a specified
 measurement from $\frac{1}{2}$ of cement Culvert.
 Set C.M. at this point
 ties from X-SPKS
 33.9 South of Cor. post
 39.3 SE of tel. pole (#2)
 40.1 NE of power pole
 34.7 N of cor. post
 334.7 W of $\frac{1}{2}$ of cement Culvert

9-7-51



Blustery - Chilly
 Found 1-27-42 Champion
 Set 1-29-42
 Roger-Labohoff-Pelley
 Chert - Champion

Found C.M. "Top Broken
 off" 3" deep 6-16-78
 Cue-Keenies
 Harre-moller

36
 1
 7-6-39 Dug 3'x7'x20 hole
 No find
 ME 14 R 148