

INDEXED \_\_\_\_\_  
 FOLLOW UP ME  
 PROOFED \_\_\_\_\_  
 2001 NO 29 AH11: 26  
 INST. NO. 2001-3432  
 DENISE MEEVES, RECORDER  
*Denise Meeves*  
 FEE #6.00 *Mary Eiten, Deputy*

PREPARED BY: J. SCOTT SHEVEL L.S. KUEHL AND PAYER LTD., 423 WEST MAIN ST., SAC CITY, IA, 50583 PH. (712)662-7859

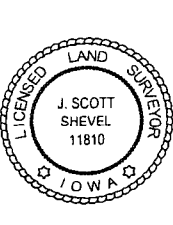
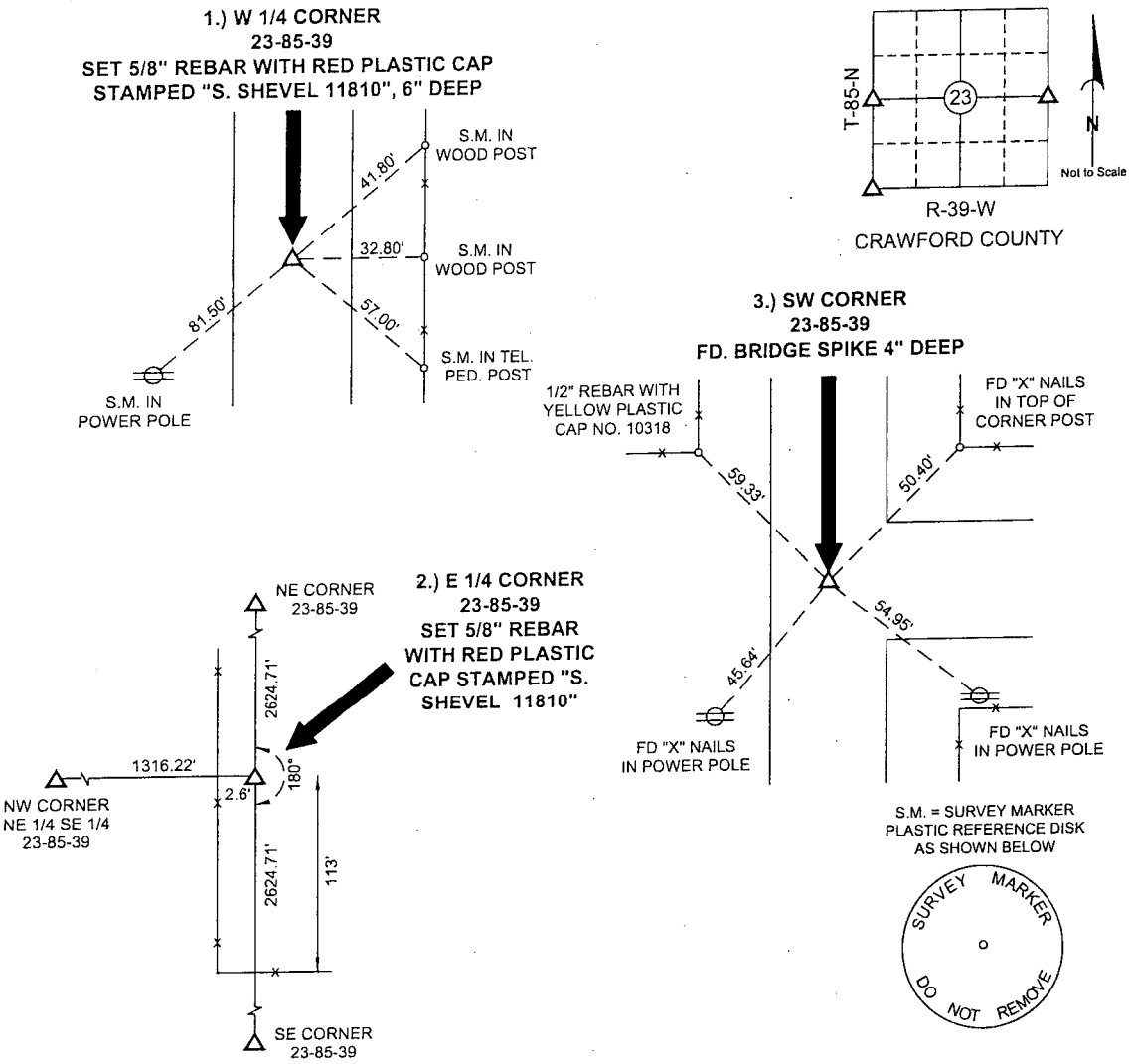
**UNITED STATES PUBLIC LAND SURVEY CORNER CERTIFICATE**  
**OF**

LAND SURVEY MONUMENTS SITUATED IN SECTION 23, TOWNSHIP 85 NORTH,  
 RANGE 39 WEST, OF THE 5TH PRINCIPAL MERIDIAN, CRAWFORD COUNTY, IOWA.  
 PREVIOUSLY RECORDED IN BOOK \_\_\_\_\_ PAGE \_\_\_\_\_

MONUMENT DESCRIPTION AND REMARKS:

- 1.) W 1/4 CORNER 23-85-39: SET 5/8" REBAR WITH RED PLASTIC CAP STAMPED "S. SHEVEL 11810", 6" DEEP, EQUIDISTANT ON A LINE BETWEEN THE NW & SW CORNERS
- 2.) E 1/4 CORNER 23-85-39: SET 5/8" REBAR WITH RED PLASTIC CAP STAMPED "S. SHEVEL 11810", EQUIDISTANT ON A LINE BETWEEN THE NE & SE CORNERS

3.) SW CORNER 23-85-39: FD BRIDGE SPIKE 4" DEEP **PLAN - VIEW**



I hereby certify that this land surveying document was prepared and the related survey work was performed by me or under my direct personal supervision and that I am a duly licensed Land Surveyor under the laws of the State of Iowa.

*J. Scott Shevel* 11/13/01  
 J. Scott Shevel  
 License Number 11810  
 My license renewal date is December 31, 2001  
 Pages covered by this seal 1

Date: \_\_\_\_\_

List Corners to be Indexed

Corners	Section	Township	Range
1) W 1/4	23	85	39
2) E 1/4	23	85	39
3) SW	23	85	39

PN: 010627  
 DRAWN: CDM