

PLAT FILED IN IOWA COUNTY
 2001 NO 29 AM 11:24
 INST NO 2001-3430
 DENISE REEVES, RECORDER
 Denise Reeves
 Fee #609
 Mary Eiten, Deputy

INDEXED
 FOLLOW UP
 PROCEED

PREPARED BY: J. SCOTT SHEVEL L.S. KUEHL AND PAYER LTD., 423 WEST MAIN ST., SAC CITY, IA. 50583 PH. (712)662-7859

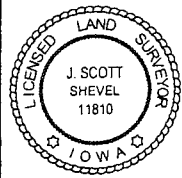
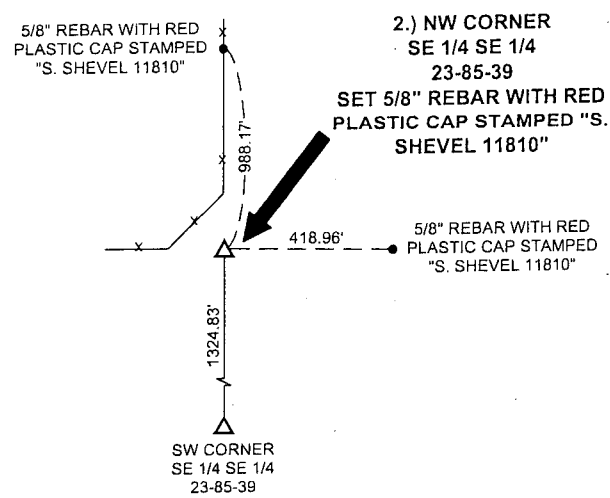
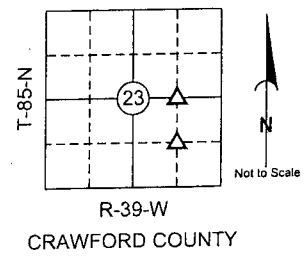
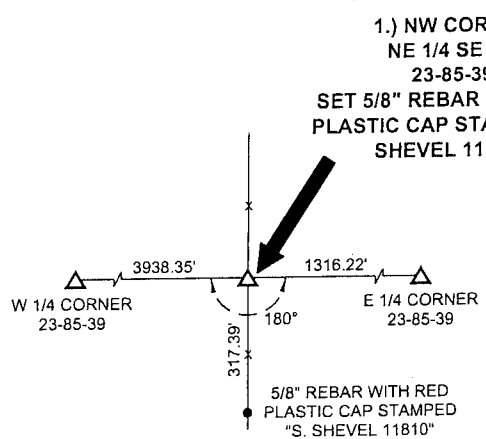
UNITED STATES PUBLIC LAND SURVEY CORNER CERTIFICATE
 OF

LAND SURVEY MONUMENTS SITUATED IN SECTION 23, TOWNSHIP 85 NORTH,
 RANGE 39 WEST, OF THE 5TH PRINCIPAL MERIDIAN, CRAWFORD COUNTY, IOWA.
 PREVIOUSLY RECORDED IN BOOK _____ PAGE _____

MONUMENT DESCRIPTION AND REMARKS:

- 1.) NW CORNER NE 1/4 SE 1/4 23-85-39: SET 5/8" REBAR WITH RED PLASTIC CAP STAMPED "S. SHEVEL 11810", EQUIDISTANT ON A LINE BETWEEN THE CENTER OF SECTION AND E 1/4 CORNER
- 2.) NW CORNER SE 1/4 SE 1/4 23-85-39: SET 5/8" REBAR WITH RED PLASTIC CAP STAMPED "S. SHEVEL 11810" AT INTERSECTION OF FENCES

PLAN - VIEW



I hereby certify that this land surveying document was prepared and the related survey work was performed by me or under my direct personal supervision and that I am a duly licensed Land Surveyor under the laws of the State of Iowa.

J. Scott Shevel 11/13/01
 J. Scott Shevel Date:
 License Number 11810
 My license renewal date is December 31, 2001
 Pages covered by this seal 1

List Corners to be Indexed

Corners	Section	Township	Range
1) NW NE 1/4 SE 1/4	23	85	39
2) NW SE 1/4 SE 1/4	23	85	39

PN: 010627
 DRAWN: JMK