

COPY

Crawford County Recorder
Denise Meeves
Fee Book 2009-2226
08/20/2009 @02:45PM
PLC PLAT CORNER CER # Pages: 1
Book: Page: \$9.00
Total Fees:

INDEXED W&M
FOLLOW UP W&M
PROOFED _____
SCANNED _____

PREPARED BY - TERENCE E. CRAWFORD - SUNDQUIST ENGINEERING - 120 S. MAIN, DENISON, IOWA 51442 - PHONE (712) 263-8118

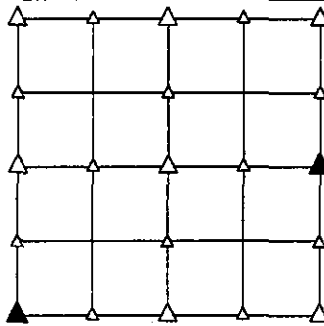
UNITED STATES PUBLIC LAND SURVEY CORNER CERTIFICATE
OF

LAND SURVEY MONUMENT SITUATED IN SECTION 23, T 85 N, R 39 W OF
THE 5TH P.M., CRAWFORD COUNTY, IOWA.
PREVIOUSLY RECORDED IN BOOK _____, PAGE _____, OTHER 2001-3432

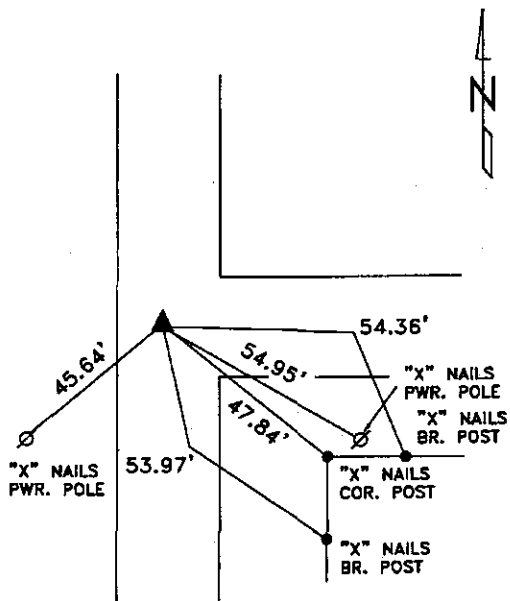
MONUMENT DESCRIPTION AND REMARKS

SW CORNER - FOUND BRIDGE SPIKE 4" DEEP.

E1/4 CORNER - FOUND IRON PIN W/RED CAP #11810 1.0' DEEP
W/SMALL RED STEEL POST NEXT TO PIN.

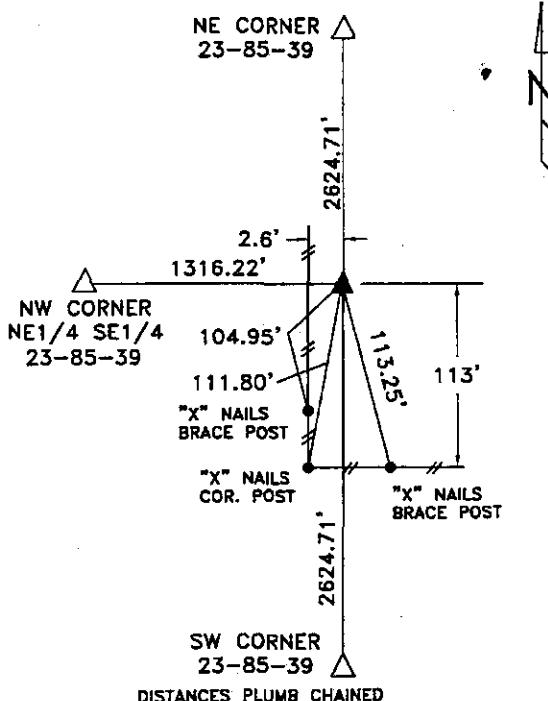


PLAN VIEW SHOWING RELATIVE LOCATION OF MONUMENT AND REFERENCE POINTS.



DISTANCES PLUMB CHAINED

SW CORNER SECTION 23-85-39



DISTANCES PLUMB CHAINED

E1/4 CORNER SECTION 23-85-39

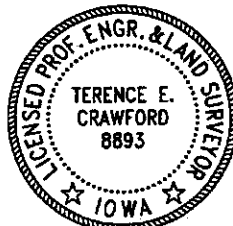
I HEREBY CERTIFY THAT THIS LAND SURVEYING DOCUMENT WAS PREPARED AND THE RELATED SURVEY WORK WAS PERFORMED BY ME OR UNDER MY DIRECT PERSONAL SUPERVISION AND THAT I AM A DULY LICENSED LAND SURVEYOR UNDER THE LAWS OF THE STATE OF IOWA.

Terence E. Crawford

AUG 12 2009

TERENCE E. CRAWFORD
IA LICENSE NO. 8893

DATE
EXP. DATE DECEMBER 31, 2009



SE PROJECT NO. 22209
DRAWN BY: LLL