

INDEX _____
 SCAN _____
 FOLLOW UP _____
 PROOF _____

Instrument #: 2022-1178
 05/05/2022 01:10:10 PM Total Pages: 1
 PLC PLAT COR CERT
 Recording Fee: \$0.00 Transfer Tax: \$0
 Denise Meeves, Recorder, Crawford County Iowa



PREPARED BY: PAUL ASSMAN-CRAWFORD COUNTY ENGINEER'S OFFICE-COURTHOUSE-DENISON, IA.-712-263-2449

UNITED STATES PUBLIC LAND SURVEY CORNER CERTIFICATE
 OF

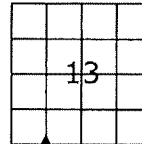
LAND SURVEY MONUMENT SITUATED IN OTTER CREEK TOWNSHIP, SW CORNER SE 1/4 SW 1/4 OF SECTION 13,
 T-85N, R-39W OF THE FIFTH P.M. CRAWFORD COUNTY, IOWA.

PREVIOUSLY RECORDED AS NO. 2020-0409

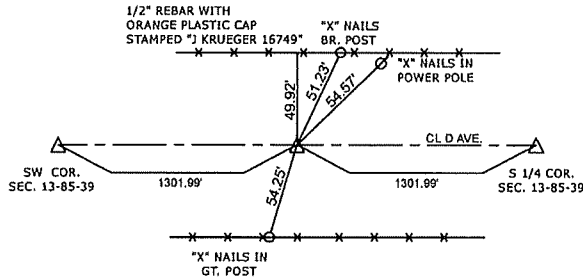
MONUMENT DESCRIPTION AND REMARKS

SW CORNER SE 1/4 SW 1/4 SEC. 13-85-39

CORNER WAS SET AFTER COUNTY SURVEYED FOR
 RESURFACING PROJECT. COUNTY RESURFACED ROAD AND
 SET 1/2" X 4" CARRIAGE BOLT 1/4" BELOW SURFACE
 ONLINE AND EQUADISTANT TO SW CORNER AND S 1/4
 CORNER AS INDICATED ON PREVIOUS CERTIFICATE#
 2020-0409 AND RETIED



SW CORNER SE 1/4 SW 1/4 SEC. 13-85-39



ALL TIE DISTANCES ARE MEASURED HORIZONTALLY USING GPS

CERTIFICATION:

I HEREBY CERTIFY THAT THIS LAND SURVEYING DOCUMENT WAS PREPARED AND THE RELATED SURVEY WORK WAS PERFORMED BY ME OR UNDER MY DIRECT PERSONAL SUPERVISION AND THAT I AM A DULY LICENSED LAND SURVEYOR UNDER THE LAWS OF THE STATE OF IOWA.

Paul J. Assman
 Signature

5/4/22
 Date of Survey

PAUL J. ASSMAN
 Typed Name

11982
 L.S. No.

12-31-22
 License Renewal Date

Pages covered by this seal 1

