

INDEXED
 FILED
 RECORDED
 2007
 AUG
 2

PREPARED BY AND RETURN TO: JEFFREY M. KRUEGER P.L.S., KUEHL AND PAYER LTD., 2002 WEST MAIN ST., SAC CITY, IA 50583 PH. (712)662-7859

**UNITED STATES PUBLIC LAND SURVEY CORNER CERTIFICATE
 OF**

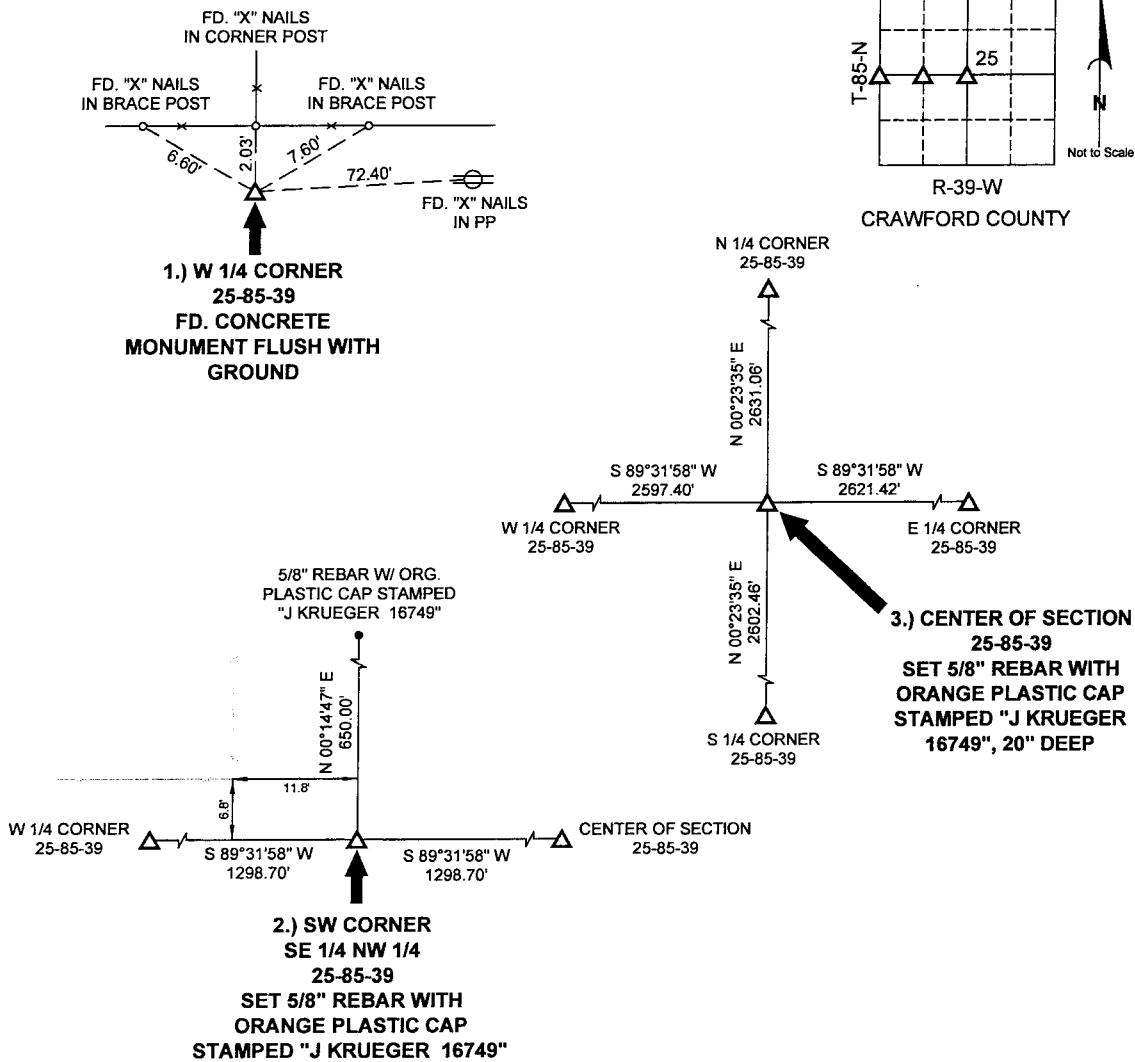
LAND SURVEY MONUMENTS SITUATED IN SECTION 25, TOWNSHIP 85 NORTH,
 RANGE 39 WEST, OF THE 5TH PRINCIPAL MERIDIAN, CRAWFORD COUNTY, IOWA.

PREVIOUSLY RECORDED IN BOOK _____ PAGE _____

MONUMENT DESCRIPTION AND REMARKS:

- 1.) W 1/4 CORNER 25-85-39: FD. CONCRETE MONUMENT FLUSH WITH GROUND
- 2.) SW CORNER SE 1/4 NW 1/4 25-85-39: SET 5/8" REBAR WITH ORANGE PLASTIC CAP STAMPED "J KRUEGER 16749", EQUIDISTANT & ON LINE BETWEEN THE W 1/4 CORNER & CENTER OF SECTION
- 3.) CENTER OF SECTION 25-85-39: SET 5/8" REBAR WITH ORANGE PLASTIC CAP STAMPED "J KRUEGER 16749", 20" DEEP, AT THEORETICAL POSITION PER B.L.M. METHODS

PLAN - VIEW



I hereby certify that this land surveying document was prepared and the related survey work was performed by me or under my direct personal supervision and that I am a duly licensed Land Surveyor under the laws of the State of Iowa.

Jeffrey M. Krueger
 Jeffrey M. Krueger
 License Number 16749
 My license renewal date is December 31, 2008
 Pages covered by this fee: 1

Date: 6-29-2007

List Corners to be Indexed

| Corners | Section | Township | Range |
|----------------------------|---------|----------|-------|
| 1) W 1/4 | 25 | 85 | 39 |
| 2) SW CORNER SE 1/4 NW 1/4 | 25 | 85 | 39 |
| 3) CENTER | 25 | 85 | 39 |

PN: 070546
 DRAWN: JMK