

PREPARED BY AND RETURN TO: JEFFREY M. KRUEGER P.L.S., KUEHL AND PAYER LTD., 2002 WEST MAIN ST., SAC CITY, IA 50583 PH. (712)662-7859

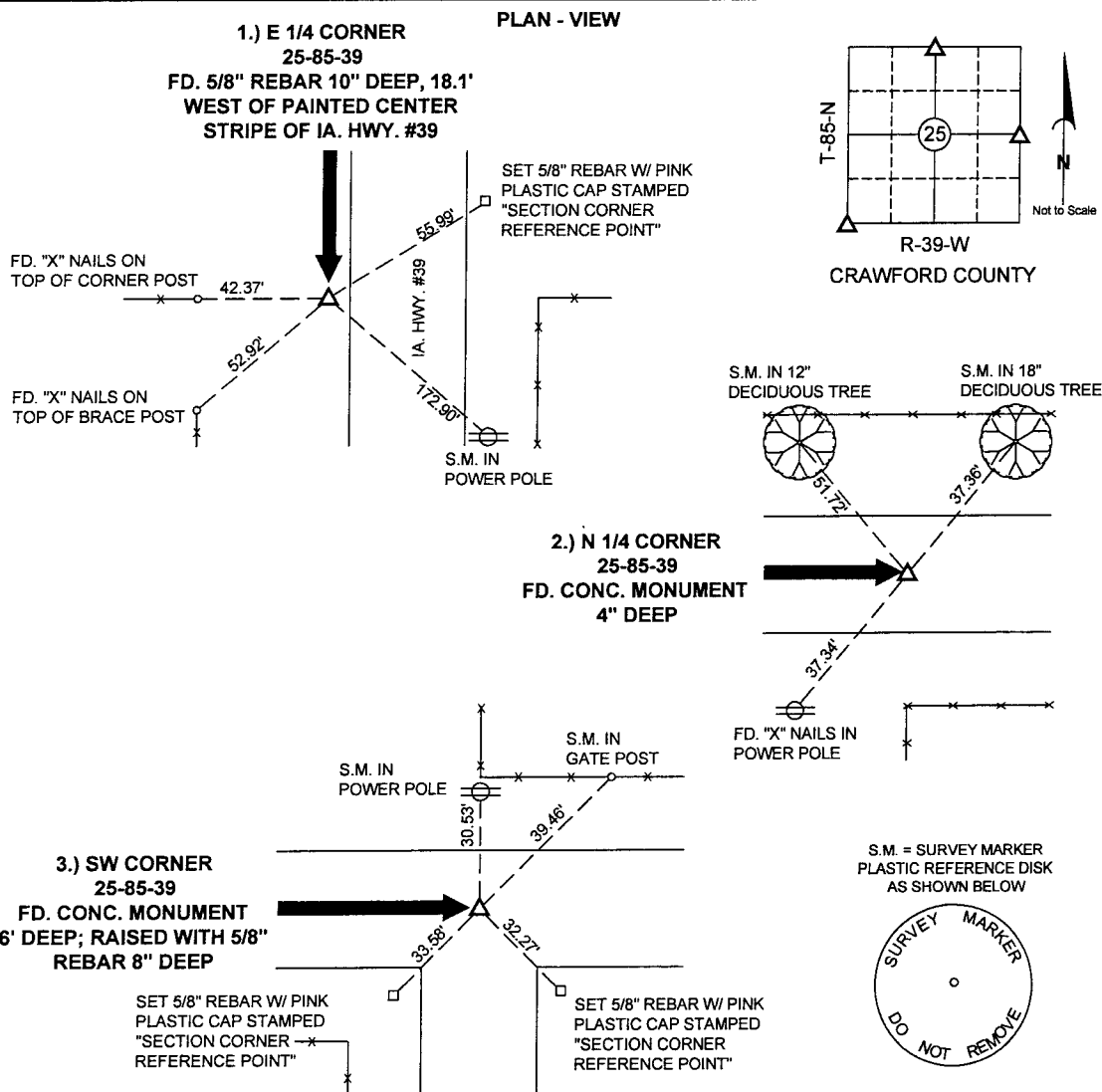
# UNITED STATES PUBLIC LAND SURVEY CORNER CERTIFICATE OF

LAND SURVEY MONUMENTS SITUATED IN SECTION 25, TOWNSHIP 85 NORTH,  
RANGE 39 WEST, OF THE 5TH PRINCIPAL MERIDIAN, CRAWFORD COUNTY, IOWA.

PREVIOUSLY RECORDED IN BOOK \_\_\_\_\_ PAGE \_\_\_\_\_

MONUMENT DESCRIPTION AND REMARKS:

- 1.) E 1/4 CORNER 25-85-39: FD. 5/8" REBAR, 10" DEEP, 18.1' WEST OF PAINTED CENTER STRIPE OF IA. HWY. #39
- 2.) N 1/4 CORNER 25-85-39: FD. CONC. MONUMENT 4" DEEP
- 3.) SW CORNER 25-85-39: FD. CONC. MONUMENT 6" DEEP; RAISED WITH 5/8" REBAR 8" DEEP



I hereby certify that this land surveying document was prepared and the related survey work was performed by me or under my direct personal supervision and that I am a duly licensed Land Surveyor under the laws of the State of Iowa.

Jeffrey M. Krueger  
License Number: 16749  
My license renewal date is December 31, 2008  
Pages covered by this seal 1

6-29-2007

Date:

## List Corners to be Indexed

Corners	Section	Township	Range
1) E 1/4	25	85	39
2) N 1/4	25	85	39
3) SW	25	85	39

PN: 070546  
DRAWN: JMM