

PREPARED BY: J. SCOTT SHEVEL L.S. KUEHL AND PAYER LTD., 423 WEST MAIN ST., SAC CITY, IA. 50583 PH. (712)662-7859

UNITED STATES PUBLIC LAND SURVEY CORNER CERTIFICATE
OF

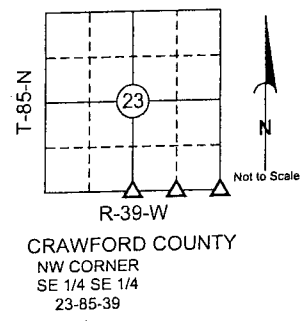
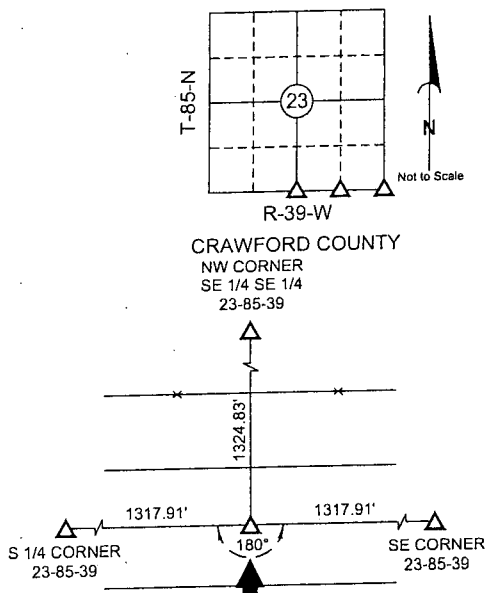
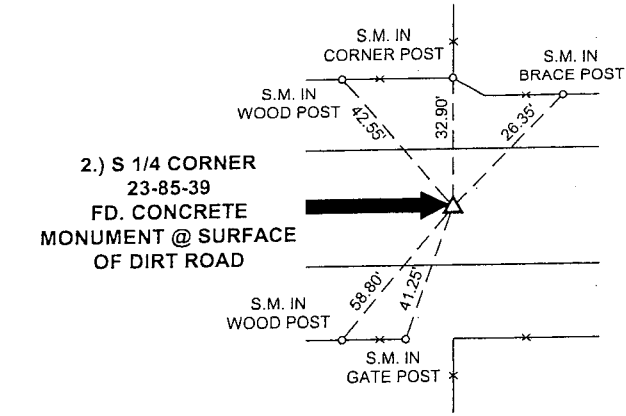
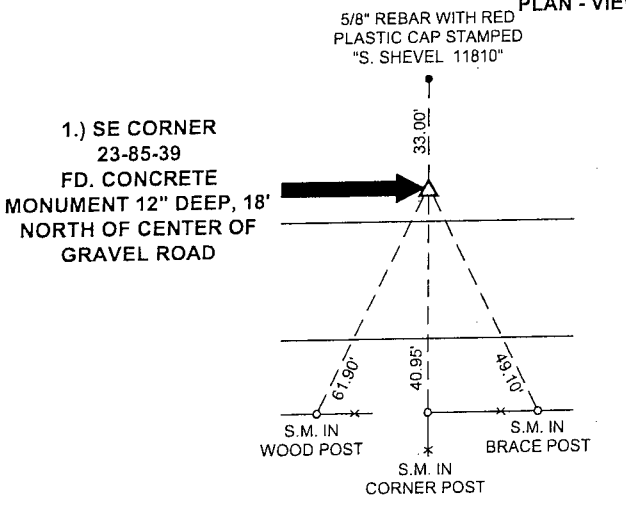
LAND SURVEY MONUMENTS SITUATED IN SECTION 23, TOWNSHIP 85 NORTH,
RANGE 39 WEST, OF THE 5TH PRINCIPAL MERIDIAN, CRAWFORD COUNTY, IOWA.

PREVIOUSLY RECORDED IN BOOK _____ PAGE _____

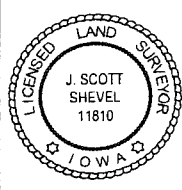
MONUMENT DESCRIPTION AND REMARKS:

- 1.) SE CORNER 23-85-39: FD CONCRETE MONUMENT, 12" DEEP, 18" NORTH OF CENTER GRAVEL ROAD
- 2.) S 1/4 CORNER 23-85-39: FD CONCRETE MONUMENT @ SURFACE OF DIRT ROAD
- 3.) SW CORNER SE 1/4 SE 1/4 23-85-39: SET 5/8" REBAR WITH RED PLASTIC CAP STAMPED "S. SHEVEL 11810", 6" DEEP, EQUIDISTANT ON A LINE BETWEEN THE S 1/4 CORNER & SE CORNER

PLAN - VIEW



S.M. = SURVEY MARKER
PLASTIC REFERENCE DISK
AS SHOWN BELOW



I hereby certify that this land surveying document was prepared and the related survey work was performed by me or under my direct personal supervision and that I am a duly licensed Land Surveyor under the laws of the State of Iowa.

J. Scott Shevel 11/13/01
Date: _____

J. Scott Shevel
License Number 11810
My license renewal date is December 31, 2001
Pages covered by this seal 1

List Corners to be Indexed

Corners	Section	Township	Range
1) SE	23	85	39
2) S 1/4	23	85	39
3) SW SE 1/4 SE 1/4	23	85	39