

2001 NOV 20 AM 11:36  
 2001-3342  
 DENISE MEEVES, RECORDER  
 Denise Meeves  
 FEE \$ 6.00

INDEXED  
 FOLLOW UP  
 FILED

WARDER C. HILLHOUSE, JR. MHF ENGINEERING P.C. 300 W. MCKINLEY JEFFERSON, IA. (515)386-4101

**UNITED STATES PUBLIC LAND SURVEY CORNER CERTIFICATE OF**

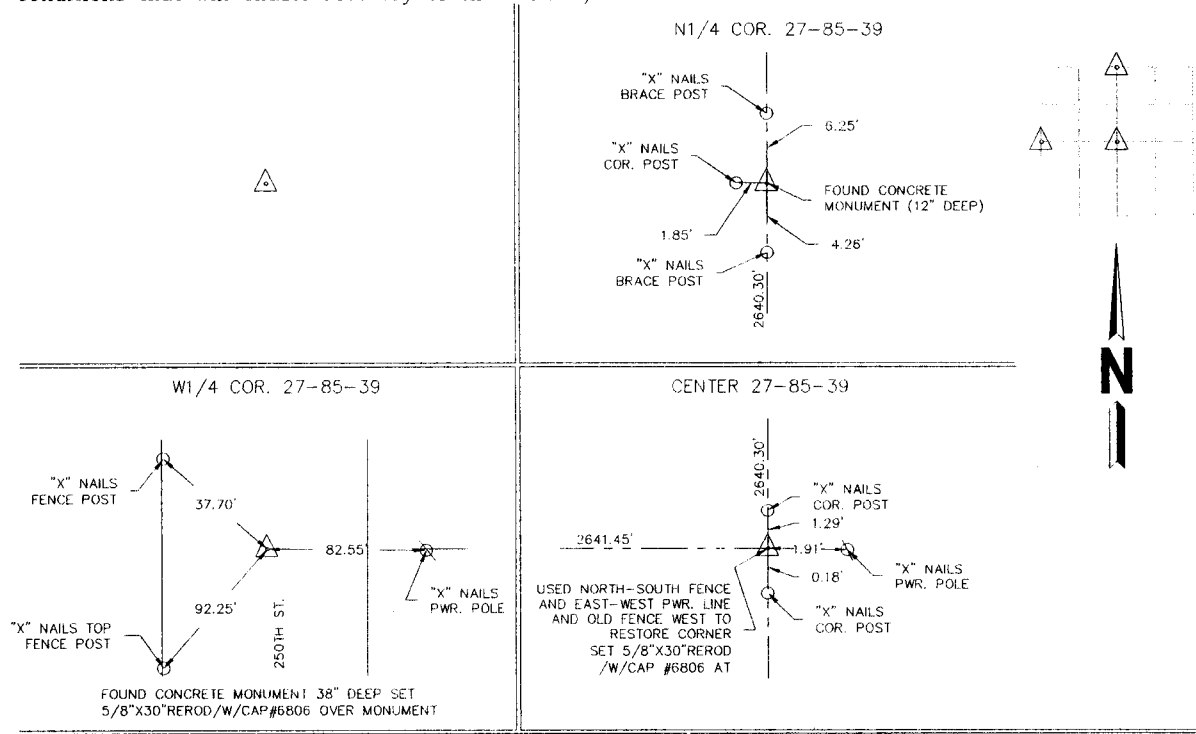
Land Survey Monuments in Section 27, Township 85, Range 39, of the Fifth Principal Meridian, CRAWFORD County, Iowa. Previously recorded in \_\_\_\_\_ in County Recorder's Office.

(Show reason for preparing this certificate, the evidence and detailed procedures used in establishing the corner positions and monumentation found or placed.)

Monument Description and Remarks: \_\_\_\_\_  
 \_\_\_\_\_  
 \_\_\_\_\_

**PLAN - VIEW**

(Show a minimum of three reference ties to durable physical objects, relevant monuments and physical conditions that will enable recovery of the corner.)



I hereby certify that land surveying document and the related survey work was performed by me or under my direct personal supervision and that I am a duly licensed land surveyor under the laws of the state of Iowa.

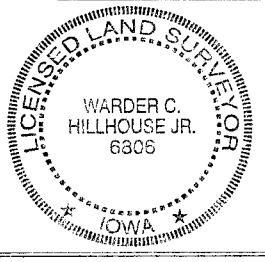
Signature: Warder C. Hillhouse, Jr.  
 Name typed or printed: Warder C. Hillhouse, Jr.

Date: 11/16/01 Lic. No. 6806

License Renewal Dec. 31, 2001

Date Surveyed: 11/01

Seal



List Corners to be Indexed

Corners	Section	Twp	Range
N1/4 COR.	27	85	39
W1/4 COR.	27	85	39
CENTER	27	85	39

File No. 01214-1

**M.H.F. ENGINEERING, P.C.**  
 ENGINEERS - LAND SURVEYORS  
 Jefferson, Iowa 50129 Ph. (515)386-4101