

UNITED STATES PUBLIC LAND SURVEY CORNER CERTIFICATE

Prepared by & Return to: Joseph A. Snethen, P.L.S.
 PH: 641-847-3273 Clopsaddle-Garber Associates, Inc.
 FAX: 641-847-2303 739 Park Ave., Ackley, IA, 50601

INDEXED sm
 FOLLOW UP _____
 PROOFED _____
 SCANNED _____

Corners to be Indexed
 Corners Section Township Range
 SE Corner 22 T85N R39W



Instrument #: 2019-0892
 05/21/2019 02:55:56 PM Total Pages: 1
 PLC PLAT COR CERT
 Recording Fee: \$7.00 Transfer Tax: \$0
 Denise Meeves, Recorder, Crawford County Iowa

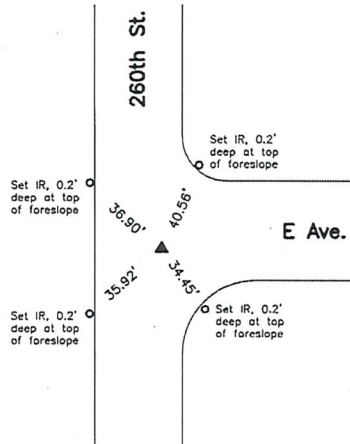


Land Survey Monuments situated in Section 22, Township 85 North, Range 39 West of the Fifth Principal Meridian, Crawford County, Iowa, Previously recorded in (see below) in County Recorder's Office.

SE Corner - Fee Book 2009-2226

This corner was used for a survey in this section for Denco-B, LTD. Basis of bearing for this corner certificate can be found on the associated plot of survey filed in the County Recorder's Office for this section.

SE Corner



Corner Recovery =

Searched area with metal detector, excavated 2.3'± x 4.6'± deep hole at magnetic reading and found 1/2"Ø x 0.7' iron bridge spike matching certificates of record, 0.2' deep. Tied out and removed spike, searched area again with metal detector and found 1/2"Ø x 2.0' long iron bolt with a 3/4" square head threaded on bottom at 1.2'± deep with wood remnants around. Tied out and removed bolt, but was unable to probe concrete monument beneath it. Continued excavation to 2.5'± deep, searched hole with metal detector, excavated at faint reading and found 4" x 4 concrete monument with brass cap, 4.5' deep at 5.5'± East of apparent centerline of traveled surface of gravel road North-South and 7.5'± South of apparent centerline of traveled surface of gravel road East. Concrete monument is the older and deeper monument of record. Therefore, placed orange plastic cased magnet on north side of monument below top for locating purposes only, set 3/4"Ø x 4.0' aluminum capped iron rod (#23133), 0.5' deep on center of brass cap and used rered as the correct corner. All ties are plumb distance unless indicated otherwise.

Note: Location of spike was N55°55'30"W 1.32' from that of concrete monument.
 Location of bolt was N61°41'05"W 1.35' from that of concrete monument.

This certificate is being prepared because there is a change to monumentation of record and a position different than that of record was accepted.



I hereby certify that this land surveying document was prepared and the related surveying work was performed by me or under my direct personal supervision and that I am a duly licensed Professional Land Surveyor under the laws of the State of Iowa.

Joseph A. Snethen
 JOSEPH A. SNETHEN, PLS
 Date: 5.30.2019 License number: 23133
 My license renewal date is December 31, 2020
 Pages or sheets covered by this seal: 1

Legend

IR = 1/2"Ø x 2.0' Iron Rod

