

INDEX
 SCAN
 FOLLOW UP
 PROOF

Instrument #: 2023-2144
 12/08/2023 09:48:16 AM Total Pages: 1
 PLC PLAT COR CERT
 Recording Fee: \$7.00 Transfer Tax: \$0
 Sara Mesecik, Recorder, Crawford County Iowa



PREPARED BY - TERENCE E. CRAWFORD - SUNDQUIST ENGINEERING - 120 S. MAIN, DENISON, IOWA 51442 - PHONE (712) 263-8118

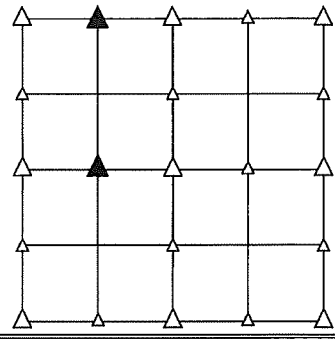
UNITED STATES PUBLIC LAND SURVEY CORNER CERTIFICATE
 OF

LAND SURVEY MONUMENT SITUATED IN SECTION 32, T 85 N, R 39 W OF
 THE 5TH P.M., CRAWFORD COUNTY, IOWA.
 PREVIOUSLY RECORDED IN BOOK , PAGE , OTHER

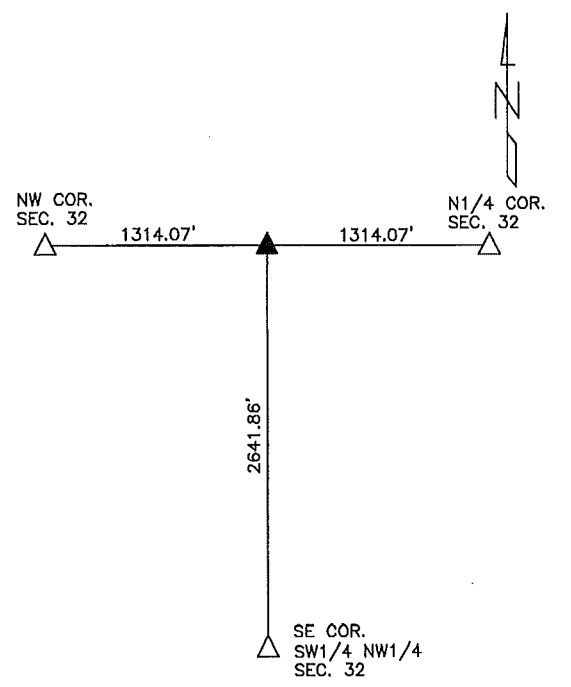
MONUMENT DESCRIPTION AND REMARKS

NE CORNER
 NW1/4 NW1/4 - SET 5/8" DIA. X 18" IRON PIN W/YELLOW CAP
 #8893 0.5' DEEP. SET ON LINE AND AT SPLIT
 BETWEEN NW COR. & N1/4 COR. OF SEC. 32.

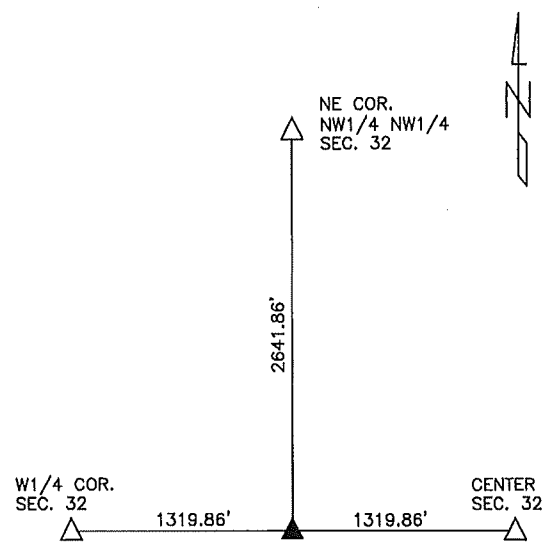
SE CORNER
 SW1/4 NW1/4 - SET 5/8" DIA. X 18" IRON PIN W/YELLOW CAP
 #8893 0.5' DEEP. SET ON LINE AND AT SPLIT
 BETWEEN W1/4 COR. & CENTER OF SEC. 32.



PLAN VIEW SHOWING RELATIVE LOCATION OF MONUMENT AND REFERENCE POINTS.



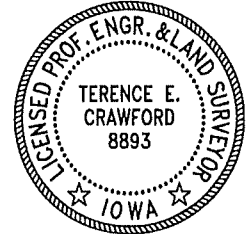
DISTANCES PLUMB CHAINED
 NE CORNER NW1/4 NW1/4
 SECTION 32-85-39



DISTANCES PLUMB CHAINED
 SE CORNER SW1/4 NW1/4
 SECTION 32-85-39

I HEREBY CERTIFY THAT THIS LAND SURVEYING DOCUMENT WAS PREPARED AND THE RELATED SURVEY WORK WAS PERFORMED BY ME OR UNDER MY DIRECT PERSONAL SUPERVISION AND THAT I AM A DULY LICENSED LAND SURVEYOR UNDER THE LAWS OF THE STATE OF IOWA.

Terence E. Crawford 12-1-23
 TERENCE E. CRAWFORD DATE
 IA LICENSE NO. 8893 EXP. DATE DECEMBER 31, 2023



SE PROJECT NO. 25923
 DRAWN BY: LLL