

Crawford County Recorder
 Denise Meeves
Fee Book 2012-2545
 10/31/2012 @ 11:11AM
 PLC PLAT CORNER CER
 Book: Page: # Pages: 1
 Total Fees: \$7.00

WILKE LAND SURVEYING INC. 401 1800th Street Potosi, Iowa 51582 (712)489-2888

UNITED STATES PUBLIC LAND SURVEY CORNER CERTIFICATE

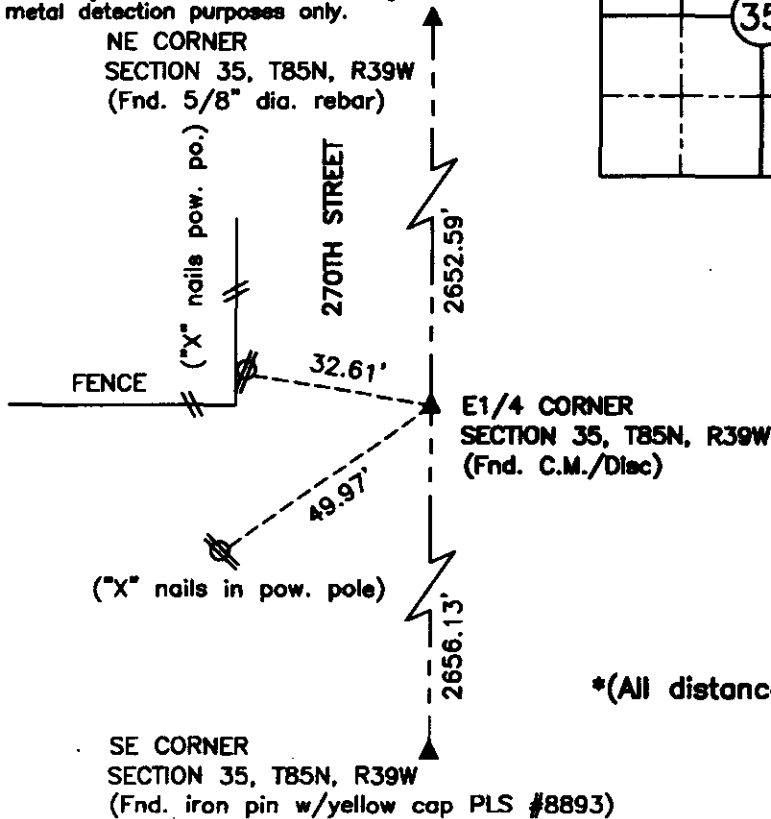
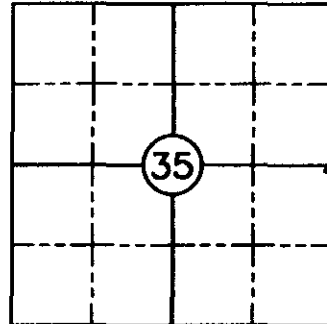
SECTION 35 TOWNSHIP 85N RANGE 39W COUNTY CRAWFORD

Reason for Certificate: (No record Certificate)

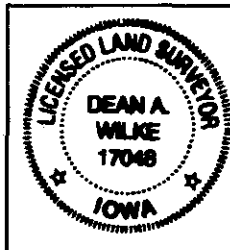
Monument Description and Remarks:

E1/4 Corner - Found concrete monument with brass disc 1.8" deep by digging and probing in line with fence West and using an old tie distance to the existing old house to the Southwest. Set 5/8" dia. rebars along the North and South edges of the C.M. for metal detection purposes only.

NE CORNER
 SECTION 35, T85N, R39W
 (Fnd. 5/8" dia. rebar)



List Corners to be Indexed			
Corner	Section	Twp.	Range
E1/4 COR.	35	85N	39W



I hereby certify that this land surveying document was prepared and the related survey work was performed by me or under my direct personal supervision and that I am a duly Licensed Land Surveyor under the laws of the State of Iowa.

Dean A. Wilke 10/29/12
 Dean A. Wilke Date

License number 17048
 My license renewal date is December 31, 2013
 Pages or sheets covered by this seal: This page only