

2002 JUN -4 PM 1:58  
 2002-1953  
 DENISE MEWES  
 REC'D

PREPARED BY - TERENCE E. CRAWFORD - SUNDUQUIST ENGINEERING - 120 S. MAIN, DENISON, IOWA 51442 - PHONE (712)263-8118

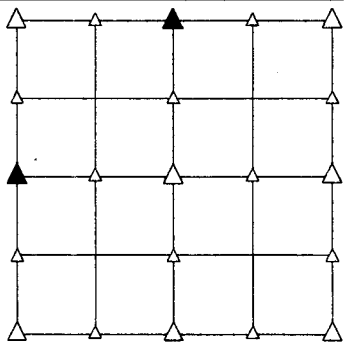
## UNITED STATES PUBLIC LAND SURVEY CORNER CERTIFICATE OF

LAND SURVEY MONUMENT SITUATED IN SECTION 35, T 85 N, R 39 W OF  
 THE 5TH P.M., CRAWFORD COUNTY, IOWA.  
 PREVIOUSLY RECORDED IN BOOK \_\_\_\_\_, PAGE \_\_\_\_\_, OTHER \_\_\_\_\_

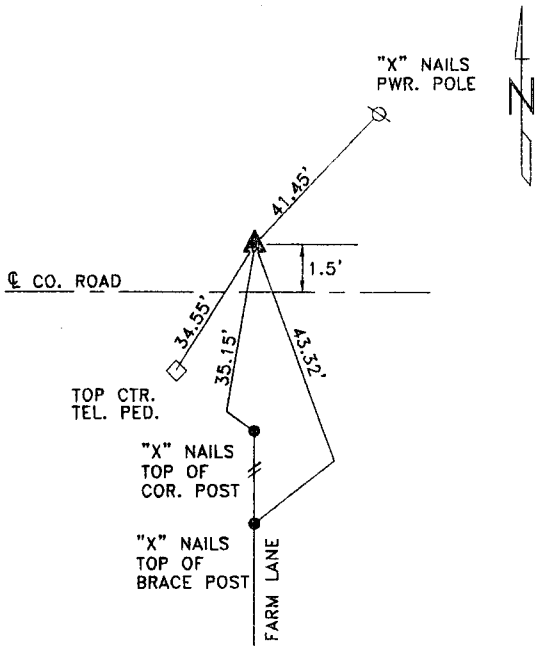
### MONUMENT DESCRIPTION AND REMARKS

N1/4 CORNER - FOUND CONCRETE MONUMENT 2.20' DEEP,  
 RAISED W/5/8" DIA. X 18" IRON PIN  
 W/YELLOW CAP #8893, NOW 0.70' DEEP.

W1/4 CORNER - FOUND ROTTEN WOOD STAKE 2.0' DEEP,  
 ROUND CONCRETE MONUMENT 4.50' DEEP  
 PLACED ROTTEN STAKE BACK IN HOLE. SET  
 5/8" DIA. X 18" IRON PIN W/YELLOW  
 CAP #8893 OVER C.M., 6" DEEP.

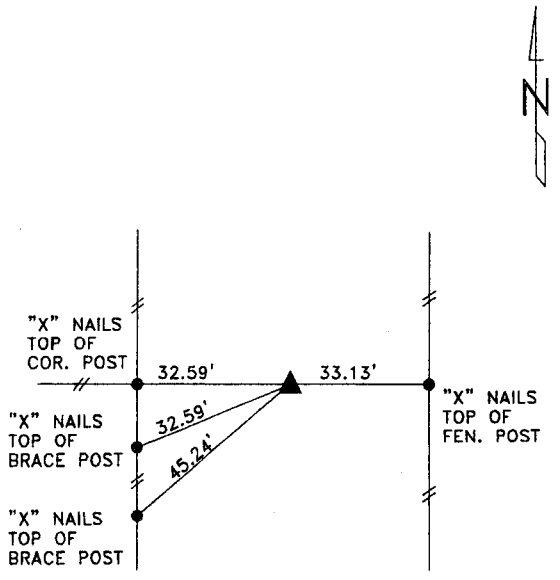


### PLAN VIEW SHOWING RELATIVE LOCATION OF MONUMENT AND REFERENCE POINTS.



DISTANCES SLOPE CHAINED

N1/4 CORNER SECTION 35-85-39



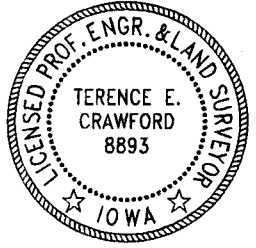
DISTANCES SLOPE CHAINED

W1/4 CORNER SECTION 35-85-39

HEREBY CERTIFY THAT THIS LAND SURVEYING DOCUMENT WAS PREPARED  
 AND THE RELATED SURVEY WORK WAS PERFORMED BY ME OR UNDER  
 MY DIRECT SUPERVISION AND THAT I AM A DULY LICENSED LAND  
 SURVEYOR UNDER THE LAWS OF THE STATE OF IOWA.

*Terence E. Crawford*  
 TERENCE E. CRAWFORD  
 IOWA LICENSE NO. 8893

MAY 29 2002  
 DATE  
 EXP. DATE DECEMBER 31, 2003



PROJECT NO. 26802  
 DRAWN BY: LMD