

Crawford County Recorder
Denise Meeves
Fee Book 2009-0252
02/04/2009 @10:13AM
PLC PLAT CORNER CER
Book: Page: # Pages: 1
Total Fees: \$7.00

INDEXED
FILED
SEARCHED

COPY

PREPARED BY - JAMES C. SAILER - 1907, P.O.B. 987, SIOUX CITY IOWA 51102-0987 PHONE (712) 276-1451



UNITED STATES PUBLIC LAND SURVEY CORNER CERTIFICATE
OF

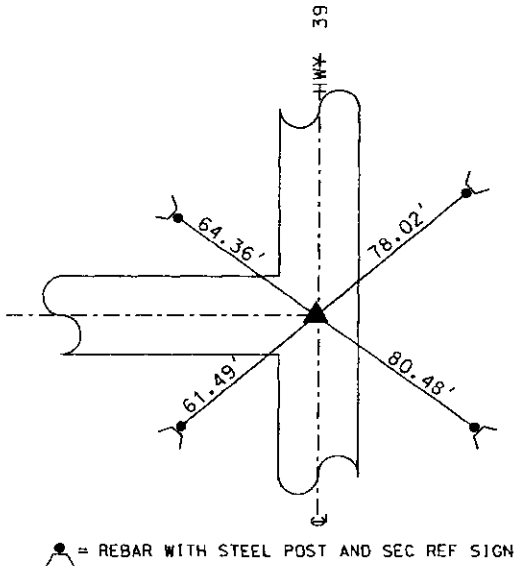


Land Survey Monuments Situated in Section 36 ,
Township 85 N, Range 39 W, Of The Fifth Principal Meridian,
CRAWFORD County, Iowa. Previously Recorded In _____
In The County Recorders Office.

Monument Description and Remarks:

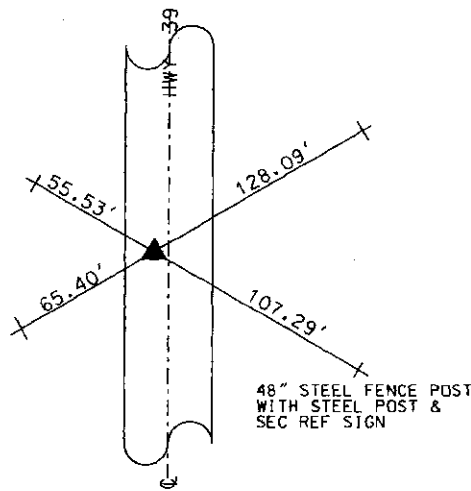
- ① FOUND A LEAD PLUG IN CONCRETE UNDER AN ASPHALT OVERLAY. SET BRASS PLUG IN THE ASPHALT OVER TOP OF THE LEAD PLUG
- ② FOUND A PK NAIL IN THE ASPHALT. FOUND A LEAD PLUG IN THE CONCRETE BELOW. SET A BRASS PLUG IN THE ASPHALT OVER TOP OF THE LEAD PLUG. PK NAIL WAS 0.48' EAST OF THE LEAD PLUG

① SOUTHEAST CORNER PLAN - VIEW
SEC. 36-85-39



● = REBAR WITH STEEL POST AND SEC REF SIGN
CORNER IS 1.90' WEST OF CENTERLINE
PK NAIL AT PC OF CURVE IS 1.90' EAST
AND 1.17' NORTH OF THE CORNER

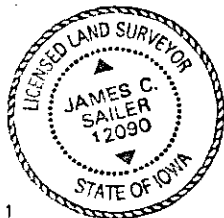
② EAST 1/4 CORNER
SEC. 36-85-39



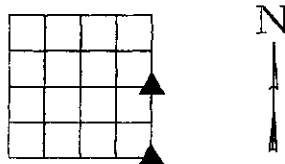
CORNER IS 5.29' WEST OF CENTERLINE

I hereby certify that this land surveying document was prepared and the related survey work was performed by me or under my direct personal supervision and that I am a duly licensed Land Surveyor under the laws of the State of Iowa.

Signature: James C. Sailer 2/2/09
JAMES C. SAILER Lisc. No: 12090 Date



My License Renewal
Date is December 31, 2010
Pages or sheets covered by this seal: 1



Corner to be Indexed

Corner	Section	Twp	Range
E1/4	36	85	39
SE	36	85	39